



WEST KENT WI NEWS

May 2024



VIEW FROM THE CHAIR



It seems strange to be writing about an event that happened at the end of March knowing that you will all be reading this in May but I hope you will humour me!

The build up to any large event is always a bit traumatic – collecting everything that we need from Ethel Hunt Lodge, making sure the timings are right and checking in on the speakers are just a few of the things on our minds! However, I think it's fair to say the day went really well! From my point of view, we kept to our timings, the speakers all turned up and the feedback on the day and afterwards was really good! I also loved chatting to members and finding out how things were going for them. I know this is the part of the AGM that all the Trustees enjoy and gives us a chance to relax a bit during what is a very full-on day! There is a write up on the AGM in this month's WKNs (many thanks to Jenny Hoellen from Nevill WI), so you don't have to take my word for it! Plus there are photos!

So now its onwards to Annual Days, workshops and of course the NFWI Annual General Meeting at the Albert Hall next month, which will be the last in person meeting for 3 years. Again, it's a wonderful opportunity to catch up with friends from other Federations and is a great reminder of how big the WI family is.

Enjoy your West Kent News everyone and I hope to see you at the various events...

Take care

Amanda

Treasurer's Corner



When you read this article most of you will be preparing for your Annual Meetings. Treasurers can breathe a sigh of relief that their accounts have been signed off and are being presented to the members. The year end reconciliation done for another year.

As an IFE, when carrying out the examinations, Acting as Agent can prove a stumbling block in reconciling A6 to B1.6 of the financial statement. My tip would be to match your receipts to the Federation invoices as you go through the year. If you are not going to receive money for an item on the statement e.g. insurance, stationery then you are not Acting as Agent, it is a cost to the WI. Always make sure that money paid for tickets is received from your members. It makes life so much easier for the year end reconciliation.

For the new accounting year, if not previously carried out, reconcile your bank statements monthly, it makes the year end less stressful.

Hopefully most of your members have paid their subscriptions and your WI is in a healthy position for the coming year. Forwarding the Federation and National portion to us promptly is always really appreciated.

I often make the mistake of thinking I will remember something! How wrong can I be in my case! If someone gives me money I have to make a note of who gave it to me, it pays to always have a notepad handy and I thoroughly recommend having a daybook especially at a WI meeting where it can be hectic.

If you are a new Treasurer, please attend our training sessions and occasional ad hoc zoom meetings. Do not struggle, we need you!

As ever, I am always willing to help.

Kind regards

Rita King

FEDERATION NOTICE BOARD

The Lady Denman Cup competition has seen a considerable decline in entries over the past 5 years, so it has been decided that for this year, the competition will be suspended. This will allow NFWI time to research and learn why members no longer want, or are able, to enter the competition and create an inspiring and appealing programme of creative writing courses via the Hub.

Yearbook

Please note that Palace & Penge have a new venue and now meet at the Phoenix Community Centre, 66 Westow Street, London SE19 3AF. They will also now be meeting on the 2nd Wednesday of the month at 7.30pm.

With effect from June, Royal Eltham also have a new venue and will meet at Eltham Park Methodist Church Hall, Westmount Road, Eltham, London SE9 1XX. They will also now be meeting on the 3rd Tuesday of the month from 10.30am.

Please note that the following WIs have suspended
Borough Belles March 2024
Golden Green March 2024
Wateringbury March 2024

List of Speakers 2024

Please note the following additional speaker

Mr Brian Laverick-Smith Malt House Cottage, 184 Mongeham Road, Deal CT14 9LP Tel No: 07710 561075 Email: brianlav@sky.com Fee: £60 plus 30p per mile travel expenses Not available from April to September inclusive Available at short notice
· 30 Years of Bover on The Hover · The Lady and The Mountain · Mountain Mentality (all talks with PowerPoint presentation and Slides or Film)

DATES FOR YOUR DIARY 2024

MAY

Tues 14	PALS Afternoon Tea	Hadlow
Thur 16	Stained Glass Mosaics	Ethel Hunt
Fri 17	Stained Glass Mosaics	Snodland
Sat 18	Stained Glass Mosaics	Orpington

JUNE

Wed 5	NFWI Annual Meeting	Royal Albert Hall
Sat 8 - Sun 16	The Great Big Green Week	
Mon 10	Water Sports	Mote Park
Weds 12	Green Team Walk	Tonbridge
Tues 18	Learn to play Whist	Ethel Hunt
Tues 18	Drawing Flowers	Frittenden
Thur 20	Drawing Flowers	Ethel Hunt
Sat 22	Drawing Flowers	Orpington

SEPTEMBER

Mon 16	WI DAY— Arrange your own promotion	
Thur 26	Art & Craft Annual Day	Ditton

OCTOBER

Thur 31	Whist Day	Ryarsh
---------	-----------	--------

NOVEMBER

Sat 16	Art & Craft Dabble Day	Snodland
--------	------------------------	----------



WI ADVISERS

Bev Wild 0208 8289 3533

It is now getting to that time of the year when you will all be holding your Annual Meetings. One of the issues that crops up each year, that the WI Advisers have to deal with, is when a WI cannot get members to step forward to the Officer roles. Sadly a lot of members think that the role is too onerous and time limiting and so do not put themselves forward with the effect that some WIs do suspend.

The committee work as a team and often roles can be split so that duties and time elements are manageable. It is not always necessary for one person to take on the Officer role as it can be shared so that a members particular skills can be utilised for the benefit of all. Training and ongoing support is offered to any potential Officer by the WI Advisers and Federation Treasurer to ensure that members do not feel overwhelmed.

The Advisers will be holding training sessions for **Presidents** at EHL on Monday 17 June and Zoom on Monday 24 June. **Secretaries** on Zoom Thursday 13 June and EHL Thursday 27 June. **Treasurers** Zoom on Wednesday 17 July and EHL on Thursday 18 July. The sessions at EHL usually run from 10-3 and the Zoom sessions will be in the evening. Please contact the Fed Office if you are interested in attending any of the sessions.

Bev Wild

WI Adviser Chair

West Kent Federation of WIs AGM
 Monday 25 March 2024
 Assembly Hall Theatre
 Tunbridge Wells

Was that a fantastic way to spend a Monday? For visitors to the Tunbridge Wells Assembly Hall, I think so!



The 106th West Kent federation AGM was opened with a rousing rendition of “Jerusalem” from a packed audience. A warm welcome was extended to visitors from other federations and past officers from Amanda Breach who is our Chairperson. Her support staff were all formally introduced as were the Board of Trustees and their roles outlined and the WI’s Advisers.

Rita King delivered her report as Treasurer and it was disappointing to note that we have not only decreased in numbers but have also lost 8 groups whilst only gaining 1. The effects of this downturn in funds comes at a time when all prices are rising and adds challenge to the organisation. Some savings are being made by

the increase in Zoom meetings which have reduced the expenditure on mileage allowances. The budget for next year is looking more favourable thanks to a generous legacy left by a late member. The online publication of West Kent News has also been a way of economising. All the accounts were presented and clearly explained and duly adopted.

Amanda’s address was both forceful and uplifting. She highlighted the need for all members to promote our organisation and to think of ways to recruit from a wider demographic. She noted that the WI is still relevant in today’s world and that it can only be beneficial to grow our membership by engaging with a diverse cross section of new members. Her praise and thanks were fulsome for the organisation’s Committee members and she asked members to be sure to thank their own Committee members regularly. Some of the closures of WIs have been due to the fact that members are reluctant to take on the officers’ roles. Amanda encouraged members to look at innovative ways to support members by offering shared roles and conducting some meetings on Zoom. It was so evident that Amanda loves the WI and the work she devotes to her role, by her warmth and enthusiasm.



I am almost ashamed to say I had never heard of Dr. Annie Gray until receiving my programme for the day. What a revelation! Annie gave a spirited talk on her work as a food historian illustrated by many photos of dishes past and probably better forgotten! Her work has included being an adviser on production of “Call The Midwife” and “Downton Abbey” and through this she was able to evoke mental pictures of the sight of a several times returned to the freezer of a lobster for different shoots.

My mind tells me the smell might have been beyond imagination! It would seem that the WI was probably the only successful provider of wartime food, rationing seemingly made most things bland or worse, horrible. The ladies of the WI were triumphant in their production of jam, what a treat that must have been. I was a child in the early fifties and can certainly recall sugar loaded foods. After the rationing it must have been seen as a way of pleasing many tired palates. Annie’s talk ended with the command to “embrace cake” but my craving/lust is for a prawn Vesta curry, one photo I am unable to unthink! I shall now listen out for Annie on Radio 4 at 10.30 on a Saturday morning.



The morning concluded with the results of the Whist competition and also a reading of her winning poem in the PALS Poetry Competition, “Journey of Rediscovery,” from Miriam.



West Kent Federation of WIs AGM
Monday 25 March 2024

Cont'd

Opening the afternoon's programme fell to the choral group Women in Harmony under their new Musical Director, Merrilyn Watson. The audience was invited to sing along to their choice of 11 songs that not only showcase their voices but also demonstrate an eclectic mix of songs from the past, present and from a variety of cultures. They ended with, what seems now to have become their signature piece, "Jesu."



The afternoon Guest Speaker's role was flamboyantly embraced by one of our own! Lindsey Barrell (aka Ms Cherry Bombe) who is President of an Essex WI. Dressed in corset, black stockings, suspenders and a floaty red negligee she blended in with aplomb suggesting she was advertising the new uniform for Presidents! Her talk was based around her hilarious journey to try and gain friends following a change in family circumstances. Following what seemed like numerous toe dips into a variety of activities all having the same non staying appeal, she found the WI. Cherry seems not to have a "NO" switch! When asked to do, she does and how. A sub group of her WI led her to Burlesque and soon she was touring with a group of "assorted" ladies raising vast



amounts for charity. I think we all would have loved to have seen Maureen who, I think was 75, arrive in her mac at her WI with her corset etc. underneath. Problem was she had the corset on upside down! Another mental picture for me to unthink!



The audience was aching with laughter when ordered to stand ... we partook of a two minute bump and grind routine ahead of rapturous applause for a magnificent entertainer. What a fresh delight Cherry is, thank you for making my side and jaw ache with laughter.

The raffle was drawn and bursaries awarded before the closing thanks from Amanda and we had enough puff to sing "God Save The King."

Roll on next year!

Jenny Hoellen
Nevill WI

Photographs courtesy of Sarah Bond

We had a great time at the AGM Tunbridge Wells and our past President Ann Spain also celebrated her 85th Birthday. Such a fantastic day!

Kathleen Tanton
Detling WI



Once again a packed meeting at **Tenterden Glebe WI**. Our April meeting was busy with members and guests, to see the fantastic speaker Tony Harris as Poirot, telling the story of Agatha Christie, he had everyone spell bound with many laughs and gasps. We are all looking forward to his visit next year

Chris Basden

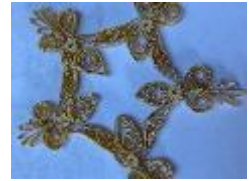




Members of **Shipbourne WI** enjoyed two outings over one weekend – a rather wet, guided walk in London along Fleet Street followed by an absorbing day in Orpington learning to quill. Amongst the interesting buildings and their histories, we found ourselves in Bell Yard where Sweeny Todd murdered his customers, and after his partner in crime, Mrs Lovett, had made pies of their flesh,

we were also shown where he disposed of their remains! Lunch followed in Somerset House!! Not so blood curdling was our day spent quilling. We came away with some intricate works of art and the desire to learn more. Our photos are of what we did and what can be done – all from curled paper and glue .

Helen Leach



Bearsted & Thurnham WI walking group enjoyed a tour of Aylesford village with a member Carole Wale as our guide on the places of historical interest. We made our final stop at The Friary cafe just as it started to rain! .

Diane Parr



Ladies from **Boughton Monchelsea WI** spent a happy afternoon at Barbara's making these Easter chicks. Great fun was had by all!

Anthea Springett



P

A

L

S

GILL BROWN 01732 850571 pals@wkwfi.org.uk

LEARN TO PLAY WHIST

June 18 10am to 1pm. Tickets £7
Ethel Hunt Lodge, 4, Hawkwell Business Centre,
Pembury, Kent TN2 4AG



Perhaps you have always wanted to learn to join in when others play Whist and feel awkward not knowing quite what to do. Whether to lead with trumps or not, wary of playing with a partner. This is your chance to learn how to play this very social game or perhaps brush up on some rusty skills.

Hopefully you will leave the session with confidence to join in with a group at you own WI or other organisations.

Sheila Miles will be the coach to guide you through the game, she is also the lady who supervises play when we have our Whist Day in October.

Please see the application box on the back page which requests the information you need to give for a ticket for this activity. Come along with a friend or by yourself, as there will be someone to partner you to play Whist with.

Closing Date 31 May



A report on Lifestyle Day

A packed hall, not to mention car park, indicated that this event was eagerly anticipated. After a much needed cup of coffee or tea we were introduced to our first speaker. Janie Ramsay delivered a highly entertaining look at the life of King George III and his “disgraceful sons”. It certainly filled a few gaps in my historical knowledge and gave a flavour of the Hanoverian era and its excesses.



Before lunch, Lucy Allen a professional stunt woman talked dramatically about her 34 year career working in film and TV. “From Titanic to Batman” she described her love of daredevil activities since childhood. Look out for her antics in the soon to be released film Wicked.

Lunch break over not to mention shopping from the vast array of stalls around the hall we settled down to hear from local author William Shaw. From music journalism in the 1980s working for Smash Hits, he began to take an interest in crime writing completing his first book in 1968. He charted the different styles of crime books over the years. Good knowledge of the surroundings and location of the crime is to him essential. His love of Kent and its coastline particularly influence him. Look out for his new book The Wild Swimmers out soon.



The work that goes into arranging a day like this should not be underestimated. Thankyou one and all. Anne Willatt. Nevill WI

WOMEN WALK THE WORLD 2024



Crockenhill WI Members, plus a few extras who paid a minimum of £5 to join us on our ACWW walk. The route, (see photo 2) of almost 3 miles took us around our lovely village, which included a history lesson and tour designed by our own village historian, Dr Susan Pittman. So stopping at places of historical interest we went back to 1507, when Henry VII was king, through to 1690 to an ancient burial ground, then through the centuries to present day. It was interesting to see how the village had evolved and amazing seeing so many places of interest right here on our doorstep.



I am pleased to report the team made it back in time for the pub opening! We rattled our money bucket along the route, then into the village shops, and lastly into the pub. Together with sponsorship monies our members received, we made a fantastic total of £368. 51! Which has already been banked by our Treasurer . Well done everyone and many thanks to all our sponsors and the people of Crockenhill.

Cheri Yeates



INFORMATION ON ACWW PROJECTS— THANK YOU ALL FOR YOUR KINDNESS AND SUPPORT DURING 2023.



Project 1132: Ensuring Seed Security through Community Seed Banks

Organisation: Ntengwe for Community Development

Description: Grassroots farmer speaks out during sharing session at a seed fair. Three community seed fairs promoted the role of community seed banks for food and seed



Project 1131: Entrepreneurship Training Programme for Unemployed Rural Women

Organisation: Heritage Charity Foundation

Description: Farmers during a training session. Participants received training on organic farming and climate mitigation to promote a reliable income.



ART AND CRAFT



Paula Bates 01892 327863

artcraft@wkwfi.org.uk

Introduction to **Drawing Flowers**

With tutor Jan Moffitt

Tuesday 18 June at Frittenden

Thursday 20 June at EHL

Saturday 22 June at Orpington

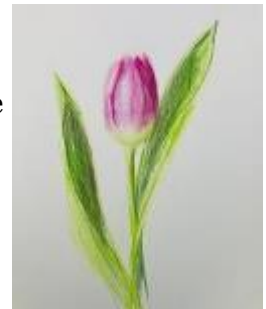
Workshop from 10 am to 3:30 pm. Doors open at 9:30

Please bring a packed lunch and a mug for coffee. Ticket price £29. Members Only
Classes are centred around positivity, creativity and enjoyment – an encouraging space to learn, practice and experiment. They are for all creative abilities – including beginners.

Jan will be doing demonstrations, drawing along with you and coming round to give individual advice.

We will start our drawings by observing and drawing the big shapes that form the flower. Then learn to create shading to give the illusion of form and practice different drawing techniques to create texture.

The second part of the class will be using coloured pencils and learning how to build up depth of colour by overlaying a mixture of colours.



You will need :-

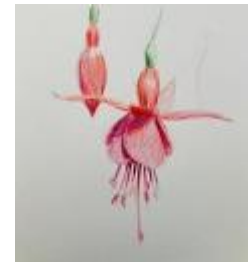
Cartridge paper or pad - ideally A3

Pencil – ideally 4B or softer, eraser

Coloured pencils - a set of about 12 pencils is suggested – Derwent is tutors preferred make.

Jan will bring paper and **graphite** pencils for you to use if you need them.

During the day we will work from work-sheets and real flowers – some flowers will be supplied but please bring your own flowers if you'd prefer.



Ticket application form on back page. Closing date 9 May.



Further to our Quilling workshop on Saturday 23 March at Orpington, I volunteered to send in a report for the West Kent News.

Stephanie Smart from the House of Embroidered Paper, did a great job teaching us the basic skills of Quilling. None of us had done it before so we were all beginners.

Once we had got to grips with the way in which to hold the 'needle', which wasn't really a needle but a long metal instrument with a handle and a slit at the end to thread the thin strips of paper through. Then it was a case of learning how to hold the coiled strips into different shapes and glueing. This could then make a design of our choice. We were given a few ideas such as a Mandela but there were other designs if we had no ideas of our own.

Our tutor was recently a speaker at our Art & Craft Annual Days, had a stall to display some of her work, and showed us photographs. It was breathtaking – gowns and bonnets made from embroidered paper and quilling displayed at Brighton Pavilion and Hampton Court for example.

I believe we all came away having achieved a great deal. If nothing else it was also a chance to get to know members from other WIs and learn from what they were doing at their meetings.

Many thanks to all involved and can't wait for another opportunity to have another go.

Lynda Emberson , Nevill WI



WATERSPORTS 2024 - MONDAY 10 JUNE

Mote Park, Mote Avenue, Maidstone, ME15 7SU

Each Session - either Paddle Boarding or Kayak £15

Back by popular request fun and games on the lake at Mote Park. Stuart and his fully trained and insured crew will be on hand to instruct and guide you. The lake is only shallow but buoyancy aids are available for those who wish to borrow them. Please bring a towel and a change of clothing, footwear - closed toed shoes only please.



Please indicate on your application (see back page) your preferred instruction times.
Paddleboard 10.30am - 11.30am or 12 noon - 1pm

Kayak 1.30pm - 2.30pm

Paddleboarding, as kneeling is involved regret this sport is not advisable for anyone waiting for or who has had knee replacements, Kayaks because of the sitting position, not suitable for those with replacement hips. Kayaks if you have a Pilates block or can bring a towel to pad your lower back against the kayak, it will be more comfortable. You are very welcome to join in with both the Paddleboarding and the Kayaking.



Not up to joining in with the instruction? Why not come along watch the fun or hire one of the pedalos. Photos of the activities please forward to pals@wkwfi.org.uk.

Closing date Wednesday **22 May**, there may be spaces after the closing date but we do need to ensure that the size of each session is not too large. Looking forward to seeing regular participants and meeting the 'newbies'.

To escape the rain in March, some of the ladies from **Boughton Monchelsea WI** enjoyed a great morning bowling at the Hollywood Bowl in Maidstone. Thanks to Margaret for organising



Sadly, Wateringbury WI was suspended at their meeting in March, but the members still enjoyed their annual competition afternoon and hope that they will be able to



start up again within the next three years



Green Team

greenteam@wkwfi.org.uk

WEST KENT GREEN TEAM



Come and walk with members of the Green Team in the great outdoors to mark Big Green Week on Wednesday 12 June. We invite you to join us for a walk from Tonbridge to Haysden Country Park.

This year's theme for Big Green Week is Let's Swap Together for Good so we have chosen Tonbridge Rail Station as our starting point to allow you to swap out your car and travel by public transport. The walk is fairly flat with no stiles and approximately 3.5 miles along the River Medway and around Barden Lake. If walking is not for you, just come along for a picnic and a chat at Haysden Park. There are picnic spots close to the main car park.

The details:

· Meeting point – Tonbridge Rail Station at 11 am. Well served by trains coming down from London, up from Tunbridge Wells and across from Maidstone, Strood and Paddock Wood. Also many bus options too.

· Not everyone has good public transport links so if you drive then you will find free on road parking after 10.30 am in Douglas Road, Tonbridge, a few minutes walk from the station. See map.

· Picnic – bring your own food and drink but no single use plastic. Alternatively there is a café in the park where you can purchase something.

· If you are only coming for the picnic, arrive between noon and 12.30pm and meet the group at Café in the Park. There is a large car park at the main entrance to the park off Lower Haysden Lane, Tonbridge, TN11 9BE. (Parking fee £2).

· This is a free event – but please register your attendance by emailing us at GreenTeam@wkwfi.org.uk



Recycle, repair, reuse: Gravesham Repair Café : First Thursday of the month 10:00 – 14:00

Bring your small broken items, electrical, clothes or bikes.

Free service, donations welcome. Northfleet Veterans Club, The Hill, DA11 9EU

Bexley Village WI raised funds for London's Air Ambulance by having quizzes, raffles and donations. The cheque we presented was for £2,555.00 which helps pay for a mission and some medical supplies. Bexley Village WI members are dedicated fund -raisers collecting 10 shoe boxes filled with toiletries for Bexley Women's aid and 6 bags of toys and children's clothes. Our present fund-raising is for Speakability a stroke unit at a local hospital which we have raised £1,263.77 to cover a day's trip for the patients. I am very proud to be their president.

Patricia Ladbrook



Hollingbourne WI have had a busy, but rewarding March and April. On 22 March we held our Annual Quiz night, and due to the conscientious effort of Janice had a full house. The quizmaster, apart from



being entertaining, gave us not only general knowledge questions but some brain-racking ones to keep us on our toes. During the interval we fortified ourselves with refreshing drinks and nibbles and relaxed during the raffle draw. At the end of the evening the winners were each rewarded with a bottle of wine and the happy losers a jolly useful wooden spoon. Barbara Gibbs

In April **Pembury Evening WI** welcomed Shirley Ellis (a member of Hadlow WI) as she led us through a Walking Netball activity. Shirley is passionate about walking netball, having played netball all her life until hampered by hip replacements. She placed the emphasis on fun, exercise and safety. She led us through a walking warm-up and some exercises with an inflatable ball, firstly throwing while shouting our own name and then doing so while shouting the name of the person that we were



throwing to – the latter being quite a challenge for some of us! She told us of the three main rules of walking netball: no running, no jumping and remaining a metre from our opponents. All difficult to achieve if you have played netball previously. We then formed into teams and had two short games of walking netball, modified to take account of no nets. All who took part enjoyed it.

Gillian Williamson

19 members of **Aperfield WI** enjoyed a trip to the Houses of Parliament organised through the office of our local MP and included visiting the public gallery.



Jennifer Melotte
Secretary

Ladies from **Farningham WI** enjoyed a day at the Fashion City Exhibition at The Museum of London Docklands.

Full of interesting displays and fascinating information, it told the stories behind the Jewish fashion makers who, beginning in humble tailors` workshops, became leaders in their industries and founded retail chains still on the high street today, plus dressed the rich and famous.

After lunch at a nearby pub we moved on to Old Spitalfields market for a spot of retail therapy.



Marilyn Wells

On the 6 April Hollingbourne village celebrated the 1st anniversary of the opening of the community run station cafe.

Hollingbourne WI had a Chocolate Tombola table and many adults as well as children bought tickets hoping to win a sweet treat. All the children who drew non winning tickets were given a small consolation bag of sweets, so went away with a smile. It was a well organised event and attracted many villagers, and our WI were happy to play our part in the celebration.

Barbara Gibbs



Thursday 11 April marked our 55th Anniversary, and for this occasion we had a wonderful party! It Included this beautiful cake made by Sandra Maiden who is featured standing behind it. We all enjoyed ourselves; some members were there who had been there from its formation in April 1969, including Pauline Stone, Vice-President. On behalf of the Committee Members, and WI members generally, I should like to thank everyone for their contribution, including our Entertainer, for making it such an enjoyable occasion!



Judith Bishop, Secretary,
**Allington
Castle WI**



OBITUARIES

It is with sadness that we report the death of **ELIZABETH DRYSDALE (LIZ)** after a short illness. She had been a member of **Badgers Mount WI** for many years and had been our President, Vice President and Committee member. We will all miss her .

Nevill WI is sad to announce the passing of **BETTY WYATT**. She was a much loved and enthusiastic member. She liked to join in as many trips, Federation days and social events as possible. She contributed much and was a very valued member who will be very sadly missed.

Hartley Afternoon is sad to announce the death in March of **JOAN SPREADBOROUGH**. Joan was a very long-standing member and always willing to join in with anything being organised. She was an all-round friendly person, always with a smile, and a keen Whist player.

Bexleyheath & Crayford Waterside WI is sad to announce the death of **WIN ELLIOTT**, our longest serving member and prior to her relocation a valued committee member. Although Win had moved away from our area, she remained a member, attending meetings and 'ladies who lunch' whenever possible, and we were delighted to see her at our 50th Birthday celebration party in June 2023.



Nevill WI would like to send warmest congratulations to **LINDA AND KEITH EMBERSON** on the occasion of their Golden wedding anniversary this month. Enjoy the planned celebrations and here's to many more anniversaries to come.

WHO TO CONTACT

CHAIR:

Amanda Breach
Email: chair@wkwfi.org.uk
Tel: 01892 823813

FEDERATION TREASURER:

Rita King
Email: treasurer@wkwfi.org.uk
01892 354454 Weds or Thurs

CHAIRMAN OF WI ADVISERS:

Beverley Wild
Tel No: 020 8289 3533
Email: wiachair@wkwfi.org.uk

INDEPENDENT FINANCIAL EXAMINER ADMINISTRATOR:

Gillian Neville
Email: gneville@live.co.uk

RESOLUTION COORDINATOR:

Caroline Davis Email: daviscawkf@gmail.com
ACWW: Carol Gupwell
carolagupwell156@hotmail.com
Tel No: 01622 676600

SAFEGUARDING OFFICER:

Jeannette Smith
Email: safeguardingofficer@wkwfi.org.uk

KENT VOLUNTARY EMERGENCY GROUP:

Diane Daniels
Tel No: 01622 674494
Jill Fissenden
Tel No: 01622 758251

WEST KENT NEWS: EDITORS

Linda Wills
Tel No: 01474 834163
Janet Buller
Tel No: 01795 471713
Rita King
Tel No: 01892 354454

ARTICLES—YOUR EVENT

Articles, your events Please no more than 150 words and two photographs. Congratulations and Obituaries (no more than 40 words) . If possible email direct to **westkentnews@wkwfi.org.uk** If not please post to our Ethel Hunt Lodge address see top of page two.

Ticket applications via email:

WI Reps Apply to: **tickets@wkwfi.org.uk** with your WI, Contact Name, Telephone number , event name, number of tickets required, date of event, and venue.

*Tickets are non refundable and non returnable. * Places cannot be guaranteed until after the closing date. If an event is over-subscribed a ballot will take place* The Federation is not liable for additional costs or changes to a programme caused by circumstances beyond its control. Please apply for your tickets promptly, if an event is under subscribed by the closing date, the event may be cancelled.

Postal applications, please complete the form below for **each event** and send to:- Ethel Hunt Lodge, 4 Hawkwell Business Centre, Maidstone Road, Pembury Tunbridge Well TN2 4AG. Postal ticket will be charged an extra £1 for postage.

WI.....Name.....

Email.....Tel:.....

Address & Postcode.....

.....No. of tickets req'd.....

Event.....

Date of event..... Venue.....

Your WI will be invoiced on the monthly account for the number of tickets ordered.