



theWI
INSPIRING WOMEN

WEST KENT WI NEWS

December 2021



SEASONAL
GREETING TO ALL
OUR MEMBERS



We look forward to seeing you at
ALL SAINTS CHURCH Maidstone for our
CELEBRATION OF ALL THINGS WI.

Wednesday 8 December, doors open 1.15pm Tickets are still available, pay at the door £5.00 cash only on the day.

CHAIRMAN'S LETTER



Dear Ladies,

Well, here we are at the end of a tumultuous year, but I think the way ahead is looking brighter!

I have been out visiting WIs again, how normal that feels. I had a tasty afternoon tea at Chelsfield Afternoon WI to help them start their 102nd year. At the other end of the County, I visited Yalding and Laddingford and learnt how to make candles. It is great to see they have over 40 members having just reformed. Then this week I went to The Ladies of the Manor at Chart Sutton a delightful group of young and not so young who listened to a talk by Carol Gupwell of her journey in the WI which led to her becoming a WI Adviser.

I am really looking forward to meeting you at All Saints Church in Maidstone. I cannot believe it will be three years since we were last there. So much has happened since we last met - I have learnt not to take anything for granted.

So, if we are going to celebrate Christmas, then let us celebrate it. Not just in a personal way, but in the light of the pandemic, let us remember others.

See you in the New Year, Happy Christmas and wishing a Better New Year to you and your families.

Jane



Treasurer's Corner



We are now approaching the end of what has been another difficult year for WIs. However, we all have Christmas and hopefully a better 2022 to look forward to.

January means there will only be a few months to the end of the financial year. In next months Treasurer's Corner I will be writing about the Federation's IFE scheme.

Please also keep an eye out for sessions I am planning to run on completion of the Financial Statement. I had hoped to run some last year but a certain Pandemic put a stop to that.

As you can see this is a short Treasurer's Corner but I do want to wish all of you, your members, family and friends a

Merry Christmas and Happy New Year.

Gillian Neville

YOUR WI ANNUAL MEETING 2022

The Trustees would like to remind WIs that in 2022 your Annual Meeting must revert to being held in May. This applies even if in 2021 Annual Meetings were held later in the year.

As such, to be able to vote on the Annual Meeting business and Resolutions, members must pay their subscriptions at the April meeting by the latest.

Art & Craft Annual Days 2021

A scarf was found and handed in and is now at Ethel Hunt Lodge. If you would like to reclaim this please contact our Federation Secretary. Details are at the top of this page.

Unclaimed Raffle Prize, if you have white ticket 470 please contact Paula Bates. Her details can be found on the top of page eight.

Thanks to Istead Rise WI Yarn Bombers for the front cover post box toppers.

COP26

In October, **St Mary's West Wickham WI** was joined by Shooka Bidarian, climate activist and environmental correspondent, who gave us a very engaging presentation on COP26 and tackling the climate crisis. Shooka was getting ready to attend COP26 herself. Following the talk there was a lively Q&A session, with members very interested in changes they could make and action needed at a political level.

The event was attended by members in person and livestreamed on YouTube for those who preferred to watch at home.

Following the event, Members were invited to contribute to the WI Climate Scrapbook. Later in the month former US Vice President Al Gore presented Shooka with the Alfredo Sirkis Memorial Green Ring Award honouring her commitment as a climate activist.



DATES FOR YOUR DIARY

DECEMBER

Weds 8 All Saints Church Maidstone
2022

FEBRUARY

Thurs 24 ACWW Fund Raising Tea Lenham

MARCH

Thurs 10 English Paper Piecing Patchwork EHL
Fri 11 - ditto - Hextable
Tues 15 - ditto - EHL
Weds 16 - ditto - Snodland
Sat 19 - ditto - Orpington
Mon 21 AGM Tunbridge Wells

APRIL

Fri 22 Singing Day Hadlow
Tues 26 Lifestyle Day Ditton
Weds 27 Lifestyle Day Ditton

MAY

Tues 3 Watercolour Workshops EHL
Weds 4 Watercolour Workshops Frittenden
Thurs 5 Watercolour Workshops EHL
Fri 6 Watercolour Workshops Snodland
Sat 7 Watercolour Workshops Orpington

All activities subject to any change in Covid restrictions.

Photos of a fashion show from Lottie's Loft for **BEARSTED GREEN WI**



DECEMBER 2021 FEDERATION NOTICEBOARD

Yearbook:

Page 28: From November **Deepdene Welling WI** have changed their meeting time to **10:30am**. All other details remain the same.

**PLEASE NOTE THE OFFICE WILL CLOSE ON
THURSDAY 23 DECEMBER
AND RE-OPEN ON TUESDAY 4 JANUARY 2022**



PUBLIC AFFAIRS & INTERNATIONAL

Caroline Davis—01892 725571

The Public Affairs and International Sub-committee are hosting a Fund Raising Tea for ACWW (Associated Country Women of the World) at the Lenham Community Centre, on Thursday 24 February. Tickets cost £10. The closing date for ticket applications is Friday 4 February.



Magdie de Kock the ACWW World President, and Afrodita Roma, the Area President: Europe have confirmed they would love to attend our Fundraising Tea as they are planning to be in London for an in-person Board meeting during that month. A member of the Central Office staff will accompany them.

The money raised for ACWW by West Kent members is always very much appreciated and put to good use funding projects. Magdie and Afrodita will talk to members about the latest projects being carried out and how they are transforming the lives of the women involved.

ACWW FUND RAISING TEA

Thursday 24 February at 2.30 pm - Tickets £10
at the Lenham Community Centre, 12 Groom Way, Lenham, Maidstone, ME17 2QT

Non- members welcome , but priority will be given to members.

WI..... Contact Name.....

Address:

Tel No:..... Email:.....

No. of Tickets required: Members..... Non-members.....

For catering planning, please give the name and telephone number of all persons with dietary requirements.....

.....

Apply by post to: Mrs. Diane Daniels, 39 Holtye Crescent, Maidstone, ME16 7DB Tel: 01622 674494

Please include a suitably sized SAE with your ticket application.

Or applications can be made by email to Diane at di.daniels@tiscali.co.uk but then you will be charged an extra £1 for the postage of the tickets. **The closing date is Tuesday 1 February..**

Your WI will be invoiced on the monthly account for the number of tickets supplied.

Please include a suitably sized Stamped Addressed Envelope with your ticket application



New Year Resolutions that are GREEN

We all make or try to make New Year Resolutions ... some we manage to keep and some we are not quite so successful with. But for 2022, what about making some that will help the environment AND help your health and your pocket. We can all make a difference however small by changing a few things at a time. Here's some suggestions:

FOOD WASTE: make a weekly menu, and write your shopping list from that menu. Don't overbuy and maybe have the odd stir-fry to finish up any bits and pieces left over, or a soup or casserole will do the same thing.

BUY SEASONAL: cut out the food miles by buying local and seasonal particularly fruit and veg

INGREDIENTS: read the ingredients of what you are buying. For example, if there is palm oil listed, try to look for an alternative. Spreadable butter lists just 2 ingredients whereas easy butter-like spreads have up to 12.

PLASTIC WASTE: Use a greengrocer who sells loose veg in paper bags, a butcher that will wrap in paper, ditto a fishmonger. Might well be better quality, fresher as well as less plastic packaging.

FLOWERS: 80% of flowers in the shops are imported. Look for flowers grown locally and again cut out the air miles.

WATER: is a valuable resource, particularly in the South East where we have less rain but a higher population. Don't keep the tap running preparing vegetables, or for anything else. Use slightly less water in the bath or switch to a shower. It will save you money as well as saving water.

POWER: A tricky subject at the moment but you can help yourself and the environment by switching off lights, turning down the radiators and simply putting on a jumper.

NON FOOD SHOPPING: What about using your bargain hunting skills by looking for what you want in charity shops rather than buying new. It's amazing what you can find, and what you can save, and you can feel good about it too for helping to recycle those items.

DO YOU REALLY NEED IT? New mobile phones, iPad etc. use large amounts of carbon and precious metals to make. Ask yourself if you really need to replace your existing one.

MEAT – no need to go full out Vegetarian unless you are already, but you could reduce your meat intake by having non meat meals each week, balanced with more fish and chicken and just one of red meat. You might well feel the health benefits too.

Even if you just pick a couple of these ideas ... or have some ideas of your own ... why not decide now to make your New Resolutions **GREEN for 2022.**



The poppy has been the emblem of those who gave their lives in conflict for a hundred years.

It was with that in mind that the **GILLINGHAM WI** set about knitting poppies and making a wreath to hang in our beautiful Gillingham park (the wreath has been much admired by all using the park).

This year we added purple poppies to remember that many brave horses also gave their lives. Next year we will be adding a pigeon, as many helped to save lives and deliver important messages during the war, as we discovered on our much enjoyed trip to Bletchley Park.



GILL BROWN 01732 850571 pals@wkfwi.org.uk

2021 Annual Whist Day—Ryarsh Village Hall on the 2 November



It's been a while since we've heard the sound of cards being shuffled and seen the looks of concentration on players' faces. It was a welcome return to Whist Day. It was a smaller turn out than in the past, but nonetheless enjoyable.

Partner Whist is played by two pairs of partners, whose aim is to win as many tricks as possible out of 13 cards dealt. There were certainly some exceptionally good partnerships in play on the day, with some great scores being reached.

The members took a break from play to enjoy a very tasty ploughman's lunch and dessert. I saw lots of clean plates!

The winning partnership was left June Hudson and right Joan Masters from Joydens Wood WI, with a winning score of 204 points. Jane Backshall presenting them with their medals.

A big thank you to the PALS team for putting this event on, a thoroughly enjoyable day.

Kay Gobins, Catford WI.

MURDER MYSTERY EVENING



A band of merry and intrepid adventurers from all over the West Kent Federation braved the elements of a November evening to travel to St Mary's Platt to investigate dark deeds and solve a murder most foul. We were all eagerly looking forward to an evening of suspense and drama, although there was certainly an element of tongue in cheek humour. The brilliant actors gave it their all, trying to cunningly conceal the identity of the dastardly fiend who killed the debt-ridden upper crust gambler. The assembled hall minutely cross examined the suspects and not all were convinced by their responses. Watching all those lockdown detective series had sharpened our super sleuth senses, and we spotted the guilty culprit and their greedy jealous motives, due in part to prodigious note taking and forensic examination of the evidence. However in my book it always comes down to Love, Money, Sex or Jealousy!

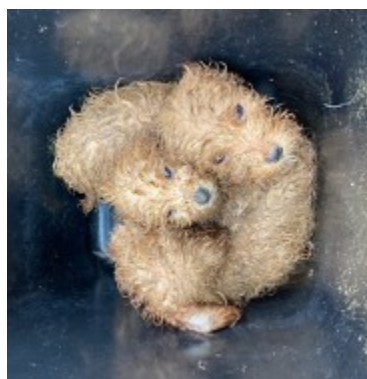
It was so lovely to be out at an evening event after the last 18 months of captivity. It was four years since we went to the last Murder Mystery evening and this was every bit as enjoyable – a chance to meet up with friends from other WI's. The raffle, called half way through the evening, was full of really lovely prizes great for Christmas decoration or consumption.

Some members tables would have won the award of Slimmer's of the Year, alas for our waistlines, our "party atmosphere" table (Royal Eltham) was heaving with delicious grub including two home-made cakes. Well it was a WI event after all and we brought two husbands! So we very politely refused the offered mince pies, quality street and tea and coffee by the lovely ladies from PALS who had so beautifully organised them, but thanks for thinking of it and laying them on for all of us.

The ladies of the PALS Committee worked so hard to make our evening perfect so a huge vote of thanks to them for all they did to lay it on for all of us. Sue Boner, Secretary, Royal Eltham WI



A small group of WI ladies and their dogs walk regularly on a Wednesday morning. We were on a circular walk around Tutsham. It was a pleasant morning and an enjoyable, chatty walk.

A small, fluffy, light brown puppy sitting on a carpet. The puppy has curly fur and is looking towards the camera.

One of the puppies was adopted by another nurse and the Vet bagged one for a friend of his. Leaving one. On hearing about the poor things and seeing the photo David Swan said we'll have one. Freddie is now settled in and has the walkers as "aunties". Helen Swan—The Farleighs WI



*Well done
EAST PECKHAM WI
for producing this beautiful
knitted poppy wreath for the
Village War Memorial,
November 2021*



It is hard to know where to start, having seen some of Cheri Yeats news letters, we feel we have to share with you what their WI has provided for the cause of Bexley Women's Aid.

This is all condensed as there are pages of lists and photos. Enough shoe boxes to fill two cars with items for women who, unfortunately need the services of the charity, 26 handbags for women filled with practical and also special items, toiletries, toothpaste and brushes, notebooks, magazines—a bit of pampering. For the girls and boys new nightwear and underwear, tee shirts, games, sweets, kid's toiletries. Something to call their own. Practical things for the babies, clothing, wipes, teddies, baby towels. Clothing new and if

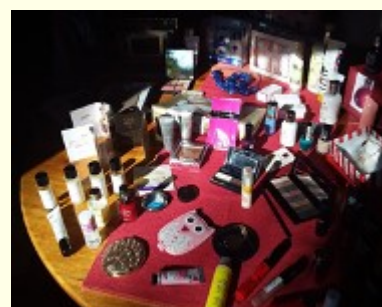


The centre and residents were enthusiastic in their thanks.



BEXLEY VILLAGE WI On the 13 October,

Bexley Village WI celebrated their 10th Anniversary in a new hall after an absence of 18 months. It was so nice to have a face-to-face meeting enjoying a birthday cake and a quiz , 49 members attended and we welcomed four visitors.



ART AND CRAFT



Paula Bates 01892 327863

artcraft@wkfwi.org.uk

ENGLISH PAPER PIECING PATCHWORK WORKSHOPS

Tutor Nancy Adamek (from Lina Patchwork)

10am to 3:30pm. Doors open 9:30am for registration.

Cost of ticket £22.00 to include tea/coffee on arrival and at lunchtime.

Please bring a packed lunch. Priority to members.

Kit charge £4.00 cash on the day for fabric and paper pieces.



Using 3 different paper piece shapes we will be making a rosette design of approximately 10 inches finished size (stitched to a background square). This rosette can then be finished off by hand or sewing machine and be turned into a small cushion, placemat, mug-rug or bread-basket liner. This is a great beginner level workshop! We will of course cover the basic English Paper Piecing technique, but Nancy will give lots of tips and teach tricks 'to get it right'.

Participants should please bring (if they have):

Their spectacles if needed

Good, sharp pair of scissors (to cut fabric)

Needle threader & thimble (if needed)

Pins

Hand-sewing needles (fine ones)

Hand-sewing thread (good quality)

(Nancy will have a supply of needles and threads available for use on the day as well)

English Paper Piecing Patchwork Workshops

Thursday 10 March Ethel Hunt Lodge, Pembury

Friday 11 March St Peters Church, Hextable

Tuesday 15 March Ethel Hunt Lodge, Pembury

Wednesday 16 March Townsend Hook Bowls Club, Snodland

Saturday 19 March St Nicholas Church Hall, Orpington

10am to 3:30pm. Doors open 9:30am for registration.

Cost of ticket £22.00 to include tea/coffee on arrival and at lunchtime.

WI.....Contact Name.....

Address and Post code.....

Phone No:.....Email.....

No. of Tickets Member..... Non Member.....Workshop Date.....

Venue

Please apply to Mrs. Susan Boner, 311Westmount Road, London SE9 1NR Tel:0208 856 9536

Closing Date 31 January, Please enclose an appropriate size SAE for your tickets

Your WI will be invoiced on the monthly account for the number of tickets issued.

Bearsted & Thurnham WI celebrated the talents of their Art Group with an exhibition of their pictures painted in lockdown. The group supported each other through WhatsApp and decided on a project each week sharing their efforts on a Sunday. I think you'll agree the results were amazing.

Diane Parr



Matfield WI Flights played our last match of the first round in our Group against Ightham WI a lovely friendly afternoon where they beat us 2-0, but a good time was had by all with plenty of tea and home made cakes and chatter.

Amanda Everett

Captain - Matfield WI Flights.



CHELSFIELD AFTERNOON WI

It was 101 years ago this November that a Women's Institute was formed in Chelsfield Village.



To commemorate this the current members raised funds to have a special celebration in November 2020, but alas it was not to be, despite a lot of effort Covid lockdown came, so it was postponed until October, 2021.

A fabulous lunch was held at Westerham Golf Club, organised our committee. There was also entertainment by Miss Vintage singing all the old songs with everyone joining in.

We also held a celebration afternoon tea for the 101st Birthday at our November Meeting



On Monday November 15th the West Kent Zoomers were excited to open their virtual doors to all of you, and what a crowd we had! Over 70 of you amazing ladies turned up, smiling and happy.



We had a blast, thoroughly enjoying a good chat about the potential that our new WI has for the future. Watch this space for more exciting evenings planned with Tony Harris, Felicity Jennings, and The Green Team. Please join us in December **(Monday December 20th, 8pm)** to make a sock snowman, and enjoy a short Christmas Quiz. We can be found on social media as West Kent Zoomers, or you can sign-up for more information at www.subscribe.com/westkentzoomers. Thank you all for believing in us!



This photo of an oversized bauble, being moved by Santa's little helpers, at Kings Hill, arrived too late for December 2020 WKN. Thank you to Bridget at **WEST PECKHAM WI** for sharing it with us.



OBITUARIES

Bearsted & Thurnham WI was sad to hear that **FELICIA RILEY** had died after a short illness. She was one

of our longest serving members and was on the Committee for many years as well as taking on the roles of Hall Chairman and Secretary. She had a lovely personality and was well respected for her knowledge and calm considered opinions. She also enjoyed the book club, mah-jong group and each week joined the craft group to whom she gave all of her craft materials. She was someone who will be greatly missed.

Istead Rise WI was shocked by the sudden death of **PAULINE WALTERS**, a committee member in her younger years. Our thoughts are with her husband Brian and with her family.

Rowhill WI regrets to announce the death of **RENEE BILSON** who passed away at the beginning of November. Renee was one of the founder members of Rowhill's walking group and will be sadly missed. Our thoughts are with her family at this very sad time.

OBITUARIES

Royal Eltham WI is sad to report the death of our member **SUSAN MILSOM**. Susan was a lovely fun lady who had been very active both on and off the committee. She will be much missed by all those who knew her and our sincere condolences go out to her friends and family.

Highgate Hawkhurst WI is sad to announce the loss of **CARMEN BICKLE** and **ANNE FELTON-GERBER**, members since 2011 and 2007. These two ladies, friends for 57 years after Carmen went to work for Anne as her housekeeper in 1964, were dual members of Horsmonden Morning WI whom they joined after meeting them during a trip to Denman in 2012. Both ladies were loyal, generous and kind and will be remembered for cheese scones, apricot tart, a love of Scrabble, quick wit and a dry sense of humour. They will be greatly missed by all who had the privilege of knowing them.

Members of **Halstead WI** were saddened to hear of the deaths of **PAM KITCATT** and **RUTH VERRALL**. They were both longstanding and valued members until unable to attend due to ill health.

WHO TO CONTACT

CHAIRMAN:

Mrs Jane Backshall

Email: chair@wkfwi.org.uk

FEDERATION TREASURER:

Mrs Gillian Neville

Email: treasurer@wkfwi.org.uk

CHAIRMAN OF WI

ADVISERS:

Mrs Carol Gupwell

Tel No: 01622 676600

Email:

carolagupwell156@hotmail.com

INDEPENDENT FINANCIAL

EXAMINER ADMINISTRATOR:

Mrs Elizabeth Patterson

Tel No: 0208 777 5640

RESOLUTION COORDINATOR:

Mrs Annette Smith

Email: kimbersmith127@gmail.com

ACWW:

Mrs Tricia Ashdown

Tel No: 01622 737175

KENT VOLUNTARY

EMERGENCY GROUP:

Diane Daniels

Tel No: 01622 674494

Jill Fissenden

Tel No: 01622 758251

WEST KENT NEWS:

EDITORS

Mrs Linda Wills

Tel No: 01474 834163

Mrs Janet Buller

Tel No: 01795 471713

Mrs Rita King

Tel No: 07931 502312

ARTICLES—YOUR EVENT

Articles, your events Please no more than 150 words and two photographs. Congratulations and Obituaries (no more than 40 words) If possible email direct to westkentnews@wkfwi.org.uk If not please post to our Ethel Hunt Lodge address see top of page two.

WEST KENT FEDERATION OF WIs

2022 Annual Bursary for Education in any subject

Please submit only one personal application – thank you either on this form, email or letter

WI

Name

Address

.....Postcode.....

Tel No

Email

Apply online to: Geraldine Martin

Email: ghoganmartin@gmail.com

or to the Federation Office at Ethel Hunt Lodge
clearly marked 'Bursary'

Closing Date: 31 January 2022