



WEST KENT WI NEWS

June 2025



PALS WATERSPORTS



ART AND CRAFT APPLIQUÉ WORKSHOPS



PA&I INTERNATIONAL AFRICAN EVENING



ART AND CRAFT ANNUAL DAY



VIEW FROM THE CHAIR



The weather has certainly taken us on a journey recently from a run of hot days and then a drop of 10 degrees that had me reaching for my jumpers again!! However, we do now seem to be summer mode thank goodness.

Our first Federation event was the Lifestyle Annual Day and was very successful, many members mentioned how good the speakers were and what a great day it was. However, it was a shame that we had quite a few unsold tickets! Maybe the timing was the problem due to VE day and a later Easter. After each event we have a de brief, and the timing of events is something we look at, but I do urge all members to try to attend our Federation events. It's our main source of income after membership and we can no longer put on events that will make a loss. So, please support your Federation by attending if you can and if there is something you think we should consider to put on please let us know!

Talking of which this month we have something for everyone -the Big Green Week walk from Shoreham train station, watersports at Mote Park and an introduction to pastels at various locations across the Federation. Of course, we also mustn't forget the online NFWI Annual meeting on Wednesday 4 June! It's an action-packed month!

As always do come and say hello!

Take Care

Amanda

FEDERATION NOTICE BOARD

West Kent Federation is pleased to announce a new WI within the Kent Gate Group – **Beckenham Belles**. They meet on the **2nd Monday** of the month at **10.00am** at Richmond Hall, Beckenham Methodist Church, Bromley Road, Beckenham BR3 5JE.

Yearbook

Please note that the start time of **Hurst WI's** meeting is now **10.15am** instead of 10.30am. All other details remain the same.

List of Speakers 2024/2025

Pages 4, 16 and 24: Please be aware that very sadly Julia Davies has passed away.

Ladies please remember to apply for your tickets promptly with your WI Rep. If an event is under subscribed by the closing date, the event may be cancelled.

Treasurer's Corner



This month I am going to put my IFE hat on! IFE for the new Treasurers stands for Independent Financial Examiner. We examine accounts within our Federation and they are allocated via Gillian Neville our co-ordinator.

Many of the accounts I examine are what I call "a tick box exercise", with everything carried out beautifully. These are usually completed by seasoned Treasurers. For new Treasurers it is important to know how we carry these out.

The very first thing I do is reconcile the bank account by making sure the figures in the Financial Statement B1.1 agrees to the total in B1.2 after accounting for sums that had not cleared the bank when reconciling.

Section B		Statement of assets and liabilities at the year end	
B1	Cash funds		Total
			£
B1.1	Final bank balance as per Account Book, including uncleared items		2,010.46
B1.2	Reconciliation of final bank balance from Account Book to bank statement		
	Bank statement total at year end	2,300.59	
	Plus amounts paid in to bank but not cleared	10.00	
	Less cheques written but not cleared	300.13	
	Less any cheques still uncleared from last year		
	Total (should equal balance at B1.1)	2,010.46	

I will then tick off each entry on the bank statements to the Receipt and Payment Worksheets or to the manual Accounts Book.

This should be reconciled by the Treasurer every month meaning any differences can immediately be spotted and rectified.

It does surprise me that this is not always carried out, meaning differences can carry on for the full year. This makes the Treasurer's job harder and the IFE could spend a great deal of time finding the difference/differences. For example, the IFE must be able to identify the bank account transactions to the accounts book, rather than having to guess what transactions make up a deposit.

Remember, take your notebook to every meeting, the notes you make can come in very handy when trying to work out what went wrong when things don't reconcile.

Finally, when sending in your Financial statement make sure that A6 equals B1.6 on the Financial Statement.

Kind regards

Rita King

MEET YOUR TRUSTEE

60 SECONDS WITH:-

Name: Amanda Bird

WI and WI Credentials:

South Park in Maidstone and Dual Boughton Monchelsea. South Park committee, PALS and Lifestyle committees.

Hobbies / Interests: Motor Racing, track-side marshal, and qualified race Time Keeper. Various art and craft's.

Last book read: William Shaw - The Wild Swimmers, Kent based murder.

Favourite film: James Bond love them all.

Music choices: Classical & 70's David Essex and Sir Cliff

Most memorable holiday: two center holiday to Hong Kong & Bali before HK was handed back to China.

What do you love about the WI:

Opportunity to try new Art and Craft skills and other things like Paddle boarding, making new friendships and support when needed.

Marmite: HATE IT, but like our late Queen, have loved marmalade sandwiches for ever.



DATES FOR YOUR DIARY 2025

JUNE

Sat 7—Sun 15	Big Green Week	Near You
Mon 9	Green Team Walk	Shoreham
Mon 16	Watersports	Mote Park
Thur 19	Introduction to Pastels W/shop	EHL
Fri 20	Introduction to Pastels W/shop	Snodland
Sat 21	Introduction to Pastels W/shop	Orpington

AUGUST

Tues 12	International Evening	Sevenoaks
---------	-----------------------	-----------

SEPTEMBER

Mon 8	Watersports	Mote Park
Tues 9	Broderie Perse Workshop	EHL
Thur 11	Broderie Perse Workshop	Snodland
Sat 13	Broderie Perse Workshop	Orpington
Weds 24	Art & Craft Annual Day	Ditton

OCTOBER

Sat 11	Auditions Day	Hildenborough
Weds 15	Matthew Palmer Watercolour W/shop	EHL
Thur 16	Matthew Palmer Watercolour W/shop	Hextable
Fri 17	Matthew Palmer Watercolour W/shop	Snodland
Sat 18	Matthew Palmer Watercolour W/shop	Orpington
Weds 22	Lifestyle Annual Day	Ditton
Thur 23	Annual Whist Day	Ryarsh

NOVEMBER

Fri 21	Murder Mystery	St Mary's Platt
--------	----------------	-----------------

HAVE YOU?



For International Friendship Day—**Have you** made a friendship within the WI? If so, we would love to hear how this has impacted on your life?

We would also be grateful for your recommendations for a good read, for a feature in a WKN Book Corner

for July/August which may even become a monthly feature!

Please email all text, recommendations and any photos to sysadmin@wkfwi.org.uk

Many thanks,
Keeley Smart



Congratulations!

St George's Beckenham WI are pleased to announce that **LIZ POULTER**, our Treasurer, and her husband **DAVID** celebrated their Golden Wedding Anniversary on 24 May. Our warmest congratulations to them both and wishing them many more to come.

REPORT ON THE LIFESTYLE ANNUAL DAY WEDNESDAY 7 MAY

The day at Ditton Community Centre began with welcomes and was followed by Katherine Hook talking about gin, sloe gin, and chocolate. Katherine runs her own business from her home in Smarden from where she has been making award winning sloe gin chocolates for many years. Every attendee was given a sloe gin chocolate and a raffle ticket to win a box of these chocolates.

Michelle Ernoult gave a very interesting and informative talk entitled 'Around the Beehive'. She told us about what goes on inside the beehive and why bees swarm. Michelle answered many questions and we all learnt something new about the importance of bees in the natural world.

During the lunch break members could visit the various stalls and purchase raffle tickets.

In the afternoon members were entertained by Mig Kimpton, a horticultural adviser with his own award winning business in Deal, who created three amazing flower arrangements, which were part of the raffle, while talking about his life as a florist and all the wonderful arrangements he makes.

A very big thank you to all who contributed and attended to make this such an enjoyable and successful event; three fantastic speakers and an excellent way to meet up with other WI members.

On behalf of the Lifestyle Team

WI Lifestyle Day

The Farleighs WI

A group of us attended the WI Lifestyle Day at Ditton Community Centre and were not disappointed. The three speakers were very interesting and kept us entertained all day.

Mig Kimpton gave us all a fascinating and hilarious talk on his life, interests and experiences while creating three glorious flower arrangements on stage. A very talented man indeed.

Katherine Hook, founder of 'Sloe Seduction' described setting up and running her small Sloe Gin Chocolate business with enthusiasm and humour.... and we even got a free sample!

Michelle Ernoult gave a fascinating talk on beekeeping. Who knew that male honey bees were so lazy! Her talk was delivered with enthusiasm and deep knowledge of the subject.... a real eye opener.



The many stalls meant that we also enjoyed a shopping experience and came away with many home made goodies! Thank you WI for arranging such a lovely day.

Judy Balchin



GILL BROWN and JEANNETTE SMITH pals@wkfwi.org.uk

WATERSPORTS 2025 - MONDAY 8 SEPTEMBER

Mote Park, Mote Avenue, Maidstone, ME15 7SU

Each Session - either Paddle Boarding or Kayak £15



Back by popular request fun and games on the lake at Mote Park. Stuart and his fully trained and insured crew will be on hand to instruct and guide you. The lake is only shallow but buoyancy aids are available for those who wish to borrow them. Please bring a towel and a change of clothing, footwear - closed toed shoes only please.

Please indicate on your application (see back page) your preferred instruction times.

Paddleboard 10.30am - 11.30am or 12 noon - 1pm

Kayak 1.30pm - 2.30pm

Paddleboarding, as kneeling is involved we regret this sport is not advisable for anyone waiting for or who has had knee replacements. Kayaks because of the sitting position, not suitable for those with replacement hips. Kayak if you have a Pilates block or can bring a towel to pad your lower back against the Kayak, it will be more comfortable. You are very welcome to join in with both the Paddleboarding and the Kayaking.

Not up to joining in with the instruction? Why not come along watch the fun or hire one of the pedalos. Photos of the activities please forward to pals@wkfwi.org.uk.

Closing date 1 August, there may be spaces after the closing date but we do need to ensure that the size of each session is not too large. Looking forward to seeing regular participants and meeting the 'newbies'.

Tatsfield WI plus family members, enjoyed a leisurely Sunday afternoon walk amongst the stunning Bluebells taking us through the ancient woodlands of Parkwood close to the picturesque North Downs.



Bredhurst WI did a 5k walk on Tuesday 29 April around Shorne Country Park to raise funds for ACWW. It was a glorious sunny day and they decided to follow the 'Red Route' which took them to both the highest viewing point and to one of the lowest points where the fairy ring is situated and where they decided to have a rest, having descended the infamous 'cardiac hill'. The morning ended with a relaxed drink and chat in the cafe. Donations from members to be collected at our May meeting.

Rosemary Tidby and Gill Bowden



ART AND CRAFT

Paula Bates

artcraft@wkfwi.org.uk

Introduction to Broderie Perse (French for Persian Embroidery) With Maxine Keeble

Tuesday 9 September at Pembury

Thursday 11 September at Snodland

Saturday 13 September at Orpington

Please bring a packed lunch and a mug for coffee.

10 am to 3:30 pm, Doors open at 9:30 am

Tickets: Members £27.00 Non-members £32.00

Priority to members



Maxine was formerly Head of Textiles at a Kent Grammar School and a Qualified Adult Education Tutor.

Broderie perse is an appliqué technique where motifs, such as flowers, leaves and birds, are cut from a piece of fabric and then appliquéd onto a larger piece of plain fabric by combining motifs to create a pleasing new design. The day will start with brief look at the history of Broderie Perse.

The technique will be worked using hand embroidery on a small panel approximately 50cm x 50cm ideal for a cushion front, wall hanging or centre piece for a quilt. This workshop is ideal for both beginners and the more experienced. Step by step written instructions plus demonstrations will be given on all stages throughout the day. Further ideas for embellishment and decoration will be discussed before you go home.



Appliqué Perse Kit Charge £5 payable in cash on the day will include: Bonda web, printed instructions, plus fabric and thread to practice with.

You will need to bring scissors, pins, embroidery threads, needles, background fabric and patterned fabric. Full details on application.



Ticket application box on back page. Closing date for tickets Friday 22 August

An eggcellent April meeting for the ladies of **Boughton Monchelsea WI**. We all made a felt Easter bunny and then admired some Easter bonnets modelled by some of our members.

Anthea Springett



Boughton Monchelsea WI 2024 Bursary Winner

One Friday afternoon in March I had a go at making a Silver Bangle.

My Tutor was Alison, she had cut the Silver to the length we had discussed, but I had to straighten it.

This was done with a special type of fret saw, which was very awkward to keep straight. I then decided on the finish which was made by putting it through a very small Mangle with a piece of very rough sand paper to make the marks and make it into a circle.



Filing the edges came next, to try and make it more level and round at the ends.

Then I had to heat it with a blow torch (wearing protective goggles & gloves) so that I could then hit it repeatedly to get the shape right, this took several attempts. It was put in a container and spun around with stones to shine it.

Margaret Boakes



Hurst WI in Sidcup celebrated their first birthday at their meeting on 14 April. After the meeting had been opened and members welcomed by the President Mary Pring, the committee delivered a presentation on the achievements of the group in its first year. This included the setting up of 9 sub groups from Crafting to Lunching to Theatre to Walking to Bridge to name but a few. Establishing and supporting links with a local Food Bank as well as setting up a process for recycling blister packs. After a chance for coffee, cake and a catch up all members participated in a game of bingo and the chance to win an Easter Egg. The room had never been so quiet!!

We are now 80 members strong with a growing waiting list.

President Mary said "We have come a long way in the last year. Its been so encouraging to see so many members participating in the activities and supporting each other. Strong friendships have been formed and myself and the committee are looking forward to more activities over the coming year"



ISTEAD RISE WI had a stroll around the lakes and the Bluewater Nature Trail for its ACWW - Women Walk The World - walk. The boating lake was in full action, with radio-controlled sailing yachts, tugs, and motor boats nipping around. It was a lovely day; the next lake had assorted ducks and geese. We were delighted when a mother swan stopped right beside us with a flotilla of cygnets and some had also hitched a ride on her back. At one point some intrepid people whizzed overhead on the zip-wire, too quick for us to get pictures. Walking back to the Centre we smiled to see a knowledgeable goose actually use a zebra crossing to cross the road. We are sending £45 towards ACWW.



The Yarn Bombers have, once again been hard at work with their Post Box VE Day offering.

Members of **Catford WI** recently enjoyed an evening of Zentangle. This method of creating abstract, repetitive patterns on small tiles is a form of mindful doodling. By using repeating structured lines and shading, it encourages relaxation and a meditative state as you concentrate on the work. All we needed to take part was a fine black pen, soft pencil and tightly rolled cone of paper for smudging. Our teacher, Kusam, talked us through each stage and, while we all followed the same instructions, as you can see each one turned out differently.



ART AND CRAFT

Paula Bates

artcraft@wkfwi.org.uk

Art & Craft Annual Day

Wednesday 24 September

Ditton Community Centre ME20 6AH

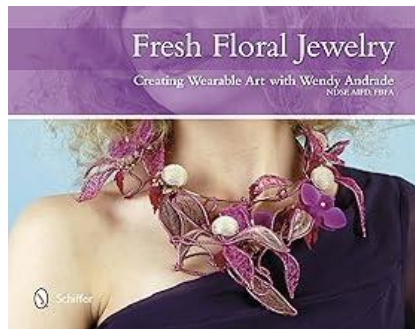
10:30 am to 3:30 pm, doors open 9:30 am

Please bring your own mug for coffee and a packed lunch.

Members Tickets £15. Non-members £20.

SPEAKERS:

Wendy Andrade, NDSF AIFD CFD FBFA has a passion for all things floral and would love to share her story about how she became a published author through the love of crafting. Join Wendy as she takes you on her journey of creating two floral crafting books that have sold worldwide and have led to many fun adventures .



Kate Marlborough-Fletcher dresses as Anne Boleyn for an entertaining talk to take us back to the sixteenth century with a live demonstration of how and why Queen Anne would have dressed and the significance of certain colours, weights and fabrics of the apparel worn.

Curtis Tappenden: The Art of the Circus. Curtis is an author and illustrator who has for many years been drawing for magazines, books, advertisements and newspapers. He has written books and visits art clubs around the country with his unconventional presentations. Curtis is a performance poet and painter and has been drawing live in Britain's circuses. He will give an entertaining talk about the history of the circus and his own passion and involvement with them, finishing off with an art demonstration.



Our ever popular Bring & Buy stall will be there as well as the excellent supplies from Rainham Sewing and artisan retail stalls.

Ticket Application on back page. Closing date Friday 5 September 2025.



Green Team

greenteam@wkwfwi.org.uk

Flying the flag for British goods!

We can make a difference by choosing to purchase British goods!

★ But why buy British goods?

First, it creates jobs here, directly supporting the local economy by keeping money circulating in Britain and so improving quality of life for us all.

It has a positive impact on the environment—British goods have a smaller carbon footprint, which increases with the need to move goods around the world. Take for example British apples and pears which have few food miles, or salad crops grown at Thanet Earth. Many companies prioritise sustainability and eco-friendly practices, and follow stricter environmental regulations.

Britain has higher animal welfare standards compared to imported food, also strict rules about safe and hygienic working practices.

British produce can be of better quality and craftsmanship, with durable and well-made items. It supports traditional crafts and preserves our heritage.

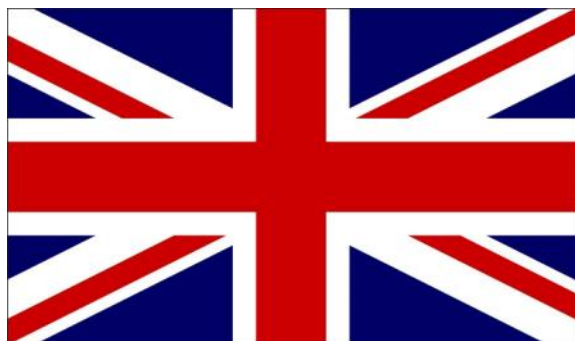
★ How do we buy British?

The Union Flag logo sadly doesn't necessarily mean goods were entirely made here. The logo 'Made in Britain' signals that Britain was where the goods underwent significant change during their final process, so can be relied on. Read the small print carefully!

Shop at local businesses. Use your local Farmers Market if nearby, and get to connect with local farmers and makers who live close by.

Research and buy online from British retailers. Check the 'About us' section of a company's website which gives useful information. Consult www.madeingreatbritain.uk Follow the Facebook site Buy British Made which has extensive albums listing British goods.

★ Making the decision to buy just a few British items can make a difference! Try GB-made petfood, carpets, electricals, cleaning products.....the list goes on!



South Park WI craft ladies have decorated a couple of the trees in South Park for VE day.

Photo shows two of our ladies Gwen and Eve, with one of the trees.



Some of our members enjoyed a trip to the Fan Museum, Crooms Hill, Greenwich. We enjoyed been shown around the beautiful house and learning all about the fans in the exhibition. We then had a little walk around Greenwich and had lunch.

Anne Stubbington
Abbey Wood WI



Some of our ladies made iris folded Easter cards at our monthly craft group. Well done everyone.

Madginford WI





PUBLIC AFFAIRS & INTERNATIONAL

Diane Daniels — pai@wkfwi.org.uk

INTERNATIONAL (AFRICA) EVENING

Sevenoaks Community Centre Bat and Ball Centre, Crampton's Road TN14 5DN

Tuesday 12 August 7pm to 9pm (Doors open 6.30pm)

Ticket Price £12 per person

Please come and join us and with our speaker Kim Biendell

'Life growing up in South Africa' – pre and post apartheid

Then further entertainment with Master Drummer **Souleymane Compo** is the Founder and Artistic Director Wuntanara. Souleymane was born into the proud musical tradition in Guinea. As a young man he travelled to The Gambia, where he continued his training in the traditional arts with Guinean masters, in the famous Fatala Drum and Dance School. He soon began teaching African drumming and dance to students from all over the world. An accomplished dancer, he also became choreographer and lead dancer for the Fatala Ballet troupe.

Souleymane moved from Africa to London in 2004. Since then, he has been teaching and performing in schools, weekly classes, festivals and private events across the UK. He combines warmth and patience with great musical knowledge and skill. He is an inspiring teacher, as well as an accomplished performer.



Taster Food and drink

(No dietary requirements can be accommodated on this occasion)

We look forward to seeing you there.

Please see back page for ticket applications.

Closing Date: 18 July.

Crockenhill WI's April meeting was a celebration of the start of spring and the collection of Easter donations for Bexley Women's Aid, (BWA). We have been supporting this refuge for over 36 years. As usual our wonderful and generous members donated bags of Easter Eggs and Chocolate gifts for the children and women there. Every year the donations get bigger. We also donate items to them every Christmas. Our speaker of the evening was the Chair of the Trustees at BWA, Susan Stansfield who has been supporting and working at the refuge for nearly 30 years. She had everyone in the hall listening to her every word for an hour and a half. Actually we could have stayed listening to Susan all night. She not only explained her role and her work at the refuge, who are celebrating their 50th birthday this year. (Each year they are sadly needed more and more). Susan also talked about her 22 year career in the MET POLICE as a DCI in both the murder squad and cold case team, where she dealt with some very high profile cases. Her current role is as a lecturer at Hendon Police College and she continues to instruct young police officers on how to support and protect domestic violence victims. Susan was an excellent speaker and an inspirational woman. We are all looking forward for a return visit. After her talk Susan joined members in some light refreshments and enjoying homemade hot cross buns and Easter cupcakes. There were also glasses of fizz or fruit juice and a cuppa for everyone.

Cheri Yeates



Celebrating V.E.Day.

There were various displays by **St. Michaels WI**

We thank a local roofing company for their manpower in putting up the large swathe. The many people and hours spent knitting or crocheting to enable such displays. Great community spirit.

St. Michaels WI



We had a joint AGM and VE80 evening which was enjoyed by 29 of our members. Two ladies dressed in costume and the rest in red, white and blue. We had scones with jam and cream to go with our tea and coffee. **Gravesend WI** started in September 2010 as our tablecloth shows which was created by members using cross-stitch showing landmarks in Gravesend and the River Thames.

Pauline Mason
Secretary GWI



Spitfires Group Easter Bonnet Extravaganza!

Downe Village Hall

On 11 April, **Downe WI** hosted a Cream Tea for our Group, Biggin Hill Evening, Aperfield WI, Keston & Downe. Since 2023 our Group was formed to share events and information and enjoy each other's company. We gathered in the 'snug' village hall, which was expertly decorated for the occasion, all of us donning our Easter Bonnets, trying to impress the judges.

What a spectacle! The delicious cream tea was accompanied by a Folk Band called 'Iggle Piggle' which added to the fun atmosphere. It was almost impossible to single out one hat from the vast array, and eventually Mary Street's creation from Aperfield WI won. A big 'thank you' to Sheila, Jeanette & their team, we all agreed it was a splendid occasion.

Sue Ede BHEWI.



On Tuesday 29 April, **Hartley (Evening) WI** organised a walk in aid of the Rural Women in Action Fund. Luckily, it was a warm and sunny morning as 12 of us met at Church Road, Hartley and set off on a beautiful walk through Foxborough Woods where we were enchanted by a trail of fairy doors on trees and a carpet of bluebells. We walked for about 3 miles and ended with well earned refreshments provided by six more of our members.

Altogether we raised £100 for ACWW Day and gathered to highlight global solidarity amongst women, a good time was had by us all. A big thank you to Alison Kirkby and Julie Wilton for organising the walk and Chris Menzies for hosting the refreshments.





OBITUARIES

Members of **South Park WI** were sorry to hear the passing of **MOLLY PHILLIPS**, a founder member of their WI in 1973. Molly took an active part in our activities over the years until ill health made life too difficult to attend. We remember her aptitude and willingness to take part with kind thoughts.

Southfleet WI is sad to announce the passing of **SANDRA BRUCE** after a short illness. Sandra was so kind and always had time for others, including supporting the local elderly residential home. She was always on hand to offer help and keen to participate in all activities. Sandra will be greatly missed by many, and our thoughts are with her family.

Hollingbourne WI is sad to hear that **JANE DEAVES** had passed away. Jane was born in Calcutta but lived in Hollingbourne since 1968. Jane was an excellent Minutes Secretary and supported the WI in every way she could, attending meetings, outings and events. We will miss her very much.



Shipbourne WI is sad to announce the death of **MARGARET THOMPSON**. A lifelong resident of Shipbourne, Margaret loved the WI and had been a member for many years and our President for much of that time. She is greatly missed.

Bearsted and Thurnham WI will sadly miss two long standing members **ROSEMARY SMITH** and **JOAN FAULKNER**. Rosemary was a committed member of the Art Group and in the past had made the costumes for the pantomimes. Joan was also a very committed member of the Craft Group and helped make our beautiful tablecloth which is still in use today. Our thoughts and condolences are with both families.

WHO TO CONTACT

CHAIR:

Amanda Breach

Email: chair@wkfwi.org.uk

Tel: 01892 823813

FEDERATION TREASURER:

Rita King

Email: treasurer@wkfwi.org.uk

01892 354454 Weds or Thurs

CHAIRMAN OF WI

ADVISERS:

Beverley Wild

Tel No: 020 8289 3533

Email: wiachair@wkfwi.org.uk

INDEPENDENT FINANCIAL EXAMINER

ADMINISTRATOR:

Gillian Neville

Email: gillian.neville@icloud.com

JOINT RESOLUTION

COORDINATORS:

Rosemary Tidby and
Thushara Kasturiratne

Email:
resolutions@wkfwi.org.uk

ACWW: Carol Gupwell

carolagupwell156@hotmail.com

Tel No: 01622 676600

SAFEGUARDING OFFICER:

Jeannette Smith

Email:

safeguardingofficer@wkfwi.org.uk

KENT VOLUNTARY EMERGENCY GROUP LIASON:

Diane Daniels

Tel No: 01622 674494

WEST KENT NEWS EDITORS:

Linda Wills

Tel No: 01474 834163

Janet Buller

Tel No: 01795 471713

Rita King

Tel No: 01892 354454

Keeley Smart

Tel No: 01892 823813

ARTICLES—YOUR EVENT

Articles, your events Please no more than 150 words and two photographs. Congratulations and Obituaries (no more than 40 words) . If possible email direct to westkentnews@wkfwi.org.uk If not please post to our Ethel Hunt Lodge address see top of page two.

The change over the last year in ordering tickets for Federation events has proved a success. However, due to the cost and reliability of the postal service, we propose that in 2025, we will accept ticket applications via email only. Tickets, when issued will be emailed to the WI representative in the normal way.

Please only order tickets via your nominated representative.

Should this create a problem, please do not hesitate to contact the office.

Ticket applications via email:

WI Reps Apply to: tickets@wkfwi.org.uk with your WI, Contact Name, Telephone number, event name, number of tickets required, date of event, and venue.

- Tickets are non refundable and non returnable.
- Places cannot be guaranteed until after the closing date.
- If an event is over-subscribed a ballot will take place.
- The Federation is not liable for additional costs or changes to a programme caused by circumstances beyond its control.
- Please apply for your tickets promptly, if an event is under subscribed by the closing date, the event may be cancelled.
- If open to non-members please state number required for members and non-members separately. Priority will always be given to members.