



theWI
INSPIRING WOMEN

WEST KENT WI NEWS

December 2022



Jacqui Robinson,
Halstead WI



Paula Bates
Nevill WI



Group effort from six
members of South Park WI

SEASONAL GREETINGS TO ALL OUR MEMBERS

*2pm Wednesday 7 December. Come and
sing at **CAROLS for CHRISTMAS***

ALL SAINTS CHURCH MAIDSTONE

*Doors Open 1.15pm – No booked ticket? You can
pay on the door £5.00 Open to Family and Friends*

VIEW FROM THE CHAIR



Well, Christmas is nearly here and already lists and plans are being made. Here at Federation, we are all looking forward to our Carols at Christmas at All Saints on December 7 and I hope to see many of you there resplendent in your Christmas jumpers ready to raise the roof with joyous singing!

I know that many of you have your own Carol services and lunches this month and I wish you well with all of them.

This year has been a different one for our family as my mum is now in a nursing home, so our Christmas will involve visiting her as she spends her first Christmas away from her home. When mum moved, we took on her elderly cat Gladstone (a very spritely 17-year-old tabby!) and from what I can remember he loves a Christmas Tree, especially the baubles, so I will be giving their placement a bit of thought this year! I will let you know how we get on!

One of the things I do at the start of December is look out my favourite Christmas films to watch during the month. It's a mix of old and new and are perfect for those dark evenings. So, I thought I would share with you a few and who knows they may become your favourites too!

Polar Express, White Christmas, Nativity 1&2, Robbie the Reindeer, The Holly and the Ivy, It's a Wonderful Life (well, you have to include this one don't you?).

Let me know what your favourite films are?

I would like to wish you all a very happy and healthy Christmas and to thank you all for the support you have shown the Federation staff, Trustees and Advisors over the year.

Merry Christmas from West Kent Federation and enjoy reading your West Kent News.

Take care,

Amanda Breach



Treasurer's Corner



You may already be aware that the November mailings from NFWI formally launched updated fundraising guidelines. The guidelines give more flexibility and removes unnecessary rules for WIs. This gives WIs (and federations) more flexibility to raise money for the charities that are important to them. They quote "We know this is an area of WI activity which is important to our members and where they would like to see a relaxation of the organisation's long-standing fundraising approach. This was particularly apparent this year with the Ukrainian crisis, which demonstrated that there are many WIs and federations who are keen to have more freedom to support international fundraising."

I am sure this is very welcome, there are still a couple of things that we cannot raise funds for and the document with all the information is available to download at <https://mywi.thewi.org.uk/running-your-wi/wi-finances/fundraising-guidelines>

There are also details of changes to the Charity Commission and these can be found in the link to the "Charity Commission" on the same page, WI finances. Details include the changes being introduced plus changes to the Charity Commission platform.

On another note, thieves have always been quick to spot opportunities in stealing money. They have become very clever in fooling even the most cautious and intelligent people. As we approach the first deadline for filing self-assessment tax returns the latest scam involves a text message from allegedly HMRC. I often watch programmes on crime and scamming people and their advice is that HMRC will never text you and ask you to click on a link, in fact the advice is never to click on any link but to go via official websites. It has also been advised that "number spoofing" is also prevalent in that you are fooled into thinking you are talking to a bona fide organisation with the number shown on your phone. It is sad that we must be so cautious but crime is not a new thing, just different and more convincing.

Have a good Christmas and a Happy New Year

Rita King

MEET YOUR TRUSTEE, 60 SECONDS WITH:-

Name: Geraldine Martin



WI and WI Credentials: : A member of Walderslade WI for over 50 years. Past Secretary and President a few times and currently Secretary. Also a member of the PA&I Sub Committee and a Trustee.

Hobbies / Interests: Reading, gardening and of course the WI (it keeps you busy).

Last book read: 'Becoming Michelle Obama'.

Favourite film: Just a couple of them 'Great Expectations' starring Sir John Mills, and 'The Holiday' (2006).

Music choices: : 60's Rock and Roll, The Hollies, some classical including Pavarotti

Most memorable holiday: : In 1948 when my father came out of the army after the war, he took my mother, brother and me to sandy Margate, no crowds then. It was lovely being a family again.

What do you love about the WI: Being part of the WI Community, the many friendships formed and the fun we have together over the years.

Marmite: Love it!

DATES FOR YOUR DIARY

DECEMBER

Weds 7 All Saints Church Maidstone

2023

MARCH

Mon 27 **Annual General Meeting** Tunbridge Wells

JUNE

10-18 Great Big Green Week

DECEMBER 2022 FEDERATION NOTICEBOARD

New Speakers

A big thank you to the PA&I sub-committee for hosting such a successful Speakers Audition Day on Saturday 17 September. The Federation are delighted to welcome the following speakers:

Eddie Asquith

Airline Pilot – In Full Flight

Tel No: 07511 672764

Email: eddie.asquith@outlook.com

Fee: £60

Margot Clarkson-Bennett

Make Up for Mature Women

Tel No: 07821 457651

Email: margot123@hotmail.co.uk

Fee: £60

Nick Gibson

Life in the Trenches in World War I

Tel: 07920 144064

Email: n.d.gibson@blueyonder.co.uk

Fee: £40 + travel @ 10p per mile

Clive Nutman

Madagascar—Enchanted Isle

Tel: 07913 347467

Email: clivenuttman@outlook.com

Fee: £50 inclusive

Paul Read

Reach for the Stars

Tel: 07946 758114

Email: misterpaulread@hotmail.com

Fee: from £95

Sarah Slater

Working with the Ghosts of Hampton Court Palace

Tel No: 07899 794308

Email: sarah.m.slater@btinternet.com

Fee: £100 + travel @ 45p per mile

Richard Winston

Wildlife Photography

Tel: 07963 869204

Email: richardpwinston@gmail.com

Fee: £60 inclusive (within a 10 mile radius)

Details of further talks on offer will be included in our new 'List of Speakers' which will be out soon.

Yearbook:

Page 14: **Hadlow WI** will now be meeting on the 4th Monday of the month at the Old School Hall, Hadlow TN11 0EH. The first meeting at this new venue will be 23 January 2023 starting at 7.30pm

*** PLEASE NOTE THE OFFICE
WILL CLOSE ON FRIDAY 23
DECEMBER AND
RE-OPEN ON TUESDAY 3
JANUARY 2023 ***

Thank you to everyone who submitted entries for the Federation Christmas Card Competition.

The three on the front cover were chosen to be printed and used by our Federation and have also been available for sale at Federation events.



Keep an eye out for the others as they are dotted around this publication.

ERITH WI Early in 2022, when the NFWI again promoted Walking Netball in partnership with England Netball, Erith WI registered their interest. We waited and waited. Eventually England Netball said they were hoping to recruit a Netball Development Officer for Kent, and would be in touch. Patience was wearing thin (I thought we would be on Zimmer frames before this project got off the ground) – but it was worth the wait when Rachael, the new NDO, came to Erith and viewed several venues with us, before settling on Erith Leisure Centre. Our first weekly session started on 3 November, with 14 turning up from Erith WI, Erith Veterans Club, Bexley Village WI (with trainer Irene), Nuxley Village WI and a few other eager ladies. It was great fun and good to be up and running (walking) at last. Chris Barry—Erith WI



CHIPSTEAD WI

To mark our 50th anniversary, we enjoyed a fabulous celebratory meal at The White Hart, Sevenoaks.



Our two founder members (Isobel and Irma) both now in their 90s, were at the dinner. Our current President, Christine Smith presented each of them with a gift to say thank you for the past 50 years they've both served within the institute. Before the meal took place Christine read out a few snippets from the minutes of the 1st meeting.

Scrapbooks and photographs were on display for members to look at and to reminisce over the previous five decades, bringing back memories of those from our fellowship who are no longer with us.



Each WI member received a little box with chocolates inside, which were sealed with a specially made sticker, each handmade by our Pins and Needles craft group members.



It was a joyous and memorable occasion.
Olivia Bridgen

GILLINGHAM WI

The Medway Towns has a long military history, with the Naval Dockyard, Royal Engineers and more. So it is with great pride that the Gillingham WI lay a wreath in Gillingham Park, in remembrance of those who gave their lives for us.



In 2021 we visited Bletchley Park, where we discovered how the pigeon played a great part in saving lives during WWII, so this year we are placing a pigeon on our wreath, who was beautifully made by one of our talented members.

My thanks to all our members who contributed to the knitting and sewing of the poppies and helped to

maintain the wreath.

The Gillingham WI would like to take this opportunity to pay tribute to our late Queen Elizabeth II, who we understand had a connection to the pigeons during the war. Never has a person touched the hearts of so many.
God bless the King

Julie Diamond



HARTLEY AFTERNOON

On 18 October we visited Downe House (run by English Heritage and home of Charles Darwin) nr Orpington, Kent, as a bursary outing using the remnants of a fund that we had as a result of a bequest left to us in her will by a long-term member. All agreed it was an afternoon well spent.

Gloria Bean



REPORT OF RECENT EVENTS

Christmas Flower Workshops

In good time for the holidays, our flower making tutor Sue Roberts came again to teach some Christmas flower arrangement workshops. 68 members enjoyed learning to make attractive decorations enhanced with sprays of berries.

We found on the second day at Snodland that the tutor was missing one of her glue guns. Would the members who attended the workshop on the first day at Ethel Hunt Lodge please look through their craft bags and see if you picked up this glue gun in error. If you have it please return to the Art & Craft Committee at Ethel Hunt Lodge or pass it on to any team member at a Federation event so that we can return it to the tutor.

Many thanks,

Paula Bates, Chair, Art & Craft Committee



Colourful pumpkin display sent in by Sheila Chivers who is secretary of **DOWNE WI**



EAST MALLING WI SPITFIRE LANDS

JANE'S

On our village green post box. It amazed passers by who couldn't resist taking snapshots, including uniformed officers. Our talented member Jane Barnard did us and our fallen servicemen and women proud as it appeared on time for Remembrance. You might even spot 'WI' on the fuselage. Our special troupe of knitters added a flourish of poppies across the green as a further mark of

REPORT OF A RECENT EVENT

PALS Annual WI Whist Day

On a lovely sunny autumnal morning, a lively group of WI ladies turned up at Sutton Valence Village Hall to play a fantastic day of partner whist. A few ladies had not experienced this day before, so after a little introduction from Sheila Miles, who was the adjudicator for the day, play began.



After a good morning of playing, we were treated to an appetising lunch of cheese and ham salad with all the trimmings, and to follow, we had a choice of flans and cream....all very delicious. Tea and coffee was also supplied, and after this we went back to playing whist again...everyone was feeling a bit less energetic!!



12 more games later, we added up the scores and an overall winning pair were announced, Actually it was a tie! With two pairs both achieving 198 points. From left Mary Allwood & Philippa Gartshore from Ightham WI. Centre Rita King Federation Treasurer who had presented the trophies then Janet Highwood and Margaret Quilliam from Frittenden WI. It was a very enjoyable day, and good way to get to know ladies from other WIs, as we kept meeting ladies again and again as we moved round the room if we won, or stayed put if we lost.



Thank you very much for a wonderful day, and in true WI style, there was a great raffle with lovely prizes drawn at the end of the afternoon.

Chris Gentry

PALS sub-Committee would like to thank the members from Sutton Valence WI, who came along and assisted our rather depleted team (too many people on Grandma duty) with arranging the hall and producing the lunch that

everyone enjoys.

We look forward to seeing everyone again, to play Whist, in 2023.



SOUTH PARK WI



The Craft group have been hard at work, covering milk bottle tops to construct some very colourful Christmas Trees

Once again South Park have adorned their local park fountain with 2,000 knitted and crocheted poppies.

Amanda Bird, South Park WI



SHOW THE LOVE – 14 FEBRUARY 2023



Let's start planning ahead to 2023 and thinking about how we can all support Show the Love campaign or Green Hearts as many of you may think of it. Show the Love coincides with Valentine's Day and uses the power of green hearts to ask politicians to tackle the climate crisis and protect what we love from its worst impacts.

We can all get involved with this, either on an individual level, through your WI crafting group or even getting all your members engaged. You could even spread the word further by organising an event in your local community. This could be a display in your local library or a crafting event inviting people to come and make their own green hearts. What's important in all this is starting the conversations about what simple steps we can all take to reduce our impact on climate change.

Resources to do all this will be available soon at [Show the Love](https://mywi.thewi.org.uk/interests/craft/show-the-love) and you'll find ways to create an impact through great crafting ideas on My WI <https://mywi.thewi.org.uk/interests/craft/show-the-love>

If you make a green heart, be sure to send it to your MP. Imagine the impact and message you are sending when loads of green hearts arrive in your MP's office. If you organise a larger event, you can invite your MP to attend or take a photograph and send it to them afterwards.

Many of you will have seen the Show the Love postcards that fall out of WI Life every year so look out for them again and send them off to your MP. We know that the WI is a force to be reckoned with so together we can send a forceful message to those in power that we want to see a greener, safer future for generations to come.

And lastly save the date for The Great Big Green Week, 10th - 18th June 2023, and get ready to take part in the UK's biggest ever celebration of community action to tackle climate change and protect nature.

MATFIELD WI had a wonderful evening seeing how Anne Boleyn dressed with Kate Marlborough Fletcher, who told us all about the fashions in Tudor times and how the fabrics were used many times with none of it being wasted.

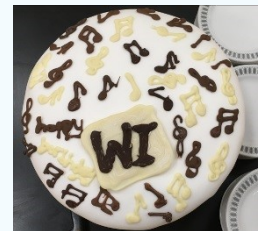
Chris Klempau
Matfield WI



HADLOW HIGHLIGHTS

On 18 October the Hadlow WI celebrated their 12th Birthday in style when the Green Street Blues Acappella Chorus came and entertained us for 45 minutes with their amazing singing! Songs through the ages from 1940 with 'A Nightingale sang in Berkeley Square', to 2014 with 'Make your own kind of music' and everything in between, ending with Happy Birthday and Jerusalem being sung to us. These ladies sang with passion and brilliance an eclectic repertoire with beautiful harmonies. I would certainly recommend them to come and sing at any special occasion you may be having!

Shirley Ellis Committee Member.



ART AND CRAFT

Paula Bates 01892 327863

artcraft@wkwfi.org.uk

CREATIVE MACHINE EMBROIDERY FOR BEGINNERS

Tutor:- Wendy Dolan

Wendy could only give us two days at this time as she is very busy and in demand so ticket numbers will be limited to members only. Depending on the response we will try to book her for more days later in the year so that those who miss out now will get an opportunity for this workshop. You will be learning how to 'draw' with your sewing machine, creating exciting patterns and textures with stitch. After practicing the techniques you will create a small landscape design. The background for this will have been prepared by the tutor.

Below is a list of equipment and materials needed for the workshop

SEWING MACHINE Any basic domestic sewing machine can be used for freehand machine embroidery. Please bring a darning foot and extension table for your machine, if you have one, and your sewing machine manual. Don't forget your foot pedal and lead!

EMBROIDERY FRAME *7 / 8 inch wooden is ideal **SELECTION OF SEWING THREADS**

Sylko, Guterman, Drima, *Madeira, etc.

Bring any you may have but think about colours for landscapes.

FABRICS *Calico, or firm cotton. Scraps or small pieces of lightweight fabrics e.g. silks, organzas, chiffons.

BONDAWEB *Small amount of Bondaweb/Transfer adhesive.

SCISSORS small embroidery scissors are ideal.

SPARE MACHINE NEEDLES (90 /14)

Available to borrow from the tutor

A few sewing machines and few darning feet. **Please state on your application if you would need to borrow a sewing machine**

8 inch embroidery hoop.

A selection of polyester threads

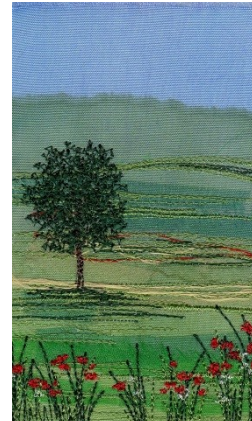
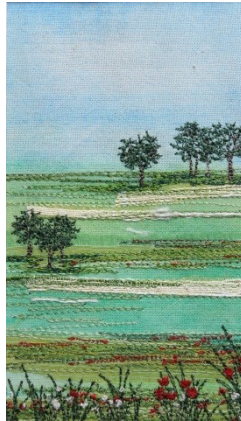
Available to purchase from the tutor

Calico fabric

8 inch embroidery hoops

Bondaweb

Madeira Machine Embroidery Threads



Thursday 2 March at Bowls Club Snodland ME6 5DP

Or Friday 3 March at St Peter's Church Hextable BR8 7RH

10:00am to 3:30pm. Doors open at 9:30am

Tickets £39 to include tea and coffee, Please bring a packed lunch and your own cup. Closing date for tickets is 27 January.

Apply to: Jenny Way, 27 Veles Road, Snodland ME6 5RB

Please include your details on a sheet of paper. WI, Contact Name, Phone number, email, number of tickets required, please state required date, or perhaps either would be suitable. If you would require to borrow a sewing machine.

Please include a suitably sized self addressed envelope.

Your WI will be invoiced on the monthly account for the number of tickets issued.

ANNUAL GENERAL MEETING

THE ASSEMBLY HALL, TUNBRIDGE WELLS

Monday 27 March 2023

11.00am to 4.00pm (doors open at 10.30am)

Closing date for first release applications: Monday 30 January 2023

SPEAKERS

Federation Archivists

The Federation Archivists Sheila Harris and Chris Klempau are looking forward to sharing with you some of the items that are kept at Ethel Hunt Lodge, some of which are over 100 years old! They hope to have a PowerPoint presentation so you will be able to see some of stored items. They will also give you an insight into what the job of an Archivist involves.

Rev Kate Bottley

The Reverend Kate Bottley is known to most of us as a TV personality. She is an ordained priest in North Nottinghamshire and is passionate about bringing stories of faith and belief to the widest audience possible.

Kate currently presents Good Morning Sunday on BBC Radio 2 alongside Jason Mohammed and is a regular presenter on Songs of Praise, The One Show, Steph's Packed Lunch, Sunday Morning Live and Sunday Morning Stories. She has appeared as a contributor on Saturday Breakfast with Dermot O'Leary and Pause for Thought on the Zoe Ball Breakfast Show, for which she won a Jerusalem Award.

She is married with two children and has a 10-year-old retired racing greyhound called Buster. Rev Kate loves dancing and "telly" – being a guest on Celebrity Masterchef.

ENTERTAINMENT

West Kent WI Choir

Our West Kent WI Choir will wake you up after lunch singing several songs.

The ladies have been working hard with Choir Master Michael Grant. They practice in two smaller groups, one meets in Southborough, the other in Orpington – together they will astonish.

DELGATES TICKETS ARE FREE and will be sent to all WIs automatically. The Delegate WI will be printed on the front of your ticket, **however Delegates are free to sit anywhere in the hall.**

NON-VOTING MEMBERS TICKETS including Group Co-ordinators and Federation Sub-Committee Members – Admission will be by ticket only at a cost of **£12.50 per ticket** and WI Secretaries should apply to the Federation Office for these by Monday 30 January 2023. Please base your request for Non-Voting Members tickets on the initial ratio of no more than **one per 10 members** in your WI. There may be a second release after the closing date.

**ADMISSION TO THE MEETING WILL ONLY BE ALLOWED ON PRODUCTION OF A TICKET
TICKETS ARE SOLD ON A NON-RETURNABLE, NON-REFUNDABLE BASIS**

NFWI ASSOCIATES are entitled to apply for one ticket at a cost of **£12.50**. If you would like to attend, please contact the Federation Office.

COLLECTION

We will be collecting for St Mark's Community Larder in Tunbridge Wells and would be grateful for any non perishable donations. If your WI would like to make up **one** bag of items – a strong bag for life could be used, maximum size 18 x 15 x 8 inches. This is a voluntary collection and WIs can participate if they wish.

CLOSING DATES

Monday 30 January 2023
Monday 30 January 2023
Monday 30 January 2023
Monday 27 February 2023
Monday 27 February 2023
5pm

First release ticket applications need to arrive by post or email by 5pm
RHS Wisley Draw applications
Bursary applications
Receipt of stationery orders to be collected at the AGM
Second release ticket applications need to arrive by post or email by 5pm

Full details are available via your WI Secretary.

HIGHGATE HAWKHURST WI



Thirty-six ladies from Highgate Hawkhurst WI enjoyed an educational and inspirational day at The Royal Hospital, Chelsea on October 18. Guided by our 'men in red coats', we toured the grounds and significant rooms in the building learning about its history and the lives of the gentlemen, and now ladies, who live therein. We also viewed the grave of Lady Thatcher who was a major benefactor of the hospital, had lunch at the National Army Museum and enjoyed a little retail therapy on the King's Road. As a token of our

appreciation we took homemade bakes to be distributed amongst the 300 or so pensioners who live at the Royal Hospital. Our trip was funded from our own coffers and is one that we highly recommend!

Rachel Fagg

HOLLINGBOURNE WI

On 22 October we held our annual fund raising Barn Dance in the village hall. The caller was John Sweeny with his wife Karen, who gave help, and joined in, with the dancing.

We had a good attendance after the necessary cancellations of the last two years and there was much merriment among the enthusiastic dancers.

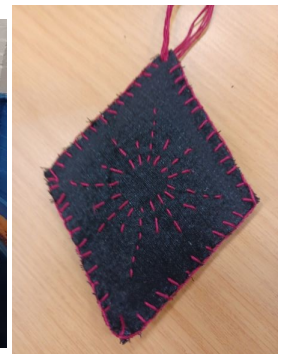
Our next social event will be the Christmas party in December.



Barbara Gibbs

ST MARY'S WEST WICKHAM had a lovely evening with Cleaner and Greener, the Bromley based environmental charity who run The Hub in the Glades Shopping Centre. Our evening was entitled "I'm dreaming of a Greener Christmas and we learnt about ways to have a more sustainable festive season- including food, gifts, decorations and wrapping. We then made our own upcycled tree decorations using denim.

It was an inspirational evening. Nicola Secretary



Members of **BOUGHTON MONCHELSEA WI** and their husbands had a guided tour around the Biggin Hill Memorial Museum to see their very interesting exhibition on Women in the War. Hats of the time were tried on and it was noted that WIs knitted socks for the troops and also provided "tea and sympathy".

An excellent day out, thanks to Marilyn Berry for organising.

Anthea Springett

RHS Wisley Draw

As a Federation we are Associate Members of the RHS which entitles us to 50 tickets for a visit to RHS Wisley. If your WI would like to enter into the draw for these tickets, which will be held at the AGM on Monday 27 March 2023, please complete the entry form.

Remember, this is for a ONE group visit of up to 50 people and you are welcome to include members from other WIs to use all the tickets. The tickets will show the 'shelf life of the offer' usually the current year and you will have to arrange your own transport. This would be deemed an educational item and your WI could pay transport costs.

Applications can be submitted either by using this form or by letter or email. Please make sure that all the information requested on the application box is included: WI, Contact Name, Address and Postcode.

West Kent Federation of Women's Institutes

WISLEY TICKETS

Please submit only one WI application – thank you

Yes WI

would like to be included in the annual draw for tickets to visit RHS Wisley No transport is included in this offer

Contact Name

Address and Postcode.....

.....

Phone.....

Email.....

Apply to: FedSec@wkfwi.org.uk

or to the Federation Office at Ethel Hunt Lodge clearly marked 'Wisley'

Closing Date: Monday 30 January 2023

WEST KENT FEDERATION OF WIS

2023 Annual Bursary for Education in any subject

Please submit only one personal application – thank you

either on this form, email or letter

WI

Name

Address

.....

.....Postcode

Tel No

Email

Apply online to: Geraldine Martin

Email: ghoganmartin@gmail.com

or to the Federation Office at Ethel Hunt Lodge clearly marked 'Bursary'

Closing Date: Monday 30 January 2023

ELTHAM PALACE WI

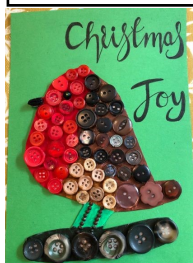
Eltham Palace WI was going to celebrate its 10th Birthday in style. Unfortunately, a very different visitor arrived Covid!!

Everything went on hold, until Sat 15 October at 3pm. Our ladies met at the Bromley Court Hotel to have afternoon tea.

We all had a wonderful time and one lady was celebrating her 80th birthday with us all. The ladies thoroughly enjoyed the tea and it was only two and a half years late!

Roll on the next seven and a half years to celebrate our 20th year

Pam Galloway





OBITUARIES

Aperfield WI is sad to report the death of **BETTY WHITE**, a member for over 20 years until ill health prevented her from joining us. She was a conscientious and hard working Secretary for over 10 of those years, organising outings, activities and events, including our 90th Birthday lunch. Our thoughts are with her family.

It was with sadness and shock that **Pembury Evening WI** heard of the death of our member **BARBARA COLSTICK** who died in hospital after a short illness. She had been a member for over 35 years and had served on the committee. She will be missed and our thoughts are with her family."

Members of **Fairfield (Dartford) WI** were saddened to hear of the sudden death of **JEAN DYKE**. She had been an active WI member for 19 years and was a former committee member and president. She was also the hard-working co-ordinator for the Temple Hill Lunch Club which **Fairfield** runs for older people in our community. Our thoughts are with her family.

Chipstead WI members are sad to report the death of **IRMA GODDARD**, aged 90, a Founder member. Irma took on so many roles over the years and gave 100% to the WI. She excelled at all forms of craft, needlework, drama, whist and elaborate cake decorating, and generously shared these skills with us. Although having acute health problems recently, she was so happy to be able to come to our 50th birthday celebrations in October and despite much pain, she stood up to give us a little speech of appreciation. We will all miss her very much.

With great sadness **Hollingbourne WI** announces the recent death of **ELSIE PACK**. Elsie was a very longstanding and loyal member of our WI. She took part in the WI's first presentation of 'The Good Old Days' in the Village Hall and supported all our activities over the years. She will be sadly missed.

The ladies of **Boughton Monchelsea WI** were shocked and saddened to hear of the sudden death of our dear Treasurer and friend **HEATHER KIRKPATRICK** who died on 12 November 2022. Heather was a very popular and much loved member of our WI and an amazing Treasurer. She was well known for her crafting skills, particularly her quilting, and her beautiful cards which she made for the special birthdays of our members. She organised our Dining Out club each month and was an active member of the Book Club. She will be sorely missed by us all.

We were also very sorry to hear of the death of **KAYE MOORE** following a short illness. Although unable to attend meetings because of ill health, Kaye was a very supportive member of our WI, stepping up to become a joint president when we were in danger of folding for which we were very grateful. We will miss her.

YOUR WEST KENT NEWS

To enable WIs to receive their ordered copies of the WKN by the first of the month and for it to displayed on the website earlier you may find some of your articles will feature in the following month's edition rather than the next month. All items will follow in the sequence that they are received.



Hartley Afternoon WI sends congratulations to **MARION SMITH** and her husband **ALAN** on the occasion of their Diamond Wedding Anniversary which they celebrated on 8 October .

Members of **Allington Castle WI** send congratulations to **DIANE** and **MIKE BLABER** who celebrated their Golden Wedding Anniversary on 16 September.

The 'Old' West Kent News Team send love and best wishes to **CONNIE** and **HILARY NEWMAN** as they celebrated their Diamond Wedding on 10 November. We miss our WKN monthly meet ups Connie.

WHO TO CONTACT

CHAIR:

Amanda Breach
Email: chair@wkwfi.org.uk
Tel: 01892 823813

FEDERATION TREASURER:

Rita King
Email: treasurer@wkwfi.org.uk
01892 354454 Weds or Thurs

CHAIRMAN OF WI

ADVISERS:

Mrs Carol Gupwell
Tel No: 01622 676600
Email: carolagupwell156@hotmail.com

INDEPENDENT FINANCIAL

EXAMINER ADMINISTRATOR:

Gillian Neville
Email: gneville@live.co.uk

RESOLUTION COORDINATOR:

Caroline Davis Email: daviscaawkf@gmail.com

ACWW: To be advised

KENT VOLUNTARY EMERGENCY GROUP:

Diane Daniels
Tel No: 01622 674494
Jill Fissenden
Tel No: 01622 758251

WEST KENT NEWS:

EDITORS

Mrs Linda Wills
Tel No: 01474 834163
Mrs Janet Buller
Tel No: 01795 471713
Mrs Rita King
Tel No: 01892 354454

ARTICLES—YOUR EVENT

Articles, your events Please no more than 150 words and two photographs. Congratulations and Obituaries (no more than 40 words) . If possible email direct to **westkentnews@wkwfi.org.uk** If not please post to our Ethel Hunt Lodge address see top of page two.