



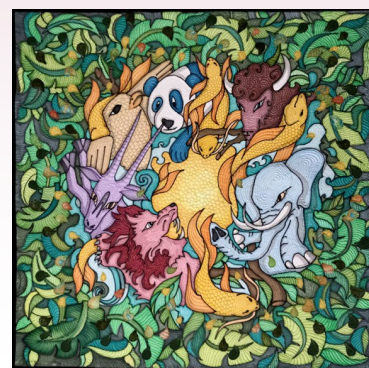
# WEST KENT WI NEWS

September 2021

## Art & Craft Annual Days

The following will be speakers at our Annual Art and Craft Days

Pascale Michalski. From Painter to Quilter



Rosie Geiger. TV Producer on the Great British Sewing Bee

Matthew Palmer. Watercolour Artist



## Wednesday 6 and Thursday 7 October

DITTON COMMUNITY CENTRE, KILN BARN ROAD,  
AYLESFORD ME20 6AH

Start 10:30—3:30 pm / Doors open 9:30 am

Tickets £10 to include tea/coffee. Please bring your own cup.

Non-members are welcome but priority will be given to members.

There will also be our trade stalls : Our well known Bring & Buy, Rainham Sewing for lovely fabrics, sewing essentials and craft making items, Search Press art and craft books, hand crafted silversmith jewellery, paper flowers and beautiful wood turned items .

Application form on Page 4

## CHAIRMAN'S LETTER

Dear Ladies,

I am writing this very early in August so I hope everything goes to plan with the rest of opening up after lockdown!

I have started seeing WIs in the flesh so to speak, it is great to be able to talk to you. I hear many WIs are now meeting or plan to do so in September. Thank you also to the WIs who have sent in their Subs - very gratefully received.

Now I have been hearing that some WIs have been "bullying" the WI Advisers when they attend a WI to help with their AGM. Please be kind to the WIAs - they, like the Trustees, are VOLUNTEERS who do the job because they like it not because they are paid. Later on in the WKN I have written an article regarding who does what at Ethel Hunt Lodge. I think you will be amazed how many Ladies give up their time to help the West Kent Federation to run. If there are Ladies out there that would like to help us in any shape or form contact me through the Office we would be very grateful.

How have you spent the summer? We would like to hear. In the past two weeks I am afraid most of my spare time has been used to watch the Olympics. As a family we are mad about most forms of sport.

By the time you read this I would hope we have a new phone system in place at EHL so please bear with us if there is trouble getting through to start with. We are having a new entry door system put in as we were not happy with the staff working there, sometimes on their own. So we are moving out of the ark into the 21<sup>st</sup> century!

Best wishes

Jane Backshall



## Treasurer's Corner



I recently had to phone the bank as they had credited two cheques with differing amounts to what we thought they should be. On looking again at the cheques they agreed with us because the written amount tallied with what we had said.

The issue occurred because as the bank put it "bad figures in the box", which were misread by the image scanner.

The customer service adviser made the following points to help when writing out cheques:

- Try to be very precise with the figure work – It is the figures that are initially taken as the amount. These days the majority of cheques are image scanned and will not be checked manually to make sure that the written and figure amounts agree.
- Cheques are generally only manually looked at when a customer phones and queries a discrepancy.
- If a mistake is made remember to initial any change on the cheque;
- However, the adviser did say if a mistake is made on the payee line it is best to start again with a new cheque.

I have been guilty myself of not always being clear with figure work on cheques but do now make the effort to be more careful!

A last thought for those of you who are not doing so but it might be worth considering moving over to on line banking. It does make payments much easier and more efficient.

Finally just a couple of words on Zoom talks going forward. Up till now there has been no charge for these. After 1st October members will be charged £5 to participate in Zoom talks although there will be odd exceptions where they will still be free and it will also not cover networking events such as the one I am planning for Treasurer's in the Autumn.

The £5 cost is in line with charges by Denman and other Federations for their online events. The Zoom talks will be accessed through a platform called TryBooking, used by some other Federations.

On page 10 is an article which hopefully will tell you all you need to know about the TryBooking platform and how to book tickets

*Gillian Neville*



## Green Team

greenteam@wkwfwi.org.uk

**On Thursday 21 October at 7.30pm we will be spending time with Alex Green from the climate solutions charity, Ashden.**

Alex leads their schools programme across the UK. Their national schools campaign, Let's Go Zero is uniting UK schools working to cut their carbon emissions to zero by 2030. That's a huge challenge – but transforming our schools will help safeguard the planet for future generations. Alex will talk about the campaign and the role of schools in the climate crisis and how schools are becoming part of the movement for change that is helping communities take climate action.

These talks are free to members and booking details will be available nearer the time. **So keep a look out in your mailboxes!**

**'Small changes make a big difference!'**

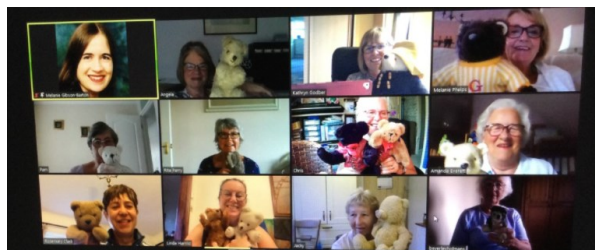
### **Be a greener shopper**

1. Take your own bags and containers with you when going shopping. Hard to remember? Keeping a bag in the car or your handbag helps enormously.
2. Many shops including supermarkets will place purchases such as meat and fish into your own clean containers if you ask.
3. You can leave behind unwanted plastic wrapping on your purchases at the supermarket which helps remind them that we don't see it as necessary.
4. Try to support your local producers by visiting farmers markets and farm shops, and seek to buy what is in season.
5. Don't just check the sell by date on food products, but see how far they have travelled.
6. Investigate refill stations and shops in your area. Look online to see what is available near you, their numbers are rapidly increasing and aren't just to be found in urban centres.
7. Explore options for buying household items such as loo rolls in bulk from companies that don't use plastic packaging. Find friends or family to share the purchase with.
8. Study clothing labels to see if they say they have been ethically/sustainably produced.
9. Consider renting an outfit for a special occasion rather than buying something.
10. When buying greetings cards and wrapping paper look out for items that don't have an outer wrapping made of plastic but instead have one made from corn starch or better still no outer covering at all.
11. Finally persuade your WI to invite the manager of a local supermarket to come and explain what their company is doing to reduce the amount of plastic packaging they use, and hear what you want to see changed.

#### Matfield WI

For our August meeting, Melanie Gibson-Barton talked to members via Zoom about the history of Teddies and other bears. As you can see, we were joined by several furry friends who were on their best behaviour throughout Melanie's talk.

Sheila Harris



#### DATES FOR YOUR DIARY

SEPT	18–26	Great Big Green Week	Your Events
SEPT	Tues 21	Ben Cross	Zoom Talk
SEPT	Thurs 23	Daniel Webb Everyday Plastic	Zoom Talk
OCT	Weds 6	Art & Craft Annual Day	Ditton
OCT	Thurs 7	Art & Craft Annual Day	Ditton
OCT	Thurs 21	Alex Green Everyday Plastic	Zoom Talk
NOV	Tues 2	Annual Whist Day	Ryarsh
NOV	Thurs 4	Annual Whist Day	Lenham
NOV	Tues 16	Ingrid Jansen	Zoom Talk
NOV	Fri 19	Murder Mystery	St. Mary's Platt
DEC	Wed 8	All Saints Church	Maidstone
MAR	Mon 21	AGM	Tunbridge Wells

All activities subject to any change in Covid restrictions.

## Art & Craft Annual Days

**Wednesday 6 and Thursday 7 October**

DITTON COMMUNITY CENTRE, KILN BARN ROAD, AYLESFORD ME20 6AH

Start 10:30–3:30 pm / Doors open 9:30 am

Tickets £10 to include tea/coffee. Please bring your own cup.

Non-members are welcome but priority will be given to members.

**If your WI is not meeting before the closing date—PLEASE APPLY INDIVIDUALLY FOR YOUR TICKETS WITH A SAE TO YOUR HOME ADDRESS, DO NOT APPLY THROUGH YOUR WI. Your WI will be billed for the cost of your tickets.**

The following will be speakers at our Annual Art and Craft Days

### **Pascale Michalski. From Painter to Quilter**

**Pascale** was born in the small country of Luxembourg. She is 36 years old and has lived in the UK for over 16 years. Since a very young age she has always drawn and painted and was never afraid of venturing into new creative territories. She will be talking to us about her journey from "*Painter to Quilter*", she will showcase some of her pieces and tell us all about her technique and how it is still evolving. She has won several awards at quilt shows and textile competitions and also attends shows internationally.



### **Rosie Geiger. TV Producer on the Great British Sewing Bee**

Rosie has worked on the show since series 2 and now works closely with judges, Esme and Patrick, to devise new and exciting challenges for the series and to produce them in the Sewing Room. In her talk she will share her experience of working on the show, from casting the talented Sewing Bees to filming them. She invites the audience to ask any questions in a Q and A at the end.

### **Matthew Palmer. Watercolour Artist**

No.1 selling author, art tv host and professional artist Matthew Palmer will be demonstrating watercolour in a lively and entertaining way. Matthew will demonstrate some different and interesting techniques. Matthew has been teaching and demonstrating watercolours for over 20 years, holding workshop days, lessons and painting holidays up and down the UK. He works closely with the SAA (formerly Society for all Artists), developing unique products, Matthew has his own branded range of art materials. He has had published 5 art books including the number 1 best selling 'Watercolour for the Absolute Beginner'. The host of Sky TV's 'A Splash of Paint', 'Paint Along With', a regular presenter and artist on The Craft Store, TV's best art and craft channel. Matthew also has a popular YouTube channel with over 50,000 subscribers and videos with well over 1 million views. He is also the presenter on Watercolour.tv an on-line based art tuition show ([www.watercolour.tv](http://www.watercolour.tv)).



There will also be our trade stalls : Our well known Bring & Buy, Rainham Sewing for lovely fabrics, sewing essentials and craft making items, Search Press art and craft books, hand crafted silversmith jewellery and beautiful wood turned items .

## Art & Craft Annual Days

Wednesday 6 and Thursday 7 October 2021. 10:30 am to 3:30 pm. Doors open 9:30 am

Tickets £10 to include tea/coffee on arrival and at lunchtime. Please bring a packed lunch and your own cup. Non-members are welcome but priority will be given to members.

WI:..... Contact Name:.....

Address: .....

Tel No:..... Email:.....

No. of tickets required      **6 Oct** Members .....Non-Members..... **7 Oct** Members .....Non-Members.....

Apply to: Jenny Way, 27, Veles Road, Snodland ME6 5RB. Telephone 01634 241791

**Closing date: Friday 17 September**

PLEASE ENCLOSE A SUITABLY SIZED STAMPED ADDRESSED ENVELOPE

Your WI will be invoiced on the monthly account for the number of tickets issued.

Sarah Sudlow—[sarahsudlow300@gmail.com](mailto:sarahsudlow300@gmail.com)

## **Decluttering: Organise your house!** **With Ingrid Jansen**

**Tuesday 16 November at 2.30pm on Zoom. Tickets £5**

Ingrid is a professional organiser and declutter expert. She has been featured in many magazines and newspapers and is one of the hosts of the successful The Declutter Podcast.

Booking for this paid event will be through "TryBooking". The link will be displayed in either the October or November WKN



**Tuesday 21 September at 6:30m on Zoom - Free Talk**

## **"British Flowers Rock"**

**Alstroemeria Ben**



Ben is a 4th generation grower at Crosslands Flower Nursery which was established in 1936 in West Sussex and is one of the last flower nurseries producing cut flowers in a full colour range all year-round.

Ben's British Alstroemeria is a very sustainable crop. His flowers are not sprayed with any chemicals after being harvested and go into recyclable, reusable boxes and arrive with customers the next day. No soil cooling techniques are used to force

production and some flower beds are over 20 years old, still producing premium quality stems. Under 5% of the crop is replanted a year so sterilizing the soil is kept to a minimum.

The British Alstroemeria is known as a 'Cool Crop' and a 'Dry Crop' so doesn't take much heat input or watering. Optimum heat at night through the winter is just 13°C via a biomass boiler and the crop is watered for just 20 minutes once a month in the winter and just 20 minutes once every 10 days in the summer unlike flowers grown in warmer countries that use a lot more water resource.

When Ben's flowers have been picked they don't go into big freezers, the cooling storage system at Crosslands is usually turned off between November and March. When the flowers need to be stored in warmer weather they're only chilled at about 6°C instead of 0.5°C like most imported flowers. They are only stored for a couple of days before they are with the customers. They are a lot fresher than flowers that go all around the world. Most importantly all the stems are harvested at a 'ripe' big fat bud stage giving a bigger more vibrant flower unlike the imports that are harvested too tight in bud just so that more can be transported in boats and planes.

Ben also only employs local people and more importantly does apprenticeship schemes with local horticultural colleges and goes into floristry colleges to give his British Flowers Rock Talks

Next to being a fulltime grower, Ben is an avid campaigner for British Flowers and takes any opportunity he can to spread the word that British Flowers Rock!

Ben won the Grower Award in 2019! And won the Gold Sussex Environmental award in 2020.



Ben donated his blooms to St Richards Hospital and West Sussex care homes during the COVID 19 lockdowns.

You can buy Ben's flowers by contacting him on his social media channels - twitter and Instagram @alstroemeriabben and on Facebook at Crosslands Flower Nursery.

Booking through "TryBooking". Once you have booked you will be sent a link for the event. Link to TryBooking: <https://www.trybooking.co.uk/BFNJ>

If you require any assistance please contact [fedsec@wkwfi.org.uk](mailto:fedsec@wkwfi.org.uk) or 01892 823813



GILL BROWN 01732 850571 pals@wkwfwi.org.uk

## WHIST DAYS £12.00

**Tuesday 2 November**

**At Ryarsh Village Hall, ME19 5LS**

**Thursday 4 November**

**At Lenham Community Centre, ME17 2QT**

11am—4pm (Doors open at 10.30 for registration and tea/coffee) Ticket includes lunch—members only.

Our Whist Days, with Ploughman's lunch and dessert, are always popular. We look forward to welcoming many familiar faces and hopefully there will be some new players attending. You do not have to attend as a pair, single players are welcome and you will be put with another solo member. Play will commence at 11am sharp, Sheila Miles will be on hand to oversee the play and answer any queries.

When applying for tickets please let us know of any special dietary requirements—with that member's name.

If you can attend either day please tick that line on the application box.

**Closing date 30 September**

As this is being written Covid restrictions are being lifted so, we hope that all will still be well to greet you all in November.



PALS Sub-Committee

## WHIST DAYS

**Tuesday 2 November at**  
Ryarsh Village Hall, ME19 5LS

**Thursday 4 November at**  
Lenham Community Centre,  
Groom Way, ME17 2QT  
11am—4pm (Doors open at 10.30 for registration and tea/coffee) Ticket £12 includes lunch—members only.

WI.....

Contact Name.....

Address:.....

.....

.....Post Code.....

Telephone No.....

Email.....

No. of Tickets 2 Nov.....4 Nov.....

Either date.....

**Dietary requirements on a separate sheet please with name/s.**

**Apply to:** Gill Brown, 20 Appletons, Hadlow, Tonbridge TN11 0DT Tel:01732 850671 or 07703 359529 pals@wkwfwi.org.uk

**Closing date 30 September**

please enclose a stamped addressed envelope  
Your WI will be invoiced on the monthly account for the numbers of tickets supplied.



## PUBLIC AFFAIRS & INTERNATIONAL

Caroline Davis—01892 725571 Carol Gupwell—01622 676600

### NFWI RESOLUTION 2021

*"Every two hours in the UK someone dies of ovarian cancer. Making sure GPs and the public know what to look for will not only ensure the early detection and treatment of this disease, but transform lives today and for generations to come. NFWI calls on WI members everywhere to help increase awareness of the subtle signs of ovarian cancer."*

99.48% of WIs voted to approve it. So now the work must begin. If we are urged to increase the awareness of the subtle signs, then we need make sure we are familiar with the symptoms.

**The symptoms of ovarian cancer include:**

**feeling constantly bloated; a swollen tummy; discomfort in your tummy or pelvic area;  
feeling full quickly when eating; and/or loss of appetite; and needing to pee more often than normal.**

If you have any of these symptoms more than 12 times a month, you should ask your GP for a blood test to check for ovarian cancer. Since we started this discussion, I know of two personal friends who have recognised the symptoms, had the blood test and been given the all clear. Caroline Davis—Joint Chairman PA&I

**If you have an idea for a future resolution, do contact our Resolution Adviser—Annette Smith  
email: kimbersmith127@gmail.com**

P

A

L

S

GILL BROWN 01732 850571 [pals@wkfwi.org.uk](mailto:pals@wkfwi.org.uk)

# MURDER MYSTERY EVENING

THE MEMORIAL HALL

PLATINUM WAY, ST. MARY'S PLATT TN15 8FH

FRIDAY 19 NOVEMBER

7.30pm – 10pm (Doors open 7.00pm)

Tickets £10 – open to family and friends

PALS invites you to an evening of mystery and intrigue – will you solve the mystery and be able to name the murderer of the poor unfortunate victim? The performance by *Alternate Shadows* will give subtle hints, but are they red herrings, can you sort out the real truth from the many clues offered?

We would ask you to bring your own refreshments this evening, but there will be coffee/tea on arrival and also, in the second interval, which will then be accompanied by seasonal items.

**Closing date for applications Thursday 30 September.**

Your WI will be invoiced on the monthly account for the number of tickets issued.

POLICE LINE DO NOT CROSS POLICE LINE DO NOT CROSS

## MURDER MYSTERY EVENING

THE MEMORIAL HALL

PLATINUM WAY, ST. MARY'S PLATT TN15 8FH

FRIDAY 19 NOVEMBER

7.30pm – 10pm (Doors open 7.00pm)

Tickets £10 – open to family and friends



WI..... Contact Name:.....

Phone Number:..... Email: .....

Address.....

No. of Tickets req. Members: .....Non-Members: .....

Please apply to: Mrs. Gill Brown, 20 Appletons, Hadlow, Kent TN11 0DT

01732 850571 Email: [pals@wkfwi.org.uk](mailto:pals@wkfwi.org.uk)

**Closing date for applications: Thursday 30 September .**

Your WI will be charged on the monthly account for the number of tickets issued.

The Bowls Taster afternoon at Horton Kirby Club was a great success! 16 ladies turned up to have-a-go. Our afternoon started with a short talk by the Secretary, which was both informative and helpful to us



novices, especially the tips for choosing the right size 'wood', commonly known as a bowl! We were then divided into groups of 4 along with some very helpful and encouraging members of the club to help get us started. After a bit of practice at rolling our 'woods' down the green towards the Jack, also commonly know as the white ball! it was then thought that we were proficient enough to play an actual game, so then 4 became 8 and challenged the other 8 ladies to a game. We ended the day in sunshine enjoying

the cream tea that had been laid on by our Hosts. A very enjoyable occasion and one I hope that will be repeated!





## West Kent Federation WI bursary

My Hungarian Vizsla puppy called Zoltan (meaning 'Life') is just over 6 months old and is a whirlwind of fun. We've built a great bond and are really enjoying making new friends and finding places to explore together. I was delighted to receive a West Kent Federation WI bursary which has enabled me to take Zoltan to gun dog training; opening up a whole world that I never knew existed. I am continuing with fortnightly lessons to develop my skills as a 'pet' gun dog handler as there is so much to learn; using a whistle, arm/hand signals, dummies etc. Walks are never dull!! I have no intention of using him on a shoot but as he is a hunter, pointer, retriever breed I would like to tune into his natural abilities with scent/retrieving work and make our time together as interesting as it can be. Life is very busy at the moment and to be honest I've not had a lot of time to crochet, but loving every moment. Thank you WI.

Leona Sanders, **St Mary's West Wickham WI**

**South Park WI** have been very busy since some of the restrictions have been lifted.

Our virtual coffee mornings turned into outside ones raising money for



our local charity Dandelion time. The walking group, book group and lunch club have restarted. Craft group have met in the garden with the help of glorious sunshine. We held our first meeting in our name sake park with games, tea and cake. We had an outing to Riverhill Himalayan gardens and were joined with several members of Boughton WI. A good day was had by all. It's so good to be together again. Yesterday's walk was along the river on the Elmer trail!

## FRINDSBURY WI

We had a social meeting on Church Green, Frindsbury on 14 July, with delicious homemade cakes and a book sale, as due to Covid restrictions we could not meet in the Parish Hall. The Green overlooks Rochester and the River Medway, so we had views of Rochester Castle, the Cathedral and the Rochester Bridge as the backdrop.



Carrie Inge,  
Secretary  
Frindsbury WI.

## Hadlow Highlights

Early in July, Shirley and Alison took up the invitation to try Paddle boarding at Mote Park. In one hour they succeeded in going from kneeling to standing and both managed to not fall in the water! July 20 was our first face-to-face meeting inside for our members at our new venue Hadlow Village Hall. On arrival members were welcomed with a glass of wine/soft drink and nibbles, proceeded by the AGM, tea, cake and an opportunity for members to 'show off' to the rest of us what they had been up to during lockdown. Carol had been busy making various garments, Jenny had taken part in several Denman courses, but the star of the show was Mary our in house crafter who has maintained a scrapbook throughout the last 15 months detailing all and everything we had done as a WI, absolutely brilliant!



Shirley Ellis  
Hadlow WI

Summer 2021 saw a return of Burham and Wouldham WI annual fund raising event in June Jordan's lovely garden. The sun shone and the tea cups rattled as members and guests mingled on the terrace. It was a delight to welcome members back together after the drought of meetings during 2020 and the first half of this year. We were pleased to see visitors talking to our established members and hope they will appear at our regular indoor sessions in the autumn.

Our Federation chair Jane Backshall joined other ladies on a wildlife walk through the garden, orchard and meadow where numerous butterflies and insects flourish. Butterflies and moths- peacock, common blue, admiral, gatekeeper, fritillaries, six spotted burnett, cinnabar moth and even green hairstreak.



Insects - grasshoppers, soldier beetles, different types of bees, woodlice and earwigs. Then it was a rush to draw the raffle before the heavens opened and everybody departed full of cake but perhaps a little damp from the downpour.

Heather Brown Burham and Wouldham WI



TRICIA ASHDOWN

ACWW

triciaashdown@yahoo.co.uk

**The Women Empowered Fund** of the Associated Country Women of the World helps to empower women by funding small-scale, women-led projects in rural areas. ACWW works with their own grassroots Member Societies around the world, and with local partner organisation, that collaborate with beneficiaries to create and implement projects.

Each year West Kent Federation supports the WE Fund and this year we are supporting ACWW projects that deal with Sustainable Water, Sanitation & Energy.

When you donate to this Priority Focus Area you support projects that promote:

- Access to water
- Water conservation and security
- Improvement and access to sanitation facilities

Project 1018 is an example of a Sustainable Water and Sanitation project, and was successfully conducted by ACWW's partner organisation Women's Action Against Climate Change and Hunger. The project brought safe water and sanitation facilities to women in poor neighbourhoods of the Philippines. Two rainwater harvesters were constructed which serve 311 households. In addition 50 latrines were constructed for women-led households providing better sanitation and safer facilities for these women and their families.

As well as the water and sanitation facilities, backyard gardens have been established and 220 women and their families are participating in home gardening. They have been trained to grow vegetables and fruit using local seed varieties.

ACWW is very grateful to their membership and supporters globally for their donations to Pennies for Friendship and Projects funds.

This year money sent to West Kent Federation for ACWW is understandably down on previous years so any donations will be most appreciated and will be helping to improve the lives of women in the poorest countries.

Tricia Ashdown. ACWW Rep



A beneficiary of Project 1018 and her daughter standing in front of one of the new latrines.

## WHO EXACTLY IS "THE FEDERATION" and

### WHO DOES WHAT WITHIN IN IT?

Many people consider the Trustees as the "Federation" but in fact the Federation is made up of all of us. Just as in your WI, volunteers come forward for the committee and if necessary, you have an election to decide who will actually be on the committee. Similarly, volunteers offer to be Trustees and if necessary an election is held to choose the correct number.

The Trustees take on the responsibility of the running of the West Kent Federation. They have appointed three paid employees – Miriam (Miz) McGovern our Office Manager, Keeley Smart, our Systems Administrator (or IT whizz kid!) and Alan Whiteley our Bookkeeper. Alan works on Tuesdays and Wednesdays but Miz and Keeley are at the office on Tuesday through to Friday.

**Everyone else is a volunteer.** This includes the Chairman, Treasurer, the Trustees and the WI Advisers. The Trustees co-ordinate the sub-committees or groups – Art & Craft, Lifestyle, PALs and PA&I. These groups, which are made up of more volunteers, organise event days, Zoom talks, competitions etc.

The Advisers open new WIs and sadly suspend others. They organise training for new and existing Presidents, Treasurers and Secretaries. Advisers are trained by National Federation (NFWI) on all aspects of running a WI.

There are currently two ladies who are the Federation Archivists who keep all of our past Federation and WI records in order.

Finally we have a team of ladies who produce our new in-house West Kent News to bring you the latest information.

There are some less visible tasks to be done such as managing the Covid restrictions, rewriting the constitution after becoming a CIO, maintaining the building at Ethel Hunt Lodge and the Car Park.

We are the link between the NFWI and WIs. Our role includes processing, interpreting, disseminating and implementing the NFWI policies as well as administrating, ticketing and organising accommodation for the NFWI Annual Meeting.

There is a lot that goes on within the Federation. Maybe you have some skills that you would like to offer to assist in the running of the whole show. Please speak to one of the Trustees or phone the office if you think you could help in some way with the running of **OUR FEDERATION**.

## TryBooking—West Kent Federation Information

Joining a West Kent Federation Event via TryBooking you will need to click on the link provided to you (via West Kent News, or on our Events tab on our website

<https://west-kent.thewi.org.uk/activities>), this will take you to the booking tab, with details of the event, you will need to select 'Book Now' to start your booking. Please note some events might be set to public, which means you won't need a link for getting a ticket, search the name of event.

- This will take you to the next page to add the number of tickets you require, once complete click 'Next'.
- You will be taken to a page for you to fill in your details (if it is a paid event, you will need your bank card and fill in the required details). Tick to confirm you understand the Terms and Conditions, and then confirm booking.

You will receive a successful transaction page and a confirmation email, please keep hold of this email as this will have details for your event. If it is a paid event you will also get a ticket as well. \*

\*Please bear with us while using this platform, we are also learning this new platform. But if you do have any queries, please free to get in touch via email [fedsec@wkfwi.org.uk](mailto:fedsec@wkfwi.org.uk) or telephone 01892 823813.

### ***EAST PECKHAM WI***

**PERFECT PICNIC WEATHER, PIMMS, LOVELY COMPANY AND A GOOD OLD SING-SONG – WHAT MORE COULD WE WANT?**



A glass of Pimms or Fruit Cup welcomed everyone to our outdoor August picnic in the sun. Sheena from "The Tuneless Choir" in Tonbridge led us through those perennial favourites – *Downtown*, *Show Me The*



*Way to Amarillo*, *I would Walk 500 Miles*, *Making Your Mind Up*, as well as songs from shows *Consider Yourself One of Us*, and countless others, finishing with the much loved "*Bring Me Sunshine*". Tea and biscuits were served and suddenly our wonderful afternoon had come to an end.



### **FEDERATION NOTICE BOARD**

**Reminder:** September is MCS month. Please keep your MCS up to date.

#### **YEAR BOOK**

Page 27: From September **Corbett WI** have a change of venue to Bellingham Bowling Club, 183 Bellingham Road, London SE6 1EQ. All other details remain the same.

Page 36: **Hadlow WI** also have a change of venue to Hadlow Village Hall, Marshall Gardens, Hadlow TN11 0HQ. All other details remain the same.

Page 68: **Tenterden Glebe WI** have changed their meeting time to **2.00pm**. All other details remain the same.



## OBITUARIES

It is with deepest regret that **Rowhill WI** announce the death of **VERONICA FREELAND** who passed away after a short illness on 9 July 2021. Veronica was a current member of the Committee and will be greatly missed by all, especially her co-committee members. She arranged so many wonderful theatre trips and frequently organised the items for the Christmas Hamper raffles and many other events. Our thoughts are with her husband Clive and her family at this very sad time.

**Ladycroft WI** is deeply saddened to announce the death in July of **BARBARA THOMPSON**. Barbara became a member in 1986 and remained active in all aspects of WI activities, including still being on the committee, right up until her death following a short illness. She served terms as President and held different positions on the committee. She was particularly adept in all forms of crafts and countless members have been on the receiving end of her many kindnesses. She will be sorely missed by us all.

**Iden Green & Benenden WI** sadly lost a stalwart member of their WI in July.

**SHIRLEY GOOSEMAN** was a treasured friend and energetic member of our WI who tirelessly worked to raise money for the NHS during the pandemic. She instigated and organised the publication of a community poetry book entitled 'Rhymes for a Reason' which was very popular. Shirley also raised a great deal of money for Cancer Research following the death of her daughter, Mandy. She was a prolific poet herself and also wrote children's books. She loved dogs and said she never felt lonely because she was blessed with her new puppy Rudi and ability to write about any situation. She will be greatly missed.

**Royal Eltham WI** is sad to announce the unexpected sudden death of **JEAN BAILEY** who passed away at the end of June after a fall at her home and then admission to hospital. Jean was a delightful friendly lady who loved her day trips out with the WI especially to a garden. She will be much missed by us all.

**ANN BURTON** was our Performing Arts representative for a number of years, arranging theatre outings, stage productions and poetry sessions.

**Farnborough WI** gave her the title of our Poet Laureate as she wrote a poem for every occasion. She even read one of our poems at a Federation ACM held at Tunbridge Wells

Ann joined Farnborough WI in April 2002 and was an active committee member. She will be greatly missed by all our members.

## CONGRATULATIONS

**North Tonbridge WI** sends congratulations and best wishes to **KEN and VAL PARFITT** who celebrated their Diamond Wedding Anniversary in August.

Also sends congratulations and best wishes to **JOHN and MERLE CURTIS** who will be celebrating their Diamond Wedding Anniversary in September.

**South Park WI** sends best wishes to **GILLIE and DEREK TAYLOR** on their recent 65th wedding anniversary. Gillie had been a longstanding member of Leeds WI and more recently a member of Hollingbourne before joining us at South Park. We wish them well for their future years together.



## WHO TO CONTACT

### CHAIRMAN:

Mrs Jane Backshall

Email: [chair@wkfwi.org.uk](mailto:chair@wkfwi.org.uk)

### FEDERATION TREASURER:

Mrs Gillian Neville

Email: [treasurer@wkfwi.org.uk](mailto:treasurer@wkfwi.org.uk)

### CHAIRMAN OF WI

#### ADVISERS:

Mrs Carol Gupwell

Tel No: 01622 676600

Email:

[carolagupwell156@hotmail.com](mailto:carolagupwell156@hotmail.com)

### INDEPENDENT FINANCIAL

#### EXAMINER ADMINISTRATOR:

Mrs Elizabeth Patterson

Tel No: 0208 777 5640

### RESOLUTION COORDINATOR:

Mrs Annette Smith

Email: [kimbersmith127@gmail.com](mailto:kimbersmith127@gmail.com)

### ACWW:

Mrs Tricia Ashdown

Tel No: 01622 737175

### KENT VOLUNTARY

#### EMERGENCY GROUP:

Diane Daniels

Tel No: 01622 674494

Jill Fissenden

Tel No: 01622 758251

### WEST KENT NEWS:

#### EDITORS

Mrs Linda Wills

Tel No: 01474 834163

Mrs Janet Buller

Tel No: 01795 471713

Mrs Rita King

Tel No: 07931 502312

### ARTICLES—YOUR EVENT

Articles, your events Please no more than 150 words and two photographs. Congratulations and Obituaries (no more than 40 words) If possible email direct to [westkentnews@wkfwi.org.uk](mailto:westkentnews@wkfwi.org.uk) If not please post to our Ethel Hunt Lodge address see top of page two.