



# WEST KENT WI NEWS

November 2022



## VIEW FROM THE CHAIR



It is said that as you get older the months seem to pass more quickly and I'm certainly feeling that this year! Here we are November already, nights drawing in and the question – 'what do you want for Christmas', is already being spoken of in our family! I hope you have booked up for your Christmas workshops and Zoom in preparation!!

I know many WIs hold their own Christmas events in December both individually and as a Group but don't forget your Federation family!

Federation Carols at All Saints, Maidstone is a great way to kick start the Christmas month and this year we are joined by our own Federation choir! I have joined the choir (the Orpington branch!) and I had forgotten how great singing with others is. I'm looking forward to joining up with the Southborough branch for All Saints! As well as carols, poems and readings there will also be an opportunity to see what the different Federation sub committees do plus see how you might get involved!

I have also been out and about along with my other Trustees and always enjoy meeting up with members. Some of us were invited to the Nasir Mosque in Gillingham to celebrate the Centenary of the Ahmadiyya Muslim Women's Association. We all had a wonderful time and were made very welcome.

So, snuggle up with a mug of something warming and read all about the amazing things happening in our Federation and don't forget to make a note of the events you want to take part in and let your WI know!!

Take care,

*Amanda Breach*

## Treasurer's Corner



I recently reviewed the accounts sent in by WIs and was alarmed at how many required further investigation. This was also highlighted at a recent IFE (Independent Financial Examiner) meeting.

Whilst the problems were highlighted by our own examiners, many of the errors were by examiners other than our own IFE's.

Problems were as follows:

Arithmetical errors, difference in the figure in A6 and B 1.5, dealing with "Acting as Agent" and some more serious issues.

The following is a gentle reminder:

- Payment of receipts into bank accounts in a timely manner—anything more than a few days and the Federation insurance would be invalidated.
- WI funds must not be used to pay subscriptions.
- All receipts must be paid into a bank and must not be used as cash for payments.
- Make sure that all subscriptions for that financial year are paid to Federation at each quarter and by the year end.
- Petty cash must show in the accounts at the year end.
- There must be supporting evidence for all transactions.

Banks continue to be a common problem and we are investigating these and trying to find the best solutions.

We always try to be of assistance and would urge anyone that is unsure of what to do to contact your Federation IFE, or if you do not have one, contact me on [treasurer@wkwfi.org.uk](mailto:treasurer@wkwfi.org.uk) where I will try to assist you.

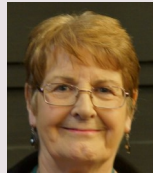
If you are interested in becoming an IFE, then please contact the office and we will forward your details to our IFE co-ordinator.

*Rita King*



**MEET YOUR TRUSTEE,  
60 SECONDS WITH:-**

**Name:** Carol Gupwell



**WI and WI Credentials:** I have been a WI member since moving to Kent in 1974. Past President many times and served on numerous committees including BOT, PA&I and became a WI Adviser in 2016 then Chair of Advisers for the past 5 years. It has been a challenging role but enjoyable and I have met some lovely members during this time.

**Hobbies / Interests:** Numerous hobbies and activities including artistic things like watercolours, crocheting and flower arranging. I love to try new activities like axe throwing and gin tasting.

**Last book read:** Jack Reacher "Personal" by Lee Child. It got me to bed early.

**Favourite film:** 7 Brides for 7 Brothers, The Sound of Music, anything with a feel good factor that you can watch again and again.

**Music choices:** Anything light classical but I do still like Neil Diamond

**Most memorable holiday:** Cruise through Alaska, amazing sights of ice packs etc. Would love the opportunity to do it again.

**What do you love about the WI:** Being amongst like minded women. Enjoying the friendship and support other members provide when times get tough.

**Marmite:** I can take it or leave it but prefer Marmalade on my toast.

**EMMIE SHIPMAN 2023**

The 2023 competition should inspire our poets.

Please compose a POEM this needs to be between 12 to 24 lines.

Subject: **KEEPING FIT**

**A TRIAL OR A TREAT ?**

Please supply two copies, one with just your poem, the other your poem and also have your name, WI and contact details.

You can mail to

Ethel Hunt Lodge

4, Hawkwell Business Centre

Maidstone Road,

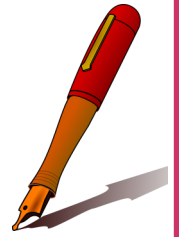
Pembury

TN2 4AG

Or email to FedSec@wkwfi.org.uk

Closing Date End January 2023

Winner to be announced at our WKFWI AGM Monday 27 March. The winner of this competition is, traditionally, presented with, as a prize, a glass paperweight.



**DATES FOR YOUR DIARY**

**NOVEMBER**

Tues	8	Eco Christmas	via Zoom
Tues	8	Christmas Flowers Workshops	Ethel Hunt Lodge
Weds	9	Christmas Flowers Workshops	Snodland
Fri	11	Christmas Flowers Workshops	Hextable
Sat	12	Christmas Flowers Workshops	Orpington

**DECEMBER**

Weds	7	All Saints Church	Maidstone
------	---	-------------------	-----------

**2023**

**MARCH**

Mon	27	<b>Annual General Meeting</b>	Tunbridge Wells
-----	----	-------------------------------	-----------------

**NOVEMBER 2022 FEDERATION NOTICEBOARD**

**List of Speakers 2022**

Page 16: Please note that Ms Judy Anderson no longer wishes to be included as a Speaker.

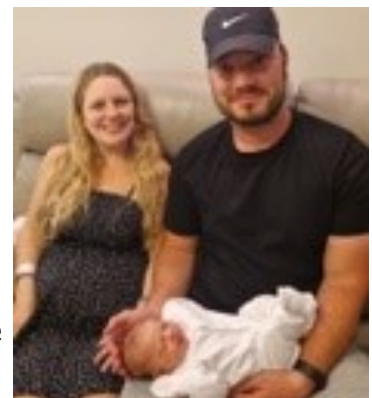
Page 21: Sadly due to ill health, Mrs Jan Parsons has had to withdraw from the List of Speakers.

Page 21: Please note that Mr Steve Roberts has now retired and no longer wishes to be included as a Speaker.



West Kent Federation are pleased to announce the safe arrival of Anneliese Margaret Webb on September 13 to Keeley and Jamie.

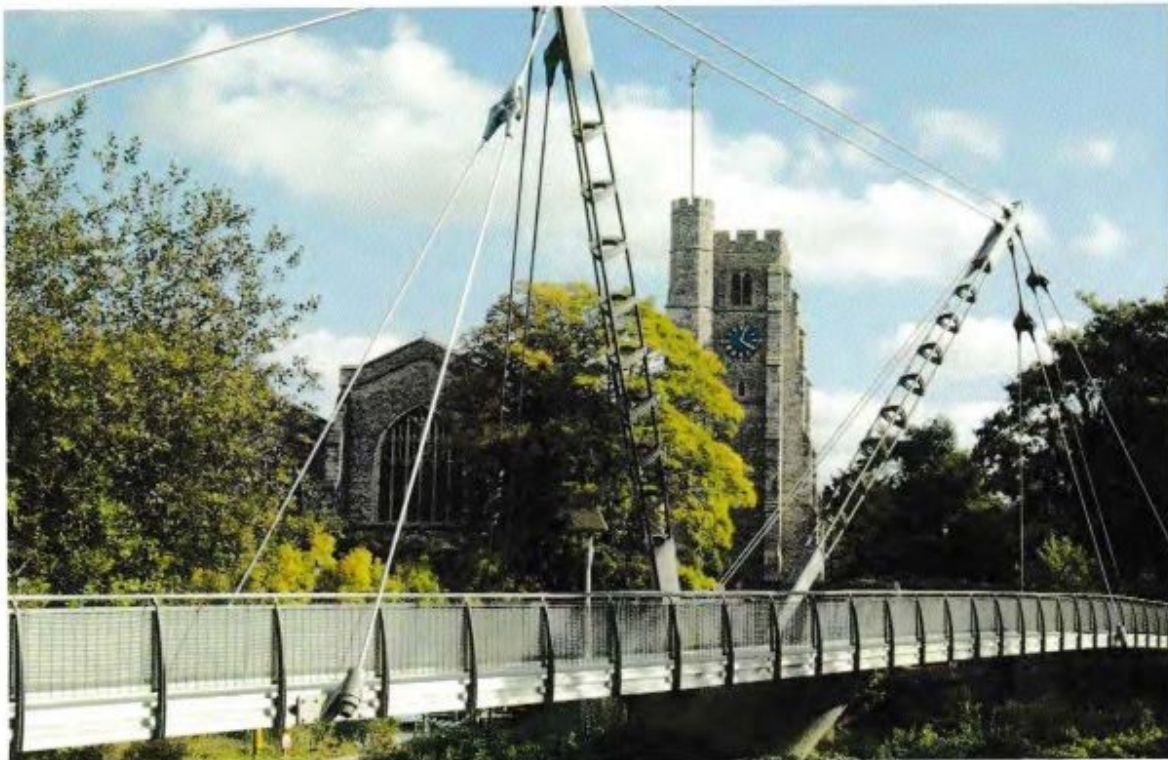
Everyone at West Kent Federation sends their love and best wishes to Keeley, Jamie and Anneliese.



# West Kent Federation Carols at Christmas

## Wednesday 7 December at 2pm

West Kent Federation would like to invite you all to start your Christmas with us at All Saints Church Maidstone for our Carols at Christmas.



Lockmeadow Millennium Bridge, Maidstone

Photograph by Dan Daley

A picturesque walk over the Medway from the car park to All Saints Church

**Ticket price is £5, please email the Federation office at [fedsec@wkwfi.org.uk](mailto:fedsec@wkwfi.org.uk), putting "Tickets for All Saints, Maidstone", in the subject box, stating the number of tickets required and your WI. You will be emailed your ticket/tickets after the closing date and your WI will be invoiced in the normal way. Please note your tickets are non-refundable and non-returnable. Closing Date Thursday 10 November.**

We will be singing your much loved carols and listening to excerpts from some of your favourite Christmas poems and stories. So, once again we need to hear from you! Please let us know if you have a favourite you would like to share with us all and if you are willing to read it yourself.



We are also putting out a call to all WIs, craft groups to bring along a decoration for the pew ends of the church. Last year's pew ends were amazing and a great showcase for the talents of our Federation members. As with last year this can be any media – knitting, crochet, fresh or dried flowers etc. In any form – wreath, hanging etc. but it must be able to hang from the pew end and be an 8 inches diameter ring, please, where possible, use recycled materials.



Items can be dropped into Ethel Hunt Lodge by Friday 11 November with your name, WI and contact details attached. We would also recommend you take a photo of your decoration before you drop it off. Decorations can also be bought along on the day.

Readings and poems can be emailed into the Federation office at [fedsec@wkwfi.org.uk](mailto:fedsec@wkwfi.org.uk). Please state if you are able to read your contribution or if you are happy for someone else to read it. There will be an opportunity to rehearse at the church on the day.

Your WI will be invoiced in the usual way and tickets sent accordingly. We look forward to seeing you at All Saints, Maidstone on Wednesday 7 December at 2pm when our Federation Christmas begins!





## How to have an Eco Christmas with Elaine King

Do you love to make things but feel guilty about all the new materials required and the impact on the environment?

If so do join me for a guide into how to decorate your home, Christmas tree, to wrap those gifts, or dress your table in a way to impress using recycled materials giving it the magical feel you aspire to.

I will show you what things you can use, how waste products, that usually end up in landfill, can be transformed into stunning decorations that everyone will admire for little or no cost at all and with a very low carbon footprint. I will guide you to resources full of tips and tricks and show you examples of inexpensive ways to decorate your home with a low impact on our planet.

So, join me on **November 8** at 7.30pm, charge £5. Secure your place using this link <https://www.trybooking.co.uk/BTTZ>



## Eating for the planet

"I bet that means vegan or vegetarian!" There's a lot more to it than that! The first bit of advice is to eat real food. Surely, everything we eat is real food? Actually a lot of it isn't! It is manufactured from food-like substances, requires lengthy industrial processes resulting in waste products and unnecessary carbon. Your vegan 'tastes like real beef' burger or 'chicken substitute' may well be more harmful to the planet than the real thing! Real food generally has less than 5 ingredients and has been around for decades. So, what's left - fresh fruit, vegetables and some butchered but unprocessed meats plus staples like rice, grains, beans and pulses are generally planet friendly. We also need to consider the source of our food and the story behind it. Has it travelled from the other side of the world? How? Rice shipped in is less damaging than airfreighted avocados! Was it grown somewhere using pesticides that kill bees? Does it contain palm oil/corn syrup? Can I get it locally/

organically? Was it produced ethically? Do I need to eat it out of season? Can I grow it myself? Could I eat less of it? Focus on one change at a time. Look it up!

Avoid exotic oils like coconut which may use high heat, machinery and chemicals in production/refining destroying nutrients and producing carbon and chemical waste. Coconuts don't grow in the UK! In conclusion, pick unprocessed food, mainly plants, in season, locally/ethically produced and not more than you need. Eat more foods that don't require cooking. Slice other foods thinner, cook them faster preserving nutrients and saving power. You'll know you've succeeded when the amount of food packaging in your bin has drastically reduced. Your health and waistline will benefit too!



Gilly Tully

West Kent Federation hosted a Zoom talk by Caroline Arnold, CEO of Bore Place, to mark the Great Big Green Week. Caroline started with a brief history and the creation of the Commonwork Trust by Neil & Jenifer Wates, who bought Bore Place in 1976. The founders' vision was to explore how to live and work sustainably and Bore Place has become a living experiment to demonstrate and share what's possible. The 500 acre organic dairy farm, market garden and ancient woodland is managed with these principles in mind and careful thought is given to all the activities that a working farm has to undertake. Caroline explained it was about making choices, from the heating system which uses a boiler run on wood chip from the farm's own woodland to all the supplies they purchase to run the site and associated activities. The point was also made that we need to go further and regenerate the environment as we've degraded the planet so much, that even if we stopped everything and did no more harm that would not be enough. Conservation is another important aspect with areas of the farm carefully managed and although re-wilding has received much attention, food production and support for rural communities is arguably more important, Bore Place aims to find the balance in the most sustainable ways and share their learnings.

Caroline asked us to reflect on the way we live today. Many of us have lost our connection with the environment and being outdoors with nature can help our mental health as well as our physical wellbeing. Allowing people, especially school children and young adults, to connect back with the land is a huge part of what Bore Place aims to do and they run a number of their programmes to enable this. There are also many opportunities for WI members to also get involved with programmes running at Bore Place, from gardening clubs to craft workshops see <https://www.boreplace.org/whats-on> The talk certainly inspired all those who attended to visit Bore Place which is nestled in beautiful countryside a few miles north west of Tonbridge. It's free to visit anytime so you can reconnect with nature, and whilst you do so, please take a minute to think about what more you can do to help our planet.

# ART AND CRAFT

Paula Bates 01892 327863

artcraft@wkwfi.org.uk

## The Glittering Success of the Art & Craft Annual Days



With around 400 members attending, this year's Art & Craft Annual Days on 28 and 29 September in Ditton were once again the jewel in the crown for the craft-loving members of the West Kent Federation, as demonstrated by the three guest speakers – **Janie Ramsay** on **The Jewels of the Duchess of Windsor**; **'Soldersmith' Alison Le Fevre (Alf)** on how she makes her silver jewellery; and **Textile Artist Wendy Dolan** on **My World of Stitched Textiles**.

Janie Ramsay, who is a member at Chiddingstone WI, was a Director at top auctioneers Sotheby's when they sold the Duchess of Windsor's jewellery collection for record prices. She told the fascinating stories behind some of the stunning pieces, which were often designed by the Duchess herself working with top designers such as Cartier. She was credited for inventing a whole new style of jewellery following the art deco trend. Janie also told intriguing behind-the-scenes tales about the former Wallis Simpson, whose love affair with King Edward VIII led to his abdication and their exile in Paris, and the mysterious growth of the Duchess's jewellery collection thereafter. Additionally, many other famous characters were mentioned in her potted history, from Princess Diana to Madonna!

Alison Le Fevre stepped up on stage next for an eye-opening demonstration of the processes involved in creating her beautiful silver jewellery, a true labour of love. She started with a simple, flat piece of metal and through much hammering and amazing crafting showed how she would transform it into a beautiful silver leaf. See more at: <https://www.thesoldersmith.co.uk>



And Wendy Dolan's textile art was simply extraordinary in its beauty and intricate detail. But it was her tales of creating enormous commissioned artworks such as a stage curtain that truly blew the audience away – each taking months, if not years, of painstaking layering, painting and stitching, techniques also demonstrated in her book on the subject. For those keen to learn try it themselves, Wendy will be holding beginner machine embroidery workshops for the WI in March. Find out more about Wendy at: <https://www.wendydolan.co.uk>



After their presentations, all of the speakers were swamped by members keen to learn more and buy their items for sale, so definitely proved a hit!



Elsewhere in the hall, the members enjoyed browsing and buying from the variety of stalls, among them Rainham Sewing, Woodturning, Ceramics, and beautiful art and craft books from Search Press. The Bring & Buy Stall was as busy as ever with the lovely bargains that were generously donated. Donations to the raffle from stallholders were also much appreciated, including books from Search Press, silver earrings from Alison, cards from Wendy, and striking wood turned and ceramic pieces.

All in all, everyone had a great day connecting with friends from all over the county, and representatives from our neighbour Federations in Surrey, West Sussex, Essex and East Kent.

Sue Roberts from the flower stall will be holding Christmas flower workshops in November, while English Paper Piecing expert Nancy Adamek will be back for Christmas decoration workshops November 2023. Federation Christmas cards were for sale and will also be available at the Carol Concert at All Saints, Maidstone on 7 December.



Sarah Bond, Nevill WI.

The Art and Craft Committee



The ladies of **Highgate Hawkhurst WI Craft Group** presented a beautiful warming blanket to 'Betty' of Dunks Almshouses. The ladies crocheted the brightly coloured blanket during their fortnightly sessions proving that it's not all tea, biscuits and chats (though a fair amount of that occurs too!).

Rachel Fagg



---

# ANNUAL GENERAL MEETING

## THE ASSEMBLY HALL, TUNBRIDGE WELLS

Monday 27 March 2023  
11.00am to 4.00pm (doors open at 10.30am)

Closing date for first release applications: Monday 30 January 2023

---

### SPEAKERS

#### Federation Archivists

The Federation Archivists Sheila Harris and Chris Klempau are looking forward to sharing with you some of the items that are kept at Ethel Hunt Lodge, some of which are over 100 years old! They hope to have a PowerPoint presentation so you will be able to see some of stored items. They will also give you an insight into what the job of an Archivist involves.

#### Rev Kate Bottley

The Reverend Kate Bottley is known to most of us as a TV personality. She is an ordained priest in North Nottinghamshire and is passionate about bringing stories of faith and belief to the widest audience possible.

Kate currently presents Good Morning Sunday on BBC Radio 2 alongside Jason Mohammed and is a regular presenter on Songs of Praise, The One Show, Steph's Packed Lunch, Sunday Morning Live and Sunday Morning Stories. She has appeared as a contributor on Saturday Breakfast with Dermot O'Leary and Pause for Thought on the Zoe Ball Breakfast Show, for which she won a Jerusalem Award.

She is married with two children and has a 10-year-old retired racing greyhound called Buster. Rev Kate loves dancing and "telly" – being a guest on Celebrity Masterchef.

### ENTERTAINMENT

#### West Kent WI Choir

Our West Kent WI Choir will wake you up after lunch singing several songs.

The ladies have been working hard with Choir Master Michael Grant. They practice in two smaller groups, one meets in Southborough, the other in Orpington – together they will astonish.

**DELGATES TICKETS ARE FREE** and will be sent to all WIs automatically. The Delegate WI will be printed on the front of your ticket, **however Delegates are free to sit anywhere in the hall.**

**NON-VOTING MEMBERS TICKETS including Group Co-ordinators and Federation Sub-Committee Members** – Admission will be by ticket only at a cost of **£12.50 per ticket** and WI Secretaries should apply to the Federation Office for these by Monday 30 January 2023. Please base your request for Non-Voting Members tickets on the initial ratio of no more than **one per 10 members** in your WI. There may be a second release after the closing date.

**ADMISSION TO THE MEETING WILL ONLY BE ALLOWED ON PRODUCTION OF A TICKET  
TICKETS ARE SOLD ON A NON-RETURNABLE, NON-REFUNDABLE BASIS**

**NFWI ASSOCIATES** are entitled to apply for one ticket at a cost of **£12.50**. If you would like to attend, please contact the Federation Office.

### COLLECTION

We will be collecting for St Mark's Community Larder in Tunbridge Wells and would be grateful for any non perishable donations. If your WI would like to make up **one** bag of items – a strong bag for life could be used, maximum size 18 x 15 x 8 inches. This is a voluntary collection and WIs can participate if they wish.

### CLOSING DATES

Monday 30 January 2023  
Monday 30 January 2023  
Monday 30 January 2023  
Monday 27 February 2023  
Monday 27 February 2023  
5pm

First release ticket applications need to arrive by post or email by 5pm  
RHS Wisley Draw applications  
Bursary applications  
Receipt of stationery orders to be collected at the AGM  
Second release ticket applications need to arrive by post or email by 5pm

Full details are available via your WI Secretary.

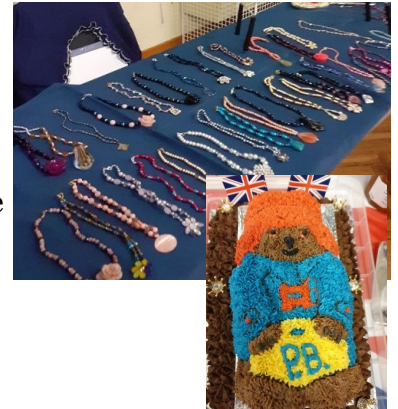


Several members from the Petts Wood Operatic Society came to **Petts Wood Evening WI** September meeting and entertained us with a few show tunes which will feature in their upcoming new show, "Five, Six Seven, Eight". This local operatic group put on a range of very entertaining shows locally every year and they are all of a very high standard and very enjoyable. They finished with God Save the King as a mark of respect to our new monarch and in commemoration of the passing of The Queen and joined with our members in singing Jerusalem which sounded much better than usual!

We were very lucky to have Rose Howell to also visit our meeting to share with us her beautiful hand-made jewellery. Rose talked enthusiastically about her crafting which she started in 2008 as a way to raise funds for St Christopher's Hospice in memory of her mother for whom the Hospice offered care and support. All the pieces are unique, and Rose re-uses old beads as well as new ones, pearls, crystals and shells. She can even fashion pieces to match outfits and suit different clothing neck lines. During lockdown Rose made a range which was based on the rainbow designs which were in recognition of the hard work of the NHS. Rose has raised huge amounts for St Christopher's and has set a new target of £50K that she is working towards which is an astonishing achievement as each item is priced at £10 or less! We were all very impressed with the work and time Rose puts into this and many of us purchased items raising £459 and we were very glad to contribute towards a very worthwhile charity and become owners of a unique and beautiful piece of jewellery.



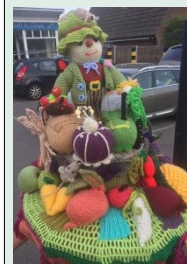
The presentation on the table in honour of our late Queen was impressive, with a photo of the Queen, flags and delicious cup-cakes, a Paddington Bear cake, and 'marmalade sandwiches'! Who will forget the Queen meeting Paddington Bear!



Jackie Hodkinson

### Harvest Celebrations

With a nod to the late Queen Elizabeth II, **St Michael's WI** have been busy with more and more members taking part in the yarn bombing projects.



What an experience. Two of St Michael's WI took a bouquet of garden flowers to Green Park on Monday September 12. Heady scents and a wonderful warm atmosphere.

Pomp, Ceremony and Pageantry. We do it so well. So proud to be British.

Brigitte Watkins (President)



In October, **Kemsing Evening WI** paid a visit to DSI International Ltd in Croydon. I'm sure most of you have never heard of this Company, but this is where most of the costumes for Strictly Come Dancing, Dancing on Ice and many West End and international shows are made. We were warmly welcomed by Carole, their marketing manager, who told us about the 40 year history of the Company's involvement which started with making costumes for professional ballroom dancers. Their work with Strictly started from the first series and their involvement continues now.

Regarding Strictly, they are sent the sketches on a Monday morning with the measurements of the dancers who remain in the competition, their pattern cutter then makes the individual pattern, and each machinist is allocated one costume to make. They have just one man who puts on all the sparkly bits (no sequins ever!) who can put on as many as 15,000 sparkles per costume. We had a really good look at many of the costumes from the last series, and then followed with a tour of the workshops seeing this week's costumes being made plus their huge stock of fabrics, nets and Lycra. The ladies who make the costumes then go the studio on Fridays where the costumes are all fitted and on Saturday the contestants are all sewn into their costumes!

At the end Fran, one of our ladies, was allowed to try on a costume. (Pictured left). It was a fantastic insight into the Saturday Night glamour that is Strictly, and we all really enjoyed our trip, especially seeing on the following Saturday's programme the costumes that we had seen being made. A super day out.

Janet Eaton

President, Kemsing Evening WI



### Coney Hall 'Sponsor September' Event



The ladies of **Coney Hall Village WI** decided to replace their usual sponsored walk this September in aid of the local hospice, St Christopher's, with an event that all their members could take part in. Each member was invited to set their own challenge to be completed in September and to sponsor themselves. These challenges included clearing out the garage or shed, completing that Power of Attorney at long last, learning to hula hoop, walking 8000 steps a day, finishing a knitted jacket/quilt, shredding old paperwork and one lady managed to go without cakes, chocolates and biscuits for the whole month! The good news is that over £200 has been raised and all who finished their challenge should feel proud of themselves.



P

A

L

S

GILL BROWN 01732 850571 [pals@wkfwi.org.uk](mailto:pals@wkfwi.org.uk)

## West Kent WI Choir

The idea for starting a WI choir grew out of the singing days that had been so successful with choir master Michael Grant. We are now up and running having completed our first half term of sessions, 4 at Southborough and 3 at Orpington and we are really enjoying ourselves.

We operate alternate sessions, following the same format at each venue so ladies can always catchup if they miss a session. Our purpose is to give ladies an opportunity to sing, which as we know is very good for our mental health. We are working on singing at the Christmas Carol Celebration but the main reason for us existing is for ladies to come and sing, so it does not matter if you cannot make the performance date its the singing that is important so please come along if you would like to join.

So if you would like to come along to the sessions at either Southborough Civic Centre, TN4 0ND, on 9 or 23 November, 2:00-3:30pm or Orpington Village Hall BR60NN, 2, 16 and 30 November, 1:15-2:45pm, please let the office at Ethel Hunt Lodge know. The charge per session is £7.50.



## WI ADVISERS

Carol Gupwell 01622 676600

### IS THERE A MEMBER OF YOUR WI WHO WOULD LIKE A NEW CHALLENGE ?

We are looking for members who might like to train and join our team of Advisers.

Advisers are trained by NFWI and sit on the Membership committee, which meets 8 times a year.

This is a voluntary position with expenses paid and generally each Adviser looks after a group of WIs

#### What do we do:

We help and support WI committees, help set up new WIs, run workshops on committee work and programme planning. We may have to suspend or enlarge WIs by joining two together when difficulties over forming committees occur. We also run Zoom chat meetings, attend President's meetings and are sometimes invited to a WI social event which is lovely .

If you have been a WI officer or committee member and have a car it is a great way of making new friends. Observers are always welcome to our Team meetings. Please contact the office at EHL [FedSec@wkfwi.org.uk](mailto:FedSec@wkfwi.org.uk).

To help out with a bit more interaction Board of Trustees and Adviser are keen to visit each WI within West Kent especially as we are now more relaxed and getting used to living alongside Covid.

You may be contacted by an Adviser in the coming months who would like to introduce herself and tell you a little about the role and what goes on at Federation level. It will just be a five-to-ten-minute talk with questions and answers. The aim is to foster more understanding between those running the Federation and our WI members.

I do hope you have all had a wonder summer and are now eager to get on with all things WI. Looking forward to seeing you at WI Federation events over the coming months.

Carol Gupwell Chair of Advisers and her Hard-Working Team

## FUN WITH SCIENCE

In the poorer weather of Autumn and Winter when it's not so easy to do outside activities why not hold a Science Workshop in your WI.

We still have copies of the activity booklet produced by the University of Bristol containing easy, fun and interesting experiments to do, all using readily available materials. If you would like some copies please email me at [wendy168@talktalk.net](mailto:wendy168@talktalk.net) and I will post some to you.

Do have fun! Wendy Keast Science rep.



## Update On the Janet Lee WI in Canada.

### Pam Ormiston, Bredhurst WI.

In August 2018 I visited the Erland Lee Museum in Canada where the WI started in 1897 and then began a link with the Janet Lee WI which was the youngest created Institute at that time meeting in the first WI building owned by Erland and Janet Lee, where they lived and which later became the Museum. I wrote an article about this for the West Kent News, during COVID lockdown which some of you may remember, and thought you might like an update.

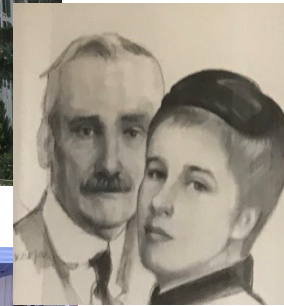
The original Curator of the Museum moved on to pastures new and our link was continued sporadically by a very busy lady who was their President as well as serving as Chair of their local area and President of The Wentworth District.

For a long time we heard nothing at all and we had just decided that we would try for the link a final time when I heard from a lovely lady called Cindie who told us that their former President had sadly passed away and that she was very keen to continue our link.

Well, things have gone from better to amazing and our link is now stronger and full of fun and sharing. Janet Lee WI seem to do everything with pot luck food, which looks very attractive to all of our ladies in Bredhurst. They sadly only have 6 members now but still manage to meet on a monthly basis. Recently the Erland

Lee Museum had a Yard sale for the Ontario Federation, at which our ladies had a stall to finance things for their Institute. We sent them a few handmade cards for their stall but the Customs in Canada were a little lengthy in letting the parcel leave them and it didn't arrive until 2 days after the event! They will use them though to still raise funds for their Institute. Now we are looking at possibly meeting on a Zoom call and doing some craft together, but that is one for the future and very exciting!

The pictures I include are of the Erland Lee Museum, Erland and Janet Lee and the recent Yard Sale on the grounds outside the Museum and Carriage House.



## In October **Headcorn WI** celebrated their centenary



with a wonderful afternoon tea. This was served by the President and her committee.



After the cake cutting, ladies went to the adjacent playing field where they had planted a tree to commemorate the occasion.



The ladies of **Boughton Monchelsea WI** held their annual harvest supper for their October meeting and the tables were adorned with these wonderfully creative scarecrows for our monthly competition. A difficult job for the judges!

Anthea Springett





## **RHS Wisley Draw**

As a Federation we are Associate Members of the RHS which entitles us to 50 tickets for a visit to RHS Wisley. If your WI would like to enter into the draw for these tickets, which will be held at the AGM on Monday 27 March 2023, please complete the entry form. Remember, this is for a ONE group visit of up to 50 people and you are welcome to include members from other WIs to use all the tickets. The tickets will show the 'shelf life of the offer' usually the current year and you will have to arrange your own transport. This would be deemed an educational item and your WI could pay transport costs.

Applications can be submitted either by using this form or by letter or email. Please make sure that all the information requested on the application box is included: WI, Contact Name, Address and Postcode.

West Kent Federation of Women's Institutes

### **WISLEY TICKETS**

Please submit only one WI application – thank you

Yes ..... WI  
would like to be included in the annual draw for tickets to visit RHS Wisley

No transport is included in this offer

Contact Name .....

Address .....

..... Postcode

Apply to: [FedSec@wkwfi.org.uk](mailto:FedSec@wkwfi.org.uk)

or to the Federation Office at Ethel Hunt Lodge clearly marked 'Wisley'

*Closing Date: Monday 30 January 2023*

## **Federation Golf Day 2023**

The Trustees are planning to hold a West Kent Federation Golf Day in the Spring 2023. If any golfers in the Federation are interested in playing in this event, please email your interest to Rita King - [treasurer@wkwfi.org.uk](mailto:treasurer@wkwfi.org.uk)

The venue would be in the Swanley/ Orpington area and would consist of a Stableford competition with prizes for the overall winner, runner up, nearest the pin and longest drives. There would also be a meal and presentation after the event. Open

to all members with a valid handicap.

If successful, it could become an annual event!!



WEST KENT FEDERATION OF WIS

## **2023 Annual Bursary for Education in any subject**

Please submit only one personal application – thank you  
either on this form, email or letter

WI .....

Name .....

Address .....

.....

..... Postcode

Tel No .....

Email .....

Apply online to: Geraldine Martin

Email: [ghoganmartin@gmail.com](mailto:ghoganmartin@gmail.com)

or to the Federation Office at Ethel Hunt Lodge  
clearly marked 'Bursary'

*Closing Date: Monday 30 January 2023*

### **EAST PECKHAM WI CELEBRATE THEIR CENTENARY**

This aerial photograph was taken at our Afternoon Tea in August and we will be celebrating our Centenary on Thursday, 20 October - 100 years to the day since the foundation of the WI in East Peckham - with lunch at the Hadlow Manor Hotel.

Glynis Cheverton

Secretary





## OBITUARIES

It is with great sadness that **Sennocke WI** report the recent death of **THELMA INSOLE**. Thelma was a long standing member of our WI and one of our past Presidents. She will be remembered for her lovely nature, her quiet sense of humour and the way she always found time to support others. Her continued support for our WI over the years was faultless. She will be sadly missed by each and every one of us.

Sadly over the past twelve months **Wateringbury WI** has lost past and present members: **PAULINE WELCH, LINDA GOWER AND IRENE OCKENDEN**. They all played an active roll and will be sadly missed.

The former **Chiddingstone Causeway WI** announce the passing of **JOE TAYLOR** age 95, a long standing active member up to 2019. Much missed by her fellow members, and our thoughts go to her family.



**Highgate Hawkhurst WI** would like to share their congratulations with **PAT AND BERNARD JENNER** and **MARGARET AND DEREK GREGORY** who celebrated their Diamond Wedding Anniversaries in September.

## YOUR WEST KENT NEWS

To enable WIs to receive their ordered copies of the WKN by the first of the month and for it to displayed on the website earlier you may find some of your articles will feature in the following month's edition rather than the next month. All items will follow in the sequence that they are received.

## WHO TO CONTACT

### CHAIR:

Amanda Breach  
Email: [chair@wkwfi.org.uk](mailto:chair@wkwfi.org.uk)  
Tel: 01892 823813

### FEDERATION TREASURER:

Rita King  
Email: [treasurer@wkwfi.org.uk](mailto:treasurer@wkwfi.org.uk)  
01892 354454 Weds or Thurs

### CHAIRMAN OF WI

### ADVISERS:

Mrs Carol Gupwell  
Tel No: 01622 676600

Email: [carolagupwell156@hotmail.com](mailto:carolagupwell156@hotmail.com)

## INDEPENDENT FINANCIAL

### EXAMINER

**ADMINISTRATOR:** Gillian Neville

Email: [gneville@live.co.uk](mailto:gneville@live.co.uk)

### RESOLUTION COORDINATOR:

Caroline Davis Email: [daviscawkf@gmail.com](mailto:daviscawkf@gmail.com)

**ACWW: To be advised**

## KENT VOLUNTARY

### EMERGENCY GROUP:

Diane Daniels  
Tel No: 01622 674494

Jill Fissenden  
Tel No: 01622 758251

### WEST KENT NEWS:

### EDITORS

Mrs Linda Wills  
Tel No: 01474 834163

Mrs Janet Buller  
Tel No: 01795 471713

Mrs Rita King  
Tel No: 01892 354454

## ARTICLES—YOUR EVENT

Articles, your events Please no more than 150 words and two photographs. Congratulations and Obituaries (no more than 40 words) . If possible email direct to [westkentnews@wkwfi.org.uk](mailto:westkentnews@wkwfi.org.uk) If not please post to our Ethel Hunt Lodge address see top of page two.

## Crockenhill WI News



We ran a recruitment and information event at our village Harvest Fayre in September.

We had a great spot for our stall on the village green, the weather was perfect, and we enjoyed a lot of interest. So, we are hoping for even more members to join us soon after an already fantastic year of 13 new members. We provided information on tables and boards advertising what we do as a local WI as well as what the National and the West Kent Federation offer to members too. I provided the local information display and my thanks to both WI Life and the National Federation of WI Public Affairs department for their assistance in supplying their information on what all members can get involved in as a member of the WI.



As it was only two days after the late Queen died. It was proposed that a special table in memory of Her Majesty's 70+ reign and almost 80 years as a WI member be given pride of place at our pitch, which was duly done and received a lot of attention from members of the public. Another eye catcher was a game of skill and steady hand which was made by our President's husband Keith Halls.

