



WEST KENT WI NEWS

April 2025

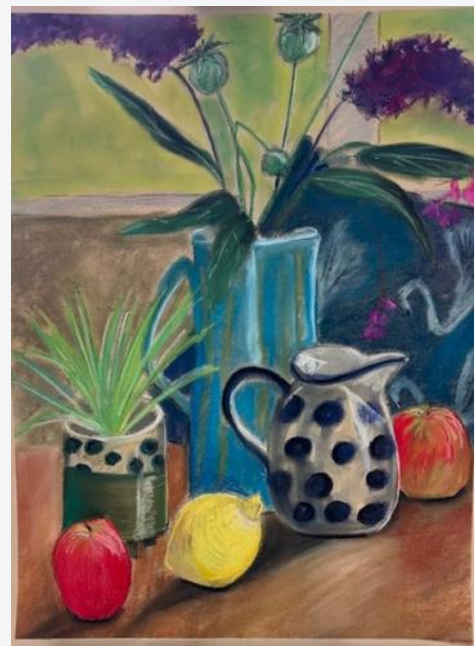
theWI
INSPIRING WOMEN

ART AND CRAFT WORKSHOPS

Invite you to an Introduction to PASTELS

With

KIM LANGFORD



Thursday 19 June, Ethel Hunt Lodge, Pembury, TN2 4AG

Friday 20 June, Townsend Hook Bowls Club, Snodland ME6 5DP

Saturday 21 June, St Nicholas Church Hall, Orpington, BR6 9QB

Full information page nine

VIEW FROM THE CHAIR



As I write this our Federation AGM is just a few days away and I have to admit the tension is rising! I'm one of those people who likes to over prepare so poor Miz and Keeley have had me asking loads of questions and dealt with my anxious moments with great calmness! My mood probably isn't helped by the start of our building work at home – taking down an old extension and ripping out our kitchen! I'm surrounded by builders drilling and knocking things down! So, it was great to get away from it all and help out at an information meeting for a new WI in Beckenham. Bev Wild, Adviser and helpers from other local WIs did a great job of explaining to the meeting the origins of the WI and how it runs. Everyone went home enthused and positive, so fingers crossed!

We are saying goodbye to two Trustees this month and I would like to thank both Geraldine Martin and Paula Bates for all their work on the Board. Luckily, we will not be losing them completely as both will be continuing on their respective sub committees of PA&I and Arts and Crafts. I would now like to welcome two new members of the Board - Val Keeler from Bearsted and Thurnham WI and Amanda Bird from South Park WI with dual at Boughton Monchelsea. Find out more about Amanda and Val in the next month's WKN.

A few days later- I can now report that the AGM went really well, and the feedback has been very positive! Yes, there were a few teething problems with such a big group descending on the Woodville but nothing that spoilt the day. My Chairs address will appear in next months WKN along with a longer report on the day and photos! I'm now resting and already thinking about next year!!

Take Care

Amanda

Treasurer's Corner



Over the last few months, there has been a great deal of controversy with Lloyds Bank and their failure to recognise some WIs who do not have a charity number, as a valid charity. This has meant that accounts have been switched to accounts incurring charges. It has caused a lot of problems with Treasurers who have had to either accept the change and pay the charges or switch bank accounts. As we are aware, in most cases, switching bank accounts has been extremely frustrating and time consuming.

NFWI has had meetings with the banks and negotiated an agreement that Lloyds should recognise those WIs without a Charity Number as being valid charities and are part of the National Federation of WIs.

I have received a draft of the letter that NFWI recommend that West Kent Federation should forward to the WIs affected. This should then be sent to the branch of Lloyds that holds their account. I would also suggest that if the account has been changed then the onus should be on Lloyds to rectify the account and refund any charges incurred.

Should your WI be one of the affected WIs, then please email me the following details and I will send the said letter to the Treasurer, signed by the Federation, to be forwarded to their branch. The details needed are as follows:

1. Name of the WI as it appears on your bank statements
2. The address as it appears on your bank statements
3. Account Number
4. Sort Code
5. The address of the Lloyds Bank Branch where the account is held.

This was also confirmed in the March edition of WI life, page 10.

Our thanks to NFWI for their work in obtaining a resolution.

Kind regards

Rita King

WEST PECKHAM WI Recycle, Repair and Repurpose

At our March meeting we met in eager anticipation of a presentation by our Environment Team. Previously, members had been asked to donate old tee shirts, jewellery, and buttons - why? we asked ourselves. All was revealed when it turned out that this was a test of our creative skills, and armed with materials, needles, thread, pins and scissors, each group was instructed to

make - a Wacky Waistcoat! This was a recycling challenge with a vengeance, but after an hour's cutting and stitching, and concentrated focus, a remarkable array of beautiful garments were produced, to be much admired by all.



The team had put together an information board with lots of facts about reuse, recycle and repurposing and we had to complete a quiz finding all the facts from the board.

We also had an instructive talk from a volunteer at our local Repair Cafe, one of around 4,000 in Europe. She covered the types of repairs done at the Cafe, which is a voluntary service, though donations are welcome. The whole evening highlighted the importance of re-cycling, and dangers of landfill and contamination. Remember, only 1% of garments are repurposed into new clothes. Viv Bennett

DATES FOR YOUR DIARY 2025

APRIL

| | | |
|---------|----------------------|--------------|
| Thur 24 | ACWW Afternoon Tea | Paddock Wood |
| Tues 29 | Women Walk the World | Near you |

MAY

| | | |
|--------|----------------------|-----------|
| Weds 7 | Lifestyle Annual Day | Ditton |
| Sat 31 | Walking Netball | Tonbridge |

JUNE

| | | |
|--------------|--------------------------------|-----------|
| Sat 7—Sun 15 | Big Green Week | Near You |
| Mon 9 | Green Team Walk | Shoreham |
| Mon 16 | Watersports | Mote Park |
| Thur 19 | Introduction to Pastels W/shop | EHL |
| Fri 20 | Introduction to Pastels W/shop | Snodland |
| Sat 21 | Introduction to Pastels W/shop | Orpington |

SEPTEMBER

| | | |
|---------|-------------------------|-----------|
| Mon 8 | Watersports | Mote Park |
| Tues 9 | Broderie Perse Workshop | EHL |
| Thur 11 | Broderie Perse Workshop | Snodland |
| Sat 13 | Broderie Perse Workshop | Orpington |
| Weds 24 | Art & Craft Annual Day | Ditton |

OCTOBER

| | | |
|---------|-----------------------------------|---------------|
| Sat 11 | Auditions Day | Hildenborough |
| Weds 15 | Matthew Palmer Watercolour W/shop | TBA |
| Thur 16 | Matthew Palmer Watercolour W/shop | TBA |
| Fri 17 | Matthew Palmer Watercolour W/shop | TBA |
| Sat 18 | Matthew Palmer Watercolour W/shop | TBA |
| Weds 22 | Lifestyle Annual Day | Ditton |
| Thur 23 | Annual Whist Day | Ryarsh |

HAVE YOU?

Have you a member in your WI that Volunteers for a feature on Social Media to celebrate volunteers week in June?



For International Friendship Day -**Have you** made a friendship within the WI? If so, we would love to hear how this has impacted on your life?

VOLUNTEER



We would also be grateful for your recommendations for a good read, for a feature in a WKN Book Corner for July/August which may even become a monthly feature!



Please email all text, recommendations and any photos to sysadmin@wkwfi.org.uk

Many thanks, Keeley Smart

NFWI Resolution Results 2025 Article for Members

The results are in, this year over 90,000 votes were cast by WI members.

| 2024 - 2025 Resolution | Selection received to date | Percentage |
|-----------------------------------------------|----------------------------|------------|
| 1. Bystanders Can Be Lifesavers | 32,667 | 36.2% |
| 2. Eliminate Landfill of Medication Packaging | 20,844 | 23.1% |
| 3. Join the Repair Revolution | 10,633 | 11.8% |
| 4. Let's Talk about Incontinence | 26,168 | 29.0% |
| Total Selections Received: | 90,312 | |

Therefore, the resolution with the largest number of votes cast was “**Bystanders Can Be Lifesavers**” which had 32,667 member votes and which represents 36.2% of the votes cast out of the four proposed resolutions.

The NFWI Board of Trustees has agreed to put forward the top (one) resolution to the Annual Meeting in June.

The wording of the resolution is as follows:

Bystanders Can be Lifesavers

There are over 30,000 out of hospital cardiac arrests a year in the UK and less than one in ten people survive. Women have a lower chance of surviving than men. Early cardiopulmonary resuscitation (CPR) and defibrillating can more than double the chances of survival. We call on WI members to work together to increase public confidence and training in the delivery of CPR and to work with local organisations to help to improve access to defibrillators in their communities to give every person the best chance of surviving a cardiac arrest.

What happens next?

Members now have the opportunity to learn more about the issue, and to discuss the resolution in their WIs before deciding how their Link delegate should vote at the virtual Annual Meeting.

WIs are encouraged to hold discussion events to allow members to consider how they wish their delegate to vote. The NFWI will also be hosting an online discussion event on April 22 at 12 Noon you can read more (see below) and register online using this link to sign up for the webinar. <https://mywi.thewi.org.uk/public-affairs-and-campaigns/news-and-action/Join-our-Resolution-Webinar-in-April>

How does my WI cast our vote? All WIs get one vote – for or against the resolution.

WIs may choose to give their link delegate discretion to decide how to vote after hearing the speakers and the debate at the Annual Meeting. It is important that you give your delegate your decision in good time before the annual meeting. Please ensure your WI makes it clear to your link delegate whether you are granting her discretion or not.

Federation Representatives and WI link delegates will cast their votes electronically via Electionbuddy during the relevant voting sessions. Further details and how to access the voting links will be shared in the lead up to the event. No votes may be cast before or after the meeting.

It is usual for Link delegates to provide some brief feedback (written or oral) to the WIs they represented following the annual meeting by way of a follow up.

What resources are available to support WI discussions? To support members to get involved the Public Affairs team has produced a range of resources and these are available from <https://mywi.thewi.org.uk/public-affairs-and-campaigns/news-and-actions/resolution-selection-results-announcement> · Detailed briefing on the resolution · PowerPoint presentation on the topic · Quiz to test your knowledge · Frequently Asked Questions (FAQs) document about the resolutions process · Discussion guide with ideas about how to discuss the resolution in your WI

If you have any questions about the Annual Meeting resolution or the resolutions process, please contact the NFWI Public Affairs Department on pa@nfwl.org.uk
Rosemary Tidby and Thushara Kasturiratne Email resolutions@wkwfi.org.uk

WEST KENT FEDERATION POETRY COMPETITION 2025

WINNING ENTRY MOVING ON : The Empty Box - By Susan Roberts from Shirley WI

At nine years old my Dad gave me an empty box, "It's yours to fill" he said
"Why" I asked "and what with?", my voice was full of dread"
"All your favourite toys and books, but the box has got to close";
"I've been posted, we're leaving here, we're moving on, don't worry,
But hurry now and pack your box, that's all that we can carry".



One week on, my box is piled with others in a stack,
Our home is just a house now, there's nothing left to pack.
We're marching out and moving on, we'll stop somewhere on the road
Goodbye to friends, to neighbours, to dogs (and cats, but they don't care)
Our boxes on a truck depart, we'll see them when we're there.

We're on the road, 500 miles to go, we stop at services or picnic in the cold
My arm rest is the important things my mother wants to hold
At last "we're here" said Dad, he's seen the house before
We're marching in, "Is this my room?, it's time to explore
"Will I like it here?", "Are there any dogs next door?"

The truck's arrived outside at last, they drove a decent pace
I've fallen down the stairs again, (they're in a different place)
The kettle's on, there are cups of tea and cake.
Here's my box with all its friends, the house becomes our home
Hello new neighbours, soon to be friends?, hello new life to come



We've been here such a long while, we feel like we belong
Seasons passed, three birthdays too, family have been and gone
We've got the accent and the slang, we've explored the beaches and rocks
But Dad came home again today and gave me an empty box....

CROCKENHILL WI members celebrated our 68th Birthday on 5 March. To make it a very special evening we celebrated with a few bottles of prosecco, with soft drinks on offer too. Plus, a rich fruit iced cake in WI colours also a selection of other cakes for everyone to taste. Our speaker, was Dr Juliette Jensen, who told us about the 'History of Chocolate ' with a chocolate tasting test to complete the talk!
A wonderful evening covering every woman's wish list, ' Chocolate, Cake and Wine!
Cheri Yeates



Lifestyle

Sarah Sudlow and Barbara Bickell Lifestyle@wkfwi.org.uk

LIFESTYLE ANNUAL DAY

WEDNESDAY 7 MAY

Ditton Community Centre ME20 6AH

TICKETS £ 15.00 Doors open 9.30am

We have several stalls for you to peruse. Don't forget your packed lunch, tea and coffee will be available.

Guest Speakers invited to attend feature:



Katherine Hook. Ladies may remember her from last year when she had a stall at our October Day. Katherine will talk to us about gin, sloe gin and chocolate. What's not to like? Katherine has been making award winning sloe gin chocolates for many years. She will also have a stall on the day.

Michelle Ernout, will be talking on "Around the Beehive". Have you ever wondered what goes on inside the hive? Or why bees swarm? Michelle will be answering these questions and more. And talking to us about the importance of bees in the natural world, very important in these changing times.



Mig Kimpton, our third speaker, will be doing some arrangements, which will be part of our raffle, and chatting to us about his life as a florist and all the wonderful arrangements he makes. The testimonials on his website are fabulous. We look forward to welcoming Mig to Ditton.

Members only. Application box on back page. Closing date 23 April

P

A

L

S

GILL BROWN and JEANNETTE SMITH pals@wkwfi.org.uk

WATERSPORTS 2025 - MONDAY 16 JUNE

Mote Park, Mote Avenue, Maidstone, ME15 7SU

Each Session - either Paddle Boarding or Kayak £15



Back by popular request fun and games on the lake at Mote Park. Stuart and his fully trained and insured crew will be on hand to instruct and guide you. The lake is only shallow but buoyancy aids are available for those who wish to borrow them. Please bring a towel and a change of clothing, footwear - closed toed shoes only please.

Please indicate on your application (see back page) your preferred instruction times.

Paddleboard 10.30am - 11.30am or 12 noon - 1pm

Kayak 1.30pm - 2.30pm

Paddleboarding, as kneeling is involved we regret this sport is not advisable for anyone waiting for or who has had knee replacements. Kayaks because of the sitting position, not suitable for those with replacement hips. Kayak if you have a Pilates block or can bring a towel to pad your lower back against the Kayak, it will be more comfortable. You are very welcome to join in with both the Paddleboarding and the Kayaking.

Not up to joining in with the instruction? Why not come along watch the fun or hire one of the pedalos. Photos of the activities please forward to pals@wkwfi.org.uk.

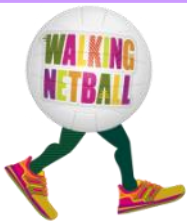
Closing date Wednesday 1 May, there may be spaces after the closing date but we do need to ensure that the size of each session is not too large. Looking forward to seeing regular participants and meeting the 'newbies'.

Cannot make the 16 June? We are repeating Watersports on Monday 8 September – please apply later in the year for that date.

Walking Netball Event

31 May now 11.30am—1pm Tickets £8

Tonbridge School Indoor Sports Centre
London Road, Tonbridge, TN10 3AD



You've heard about walking netball, but have you tried it? Walking netball is suitable for all ages and abilities, it's an opportunity to exercise in a relaxed, fun and supportive way. You do not need to have any netball experience or know any of the rules to participate in this fast-growing sport.

So why not come along and join us for our 2nd Walking Netball. Free car parking and refreshments afterwards included in the price. Please bring a bottle of water to have during the session. Please book your space via your WI rep. See back page. Closing date: 9 May

We look forward to meeting you and possibly a friend or two at our next walking netball event.

Shirley Ellis shirleyellis@yahoo.com

ART AND CRAFT



Paula Bates 01892 327863

artcraft@wkwfi.org.uk

Introduction to PASTELS

With

KIM LANGFORD

Thursday 19 June , Ethel Hunt Lodge, Pembury, TN2 4AG

Friday 20 June , Townsend Hook Bowls Club, Snodland ME6 5DP

Saturday 21 June, St Nicholas Church Hall, Orpington, BR6 9QB

10 am to 3:30 pm, Doors open at 9:30

Please bring a packed lunch and a mug for coffee.

Cost of ticket £ 29. to include a sketch for the main piece of work.

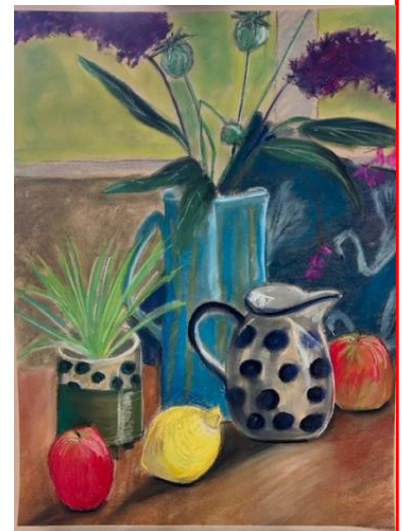
Priority to members. Non-members surcharge £5.



Professional artist Kim will initially demonstrate techniques for using soft pastels to get different effects, letting you have a go with them before moving on to a complete piece of work, a still life.

The tutor will provide you with a copy of the sketch for the main picture.

Please bring the following materials:
Soft pastel selection (set of 12 pack from £6 at Hobbycraft and other art suppliers), two people can share a box of pastels if you are coming with a friend



Paper for exploring the rough trials of the medium, pastel or watercolour paper will suit.

Drawing board, masking tape, a pencil, eraser

Ticket application form on back page.

Closing date: Friday 30 May



Another inspiring craft afternoon at **BOUGHTON MONCHELSEA WI** with Barbara making mosaic doodles - such concentration and great fun! Whatever will we do next?!

Anthea Springett

Show the Love

KESTON WI took part in the “Show the Love” campaign during its February meeting. Members wrote pledges on leaves fixed to hearts showing the ways they hoped to become more environmentally friendly during the next year. The pledges were varied including: “allow an area of lawn to grow”, “recycle all my plastic” and “swap don’t shop!”. Next February we’ll look at the pledges again to see how much we’ve improved. *Judith Gault*



Helen, Judy, Bev, Sue and Sue

TATSFIELD WI 1925 – 2025. 100 YEARS BIRTHDAY

Tatsfield WI in West Kent Federation may be one of the smaller Institutes but it is really big in friendship and support. It has also been at the heart of our village for 100 years and we celebrated our Centenary Birthday in March this year.

We held a party for members and guests, complete with banners, bunting and balloons. Needless to say the afternoon tea and birthday cake were enjoyed by all. Our party was full of laughter and sharing happy memories with good friends.

Many of us have shared the joys, sadness, trials, and celebrations of life for a very long time. Other members have been welcomed into this caring circle in more recent years. Sandra Shury



WEST PECKHAM WI visits FCC energy from waste, recycling plant in Allington

We had an interesting site tour led by engineer Mar. She is passionate about women being trained in this predominantly male sector. She explained how the plant works and how recycling and refuse, are central to the process.

They have a 25-year partnership with KCC & the plant design is integral to ensuring they do not breach their environmental & safety permit.

325,000 tons of processed waste generates up to 263 million kilowatts of electricity. Enough for 60,000 homes.

The ash residue can be used to make bricks, and they are currently looking at using the steam to provide direct heat locally.

So far, they have invested over £150 million, creating 100 permanent jobs.

We gained a better understanding of how such facilities are helping solve the problem of waste and felt a renewed commitment to sorting our own domestic rubbish! *The Environmental Team*



WATERINGBURY WI enjoyed a fun evening

trying to dress each other in metres of Sari fabric. There are lots of folds and tucking of fabric all held together by luck and tradition. Sam brought along some lovely bangles and bindis and told us about the tradition of their wedding jewellery. During our break we enjoyed home-made samosas, mango chutney and poppadoms. Sharon Goshawk



FRITTENDEN WI recently enjoyed a WOBBLE WITH MARIA evening.



The exercises were gentle and carried out in our seats. However, we did find muscles we didn't know existed! Great fun and a good gentle workout.



Green Team

greenteam@wkwfi.org.uk

GREEN TEAM WALK 9 JUNE AT SHOREHAM

I am lucky enough to own a dog, whilst walking with her she attracts conversation from other dog walkers and by-passers. It's good to talk.

My walk helps me in so many other ways: here in the spring soaking up vitamin B and reigniting my creativity, enjoying being with nature thus reducing anxiety, depression and stress and releasing endorphins.

If you are without a dog, you can always borrow one! Seriously take a walk with a friend, join a walking group, which is very sociable. Not forgetting this month on 29 April is ACWW (women who walk the world). Your WI may be doing something similar to the Crockenhill WI-having a sponsored guided walk around our village in aid of it.



These are the wellbeing benefits, what about the physical? Walking helps regulate blood pressure and cholesterol, strengthen bones, reduces the risk of some cancers, helps with the quality of sleep and helps with weight loss: these are just a few.

We can all remember that energising feeling during lockdown, walking, and exploring the countryside and nodding to strangers. So please join us 'the Green Team' on 9 June to meet other like-minded WI members to walk and explore part of the Darenth valley around 'Shoreham Village'.

So make a date in your diary, **Green Team walk: Monday 9 June meet outside Shoreham Railway station at 10.30am.** All

abilities catered for, a gentle walk to Samuel Palmer house or circle walk around the village, or for the more ambitious a division up the steep hill to the Shoreham Chalk Cross. There are a few pubs to eat in or picnic benches if you wish to bring your own lunch. Please register your attendance by emailing us at GreenTeam@wkwfi.org.uk

We look forward to meeting up with you all.

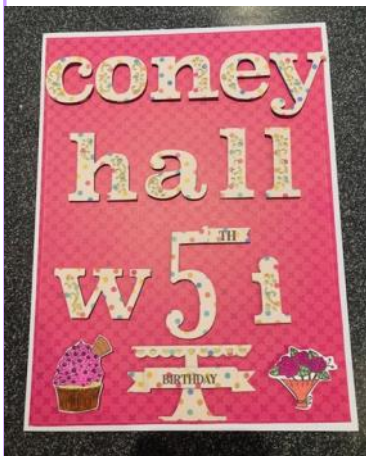
Other useful links www.nhs.uk (walking for health)

<https://www.outwiththedog.co.uk>

www.alltrails.com



CONY HALL VILLAGE WI



At our February meeting the Coney Hall Village WI celebrated its fifth birthday with an amusing talk from the Pharmacist and Poet, Sue Hicks, (highly recommended). We were entertained by her 'Pam Ayres' type poems and learnt an awful lot about the Pharmacist's lot today. As she said, use your Pharmacy, before you lose it!

This was followed by birthday cake, a glass of fizz and tea/coffee. One of our members, Jacqueline Davey, kindly made a birthday card to celebrate the event. We have come a long way in five years, from 13 members, through Covid, and reaching 75 members this year.

Chris Jones

Congratulations!

The members of **Larkfield WI** wish to extend their warmest congratulations and best wishes to **BRENDA AND PATRICK BURROWS** on the occasion of their Diamond Wedding

SOUTHFLEET WI is proud to have taken on the local post-box topper. This is our first effort in time for Easter and we have had a lovely response already from the local community.



OUR BETH—EAST MALLING WI



‘Our Beth’ and ‘Queenie’ were just a couple of the names by which Beth Marsh was affectionately known within our WI.

Beth became Vice President at the rebirth of East Malling WI in 2010 and worked tirelessly behind the scenes to support and enable our WI to run smoothly and flourish. She started the first book club; there are now 6! She performed in our Drama Queens’ productions and embodied the true essence of WI, always there to help, quietly compassionate and in touch with those who needed support. She added the role of Trustee to her responsibilities and was always ready with one of her many famous lists!

Beth embraced life and loved to travel, even setting up a meeting with a member of Lyons Brook WI in Canada which was featured in WI Life in 2019. Within the WI she chaired the Malling District Group and often stewarded at the AGMs in Tunbridge Wells.

When Beth became ill she worked quietly at home to ensure all her records, jobs and lists were passed on. Her workload is now shared by a large committee.

We miss Beth so much for her friendly, fun nature, enthusiasm and beaming smile. Her involvement in life was not just contained within WI; she worked with the GP patient liaison service, was a member of U3A, the local Zumba group and turned out at all hours to marshal long Covid vaccination queues, and so much more.

Beth was loved and respected by so many that her funeral was by invitation only due to the numbers. Members unable to attend lined the road holding WI bunting as her cortege diverted through the village and past our WI hall. She would have been humbled and honoured by this tribute.

Beth died on 1 January 2025 following major surgery in London and sadly complications which could not be overcome.

Barbara Trimmer (NB Obituaries are 40 words please)

THE FARLEIGHS WI

Here at The Farleighs WI we have been welcoming Spring and the warmer weather by decorating our hall with bunny bunting. Under the expert tuition of Annie Thompson and Janice Hayward our craft group have all learned to crochet and are now raring to have a go at other projects...so watch this space!





OBITUARIES

Welling WI sadly announces the passing of **LYNN WIGLEY**.

Lynn had not been in good health for some time but had been well looked after by her husband. Our heartfelt sympathy and condolences are sent to Lynn's husband, family and friends.

It is with great sadness **Tatsfield WI** said goodbye to **ENID GARRARD**.

Enid was an active committee member unashamedly outspoken but also kind and generous, she was certainly a character and will be sadly missed by us all.

Istead Rise WI mourns the passing of their dear friend **STELLA MAULKIN**. A skilled needlewoman, painter, scrabble player and a member of the darts team. Always willing to lend a hand. Unfortunately Alzheimer's arrived and robbed us all of our lovely lady. Kind thoughts to her family at this sad time.



OBITUARIES

The members of **Gates Green WI** were sad to learn that **LILIAN NEWMAN**, had passed away in February,

peacefully and surrounded by her family. A dear friend to many, Lilian had been an active member of our WI since 1990 and, until recently had loved to participate in our outings and activities. She will be greatly missed.

Highgate Hawkhurst WI is sad to announce the passing of two former members **GILLIAN SPURGEON** and **HILARY DELLER**.

Gillian served on the Committee with several of our current members back in 1971 and, as a schoolmistress, was 'quite a character'! She moved to Waterlooville, Portsmouth where she was looked after by her nephew and family.

Hilary (also a teacher) was a very good member of our darts team, and had a lively interest in local history. Since the pandemic, she had suffered poor health but continued to enjoy playing scrabble with friends and neighbours. Our thoughts and condolences are with both families.

WHO TO CONTACT

CHAIR:

Amanda Breach

Email: chair@wkwfi.org.uk

Tel: 01892 823813

FEDERATION TREASURER:

Rita King

Email: treasurer@wkwfi.org.uk

01892 354454 Weds or Thurs

CHAIRMAN OF WI

ADVISERS:

Beverley Wild

Tel No: 020 8289 3533

Email: wiachair@wkwfi.org.uk

INDEPENDENT FINANCIAL EXAMINER

ADMINISTRATOR:

Gillian Neville

Email: gillian.neville@icloud.com

JOINT RESOLUTION

COORDINATORS:

Rosemary Tidby and

Thushara Kasturiratne

Email:

resolutions@wkwfi.org.uk

ACWW: Carol Gupwell

carolagupwell156@hotmail.com

Tel No: 01622 676600

SAFEGUARDING OFFICER:

Jeannette Smith

Email:

safeguardingofficer@wkwfi.org.uk

KENT VOLUNTARY EMERGENCY GROUP:

Diane Daniels

Tel No: 01622 674494

Jill Fissenden

Tel No: 01622 758251

WEST KENT NEWS EDITORS:

Linda Wills

Tel No: 01474 834163

Janet Buller

Tel No: 01795 471713

Rita King

Tel No: 01892 354454

Keeley Smart at EHL

ARTICLES—YOUR EVENT

Articles, your events Please no more than 150 words and two photographs. Congratulations and Obituaries (no more than 40 words) . If possible email direct to **westkentnews@wkwfi.org.uk** If not please post to our Ethel Hunt Lodge address see top of page two.

The change over the last year in ordering tickets for Federation events has proved a success. However, due to the cost and reliability of the postal service, we propose that in 2025, we will accept ticket applications via email only. Tickets, when issued will be emailed to the WI representative in the normal way.

Please only order tickets via your nominated representative.

Should this create a problem, please do not hesitate to contact the office.

Ticket applications via email:

WI Reps Apply to: **tickets@wkwfi.org.uk** with your WI, Contact Name, Telephone number, event name, number of tickets required, date of event, and venue.

*Tickets are non refundable and non returnable. * Places cannot be guaranteed until after the closing date. If an event is over-subscribed a ballot will take place* The Federation is not liable for additional costs or changes to a programme caused by circumstances beyond its control. Please apply for your tickets promptly, if an event is under subscribed by the closing date, the event may be cancelled. If open to non-members please state number required for members and non-members separately. Priority will always be given to members.