



WEST KENT WI NEWS

July 2024



Art & Craft Annual Day

Elaine Gill: Artist and Illustrator



Thursday 26 September

DITTON COMMUNITY CENTRE, ME20 6AH



10:30am to 3:30pm, doors open 9:30am

See Page 4 for details

Becky Cole: All Access Sewing



Dave Brooker: Landscape and travel
photographer



VIEW FROM THE CHAIR



I'm sitting here in the second week of June wondering when summer will arrive! Though having a June birthday, I am reminded of many a rainy party however it doesn't seem all that warm either!

Last week I was lucky enough to attend the NFWI annual meeting at the Royal Albert Hall and what a wonderful occasion it was! Over 3500 WI members all coming together from all across the country – it is quite an event, especially when held at what is thought of as our spiritual home! You can read more about it later in the West Kent News.

If I was asked what makes a gathering such as the NFWI Annual meeting so special, I would have to say it's the coming together of so many WI members- in a much smaller way we do the same at our AGM and the same could also be said of the WI Groups (the old Districts). I know that after the pandemic many Groups did not restart, and I think this is a shame. It's a great opportunity to form links with other WIs in your area and help each other out with events. If you are unsure as to which WIs are in your Group, just send the office an email and I'm sure they will be able to help you and let's see if we can harness that 'feel good' feeling of working together.

So, here's hoping you are sitting in the sun, drink in hand, reading your West Kent News and booking your tickets for all the wonderful events we have coming up later on in the year.

I look forward to seeing you all,

Take care

Amanda

Treasurer's Corner



This month I am suffering from writers block!

I spent a week in Spain at the beginning of June to attend my daughters wedding and then followed a weekend in France to visit the West Kent Zoomers WI President. In between I have tried to fit in all that needs to be done, I think I need another holiday!

We have received the majority of subscription payments from WIs, which by the time you read this article, I will have paid over the NFWI portion.

The busy times for WI Treasurer's should now have quietened down. A hectic time all around and hats off to anyone new to the role.

I am now going to prepare for the Treasurer Training, which will soon come around.

If you haven't sent in your annual returns to the Federation office, please do so asap.

Kind regards

Rita King

Eight ladies attended "Learn to Play Whist" with Sheila Miles as the Tutor on Tuesday 18 June. Everyone enjoyed it and thought it was good fun and looking forward to Whist Day on 31 October at Ryarsh Village Hall.



Are you interested in Art & Craft?

Due to illness, the Federation Art & Craft Committee is in need of new members. If you would like to be involved in finding tutors and arranging workshops in a variety of art and craft media as well as getting speakers for our Annual Days, please get in touch with us. Come to the next committee meeting at Ethel Hunt Lodge on Tuesday 10 September as an observer with no obligation, to see if joining our very friendly team would be suitable for you, or let us know if you would just like to help at events without joining the team.

Contact Paula Bates, Committee chair:
ArtCraft@wkfwi.org.uk

DATES FOR YOUR DIARY 2024

AUGUST

Sat 10 Walking Netball Taster Tonbridge

SEPTEMBER

Mon 16 WI DAY— Arrange your own promotion
Tues 17 Watercolour Workshop Frittenden
Weds 18 Watercolour Workshop Ethel Hunt
Thur 19 Watercolour Workshop Snodland
Fri 20 Watercolour Workshop Hextable
Sat 21 Watercolour Workshop Orpington
Thur 26 Art & Craft Annual Day Ditton

OCTOBER

Sat 12 Auditions Day Orpington
Wed 23 Lifestyle Annual Day Ditton
Thur 31 Whist Day Ryarsh

NOVEMBER

Tues 05 Science Day Sevenoaks

FEDERATION NOTICE BOARD

Year book

Please note that **Deepdene Welling WI** has a new venue and will now be meeting at The 151 Club, 151 Broadway, Bexleyheath DA6 7EZ. All other details remain the same.

PUBLIC AFFAIRS & INTERNATIONAL

Diane Daniels — pai@wkwfi.org.uk

HOW IS SCIENCE AFFECTING OUR EVERYDAY LIVES?

Come to learn and enjoy, it will be an interesting day

Tuesday 5 November 2024

13:00 to 16:00 (doors open 12:30)

Sevenoaks Community Centre, Bat and Ball, Sevenoaks, TN14 5DN

Tickets £12.50

Please book your space via your WI Rep using the application form on the back page.

Closing Date 12 October

We do not often realise how much science plays a part in in our everyday living. This day will give you an insight into several different areas:



You will hear from **KATY LEWIS**, who is a Monitoring Field Team Manager at the Environment Agency. Katy is a fisheries scientist by background and now manages environmental monitoring. Her teams collect samples from rivers, lakes and seas around England. She is going to talk about how the Environment Agency uses molecular techniques in their work. She will discuss examples of how DNA is used to monitor invasive species, to tell how much nutrients are in the rivers and track viruses, like COVID, in the sewage systems.

David Tadd was prior to retirement Head of Forensic Investigation and Operations at New Scotland Yard. He served with the Metropolitan Police for over 40 years, time spent entirely within Forensic Services. In the post of Head of Forensic Investigation he was responsible for an operational unit consisting of a multi disciplined forensic workforce of 950 officers. In this role he undertook the strategic lead for the delivery of the forensic response to the investigation of crime in London.

DAVID BROWN is an Environmental Health Manager part of the Food and Safety Team at Medway Council. They cover all aspects of environmental health regulations for businesses operating within Medway. Their officers visit a full range of business premises to provide a range of interventions including : Conducting food hygiene standards and health and safety inspections. Providing advice to businesses and consumers, taking samples of food and water, investigating complaints and cases of infectious diseases. David also investigates serious work-related accidents.

ART AND CRAFT



Paula Bates 01892 327863

artcraft@wkfwi.org.uk



Art & Craft Annual Day

2024

Thursday 26 September

DITTON COMMUNITY CENTRE, ME20 6AH

10:30am to 3:30pm, doors open 9:30am

SPEAKERS:



Elaine Gill: Artist and Illustrator from Kent, loves drawing buildings in Pen and Watercolour, researching the stories behind them and people/families linked to them. Elaine has worked on commissions for the National Trust and many historic towns, buildings and gardens all over the world, including beautiful maps of stately homes and gardens. She also accepts private commissions telling stories for people's families, and

designs gorgeous cards for places and occasions.



Becky Cole: Becky trained at the London College of Fashion as a Period Pattern Cutter for film, television, and theatre. She worked with costume teams at the BBC on many high profile projects, and with well-known actors. In 2009, she made the decision to move away from the television industry and transfer her sewing and pattern cutting skills to making bespoke wedding gowns and evening wear. In 2018 Rebecca was invited to join the team at Create & Craft TV, sharing her knowledge and expertise with viewers, demonstrating sewing machines, fabrics, and working with brands. A job which she loves and still does today. Becky has written a book called 'All Access Sewing'. Her mission is to make sewing accessible to all, including disabled and neurodivergent people, helping everyone make their wardrobes work for them whatever their challenges.



Dave Brooker: Dave's main interests are landscape and travel photography and creating

audio visual sequences. He has travelled to many places in the world taking stunning pictures including, right, this national award winning photo taken in Ashdown Forest. He will tell us some of the stories behind his pictures and how he planned the shoots, plus some tips on how to

improve our own photographs, even when taken with our phones.



Elaine will have a sales table of her beautiful artwork cards, Dave will sell his stunning photos printed as cards, and Becky will sell her books. There will also be our usual sales stalls from Rainham Sewing, Mary McFadden Ceramics, Lina Patchwork, Love That Stuff Fairtrade, Rao's Crystal Rarities and our well known bring & buy.

Please bring your own mug for coffee and a packed lunch.

Tickets £15. Members only. Application box on back page. Closing date Friday 30 August.



Green Team

greenteam@wkwfi.org.uk

WEST KENT GREEN TEAM



Protecting our planet and pursuing sustainability.

When looking through the inhouse magazine of the “Guys & St Thomas’s Trust” I learned that they have committed to delivering world class healthcare without depleting the world’s resources. They are pursuing a number of initiatives which include:

“Reducing single use plastics” in their hospitals by using china cups across the wards, no longer using throwaway plastic cups. This will save 4 million plastic cups being used & binned each year and will be a 25 ton reduction in plastic waste each year!!

“Waste to wildlife garden” involves using building materials that would have gone to landfill being used instead to create a small colourful mini garden near the hospital entrances. Plants have been chosen that are drought tolerant as well as being hardy & attractive. This garden is an attractive facility that benefits both patients, visitors and staff, as well as reducing materials going to landfill.

They have developed their own “Clean Air Plan” which looks at reducing their contribution to air pollution as well as raising awareness of their staff on keys issues. Their plan includes installing air quality measuring equipment at some hospitals and introducing new e-cargo bikes as alternatives to vehicles emitting harmful fumes, etc.

It is worthwhile looking at some other similar trusts to see what they are doing; to see if there are any valuable lessons to be learned in our own day to day activities. The reuse of waste building materials is a good example and going back to “proper cups & saucers” is another thing to consider.

Shirley Pecover

Pratts Bottom WI & Green Team member

Bearsted & Thurnham WI have signed The Pledge for Plastic Free Bearsted to reduce their use of plastic in their hall. They will also be encouraging their members and hirers to reduce their use of plastic too.



Ladies from **Boughton Monchelsea WI** enjoyed another craft afternoon making Paper Mache bowls. Thanks to Barbara.



South Park WI ladies and their DDay knitted decorations that were made to decorate the pillars at the entrance to the Park for the celebrations.



Amanda Bird



A Murder Mystery Evening

Saturday 1 June 22 of our members and families climbed aboard the Spa Valley Railway train for a murder mystery evening. There had been a murder in the sleepy little Cornish village of Morlington Hill during the 1940s and the Police had drawn a blank on apprehending the villain. Our mission was to sleuth it out and find the murderer over a few drinks and supper on board one of their heritage trains. ‘Annie by Gaslight’ was performed by a regular group of professional actors.

We gathered in the railway shed to see the opening scene, and murder, after which we all boarded the train and enjoyed our fish and chip supper. Whilst we steamed our way through the Kent countryside the performers came along the carriages and gave us more clues and there was much hilarity. We then returned to the railway shed for the big reveal and to find out ‘whodunnit’ after having handed in our cards which detailed who we thought was the murderer and why we came to that conclusion.

There were 14 teams on the train and the results were given in reverse order. All our members did well and the overall winners were from our WI. They were presented with a bottle of Prosecco for their sleuthing efforts.

Viv Bennet

West Peckham WI



P

A

L

S

GILL BROWN and JEANNETTE SMITH pals@wkwfi.org.uk

WALKING NETBALL TASTER SESSION

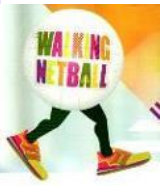
SATURDAY 10 AUGUST

TONBRIDGE SCHOOL INDOOR SPORTS CENTRE

LONDON ROAD, TONBRIDGE TN10 31D

SESSION 10:00 AM—11.30AM TICKETS £8.00

MEMBERS ONLY.



You've heard about walking netball, but have you tried it? Walking netball is suitable for all ages and abilities, it's an opportunity to exercise in a relaxed, fun and supportive way. You do not need to have had any netball experience or know any of the rules to participate in this fast growing sport. Includes free car parking and refreshments afterwards. Please book your space via your WI Rep using the application box on the back page.

We look forward to meeting you and possibly your friend!

Closing Date : Friday 19 July

Back by Popular Demand!

SPEAKER

AUDITIONS

Help Select our Speakers

St Nicholas Church Hall

14 Leamington Avenue, Orpington BR6 9QB

Saturday 12 October 2024

Doors open at 9.30am with the first speaker at 10am and the day will finish at 3pm.

Tickets are £8 and include tea or coffee on arrival and during the lunch break (bring your own cup if you wish)

Please bring a packed lunch.

If you would like to come along, please email

tickets@wkwfi.org.uk with your WI, contact name, email address, telephone number, event, date of event, venue and number of tickets required or complete the ticket application form on the back page

If applying by post your WI will be invoiced on the monthly account for the number of tickets issued and billed £1 for postage.

Please **DO NOT** enclose a stamped addressed envelope.

The closing date for ticket applications is 14 September

Bit of a splash in Mote Park

This Year was our fourth year to run water sports in Mote Park, Unfortunately the weather was not very kind to us as it was very windy and cold with the threat of rain but that did not stop the ladies taking part everyone came prepared for the weather and the chance of getting a bit wet.



The first group battled against the wind which was so strong by the end of the session that paddling back to the landing stage was very tricky, but they made it with a little help from the instructor. Even so they all enjoyed the experience.



The second group went out half an hour later and because of the strength of the wind they stayed in the more sheltered part of the lake, this proved very successful with everybody eventually standing up on their paddle boards, a good opportunity for photos.



Some of the ladies of the second group joined others in the final session which was kayaking. This year we had the choice of single or double



kayaking. Luckily the weather had improved a little, so this group went all around the lake looking very professional paddlers.

Very well done and thank you to all who took part this year, battling against the wonderful June weather that we had! The PALS team look forward to running this event again in the future.

Gill Brown

ART AND CRAFT



Paula Bates 01892 327863

artcraft@wkwfwi.org.uk

WATERCOLOUR PAINTING WORKSHOPS

For beginners and improvers

TUTOR: MATTHEW PALMER

September: Tues 17 Memorial Hall, Frittenden, TN17 2DD

Wed 18 Ethel Hunt Lodge, Pembury, TN2 4AG

Thurs 19 Snodland Bowls Club, ME6 5DP

Fri 20 St Peter's Church, Hextable, BR8 7RH

Sat 21 St Nicholas Church Hall, Orpington, BR6 9QB

10am to 3:30 pm, Doors open at 9:30 - Cost of ticket £ 33.

Kit charge £ 5. in cash to tutor on the day. Members Only.
Bring a packed lunch and a mug for coffee.



Country Garden—Still Life



Beach Hut & Deck Chair



Harvest Mouse

Popular professional artist Matthew Palmer will be returning to teach us more watercolour workshops suitable for beginners to the more experienced improver.

No need to buy any supplies in advance, Matthew will supply a sketch for you and all the paint you need to complete your painting. He will lend boards, palettes and brushes. Please bring a pencil, eraser, water container and kitchen roll. If you have your own painting kit please feel free to bring it. We will need 3 round brushes - a large size 16/18/20, a medium size 10 or 12 and a small size 4 or 6, and a rigger brush might also be useful. Primary colours will be used: red, yellow and blue and all other colours can be mixed from those but bring others if you have them. He will bring his art shop so that you can top up your supplies if you wish.

Ticket application form on back page. Closing date Friday 9 August.



Blue Tits on Feeder



Cottage with Cherry Blossom



Twenty four **Highgate Hawkhurst WI** members enjoyed a sunny day for their visit to All Saints church, Tudeley, near Tonbridge to see the 12 spectacular stained glass Windows designed by Marc Chagall. Our ladies enjoyed a pub lunch afterwards at the nearby Dovecote pub.



Welling WI had a "French Event" which was a resounding success. Ladies wearing berets and striped tops were served a French cuisine by waitresses in long sleeved black tops, black leggings and a white frilly apron: these ladies then morphed into the "ooh la la" dancers, as in the photo, and we were then treated to a never to be repeated version of the can-can. This dance sequence was enjoyed by the troupe and audience and was met with loud cheering and applause. Well done everyone.

Welling not only can-can they Zumba. Why not join us on a Friday. Chris on 07923 469214 is the person to contact for further information. You would be most welcome.



Bexley Village WI enjoyed a very informative talk from Sue Almond and Paul Meeton, both suffered strokes 10 years ago and set up the stroke unit at Queen Mary's hospital called Sidcup Speakability. One of our members volunteers there and asked if we could chose to raise funds which they would use to take their people on a day out, such as flying in a small plane or go sailing. We presented them with a cheque for £1,263.77 raised from a Quiz night and raffles.



Patricia Ladbrook
President

Hadlow Highlights

I arrived at Headcorn airfield to blue skies with a few clouds around, perfect weather for jumping out of a plane! I was soon 'processed', registered, trained and kitted out with goggles and jump suit. It was only then, whilst thinking about all that lay ahead, that I felt a little bit nervous and had 'butterflies' in my stomach! It would soon be my turn to board the plane that would take me up 12,000 feet, which I would then jump out of, albeit strapped to an instructor, falling at 125 mph to begin with, landing safely approximately 10 mins later!



It felt exhilarating free falling with the wind rushing past me, but floating down weightlessly appreciating the amazing views and quietness of the Kent countryside from being so high up felt almost surreal. In no time at all, I was asked to get my legs up ready to land and then we were down!

Shirley Ellis aka Crazy-Super gran



NFWI Annual meeting at the Royal Albert Hall.

It was a bright sunny morning as the ladies from West Kent Federation set off to the Royal Albert Hall, it was a early start but once we were all on the coach we set off to London, unfortunately, what with endless road works and traffic jams we were running a hour late and we missed the singing of Jerusalem, but hey we are WI and we had all sung Jerusalem on the coach.



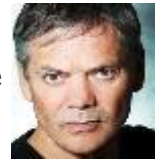
Finally we arrived, found our door number and quietly sneaked in, luckily the first speaker Nazir Afzal OBE had just started his talk on violence against women. What a marvellous insight he gave us to the work he has achieved.

The resolution Dental Health Matters was voted 4578 for and 214 against ,clearly the ladies thought this was a good cause, off we went to lunch, London did not know what had hit them with all this girl power eating sandwiches in the park.



After lunch there was a fantastic talk by spice girl Mel B on her own experience of coercive control and to our surprise, she was interviewed by Victoria Derbyshire. The

actor Timothy Watson who played Rob in the Archers calling for better understanding in the family courts, and teaching children at a early age to respect each other.



Sadly the day came almost to the end but to our joy we sang Jerusalem accompanied by a fantastic organ player. Back on the coach, tired and reflecting on the day, we had a little singalong to show me the way to go home. Many thanks to those who worked so hard to arrange tickets, coach pick ups and making sure we were kept well informed and in the right place.



Christine Basden
Tenterden Glebe.



Left: Ladies of **Crockenhill WI**

Right: Ladies of **Highgate Hawkhurst WI**



Review of Stained Glass Mosaic Workshop

I really enjoyed the stained glass workshop and managed to avoid any cuts too. I made three pieces, one coaster and two plaques . There was a large selection of glass bits in a variety of colours to choose from so it was mainly a case of finding a piece in the right shape and colour. Though we had cutting tools to trim the glass to the desired shape. We created our pieces by gluing glass onto a glass template. It was a workshop anyone could do; no leading involved. I shall be putting my creations on a window so I can see the light through them.



Tonia C Crouch of Keston WI



Due to the popularity of this workshop, we are trying to arrange more days, with priority for those members who missed out on getting tickets.

LIFESTYLE ANNUAL DAY WEDNESDAY 23 OCTOBER Ditton Community Centre ME20 6AH TICKETS £ 15.00 Doors open 9.30am

Guest Speakers invited to attend feature:

Clare Barton who dreamed of starting a tea shop by the sea but ended up opening a bakery, in Tonbridge, and specialising in Sour Dough bread. She has a gluten intolerance but is able to eat small quantities of her own bread and runs workshops to teach people how to make it. Clare tells of the trials and tribulations of getting the bakery started.



Sue Pritchard with “Make Do and Mend”, a popular subject using recycled materials. Sue will be bringing along a patchwork quilt and challenges you to guess what it is made from.

Jo Livingstone, suffers from Prosopagnosia or face blindness. Jo explains what it's like to live with this condition and how it came to be discovered on her. She has had many interesting experiences, appeared on television, even travelling to America to talk about how this affects her everyday life and how she copes with something that most of us will find difficult to imagine.



Members only. Application box on back page. Closing date 7 October

The second Saturday in June is Hollingbourne Village Fête day, and that means the ever popular **Hollingbourne WI Hook-a-Duck** stall is once more set up, ready and waiting for the excited children to have fun. Our theme was Sunflowers. This year there were more children than ever, the loyal, hard working committee and members sharing the manning of the stall for non-stop customers all afternoon. It is lovely to watch the faces of the children as they concentrate on trying to hook the ducks, and every one of them left with either a little prize or a small consolation bag of sweets (parents permission granted). At the end of the afternoon, the lucky winner took home the gorgeous cake made by Penny. Thank you to Mary for the organisation, Mick for filling the 'duck pond' again, and everyone who helped set up the stall.



Barbara Gibbs



Chislehurst WI would like to congratulate **PEARL ORCHARD** on her 100th birthday on 26 July. It's possible she may be the oldest new WI member, having joined for the first time on 8 November 2022 at the age of 98. Pearl is the mother of Chislehurst WI's President, Rosemary Broughton. She still enjoys meetings, playing cards and the odd glass of Baileys!





OBITUARIES

Bearsted & Thurnham are sad to announce the loss of two long-standing members of our WI, **JILL ALSTON and**

HELEN LUMB. Jill was Hall Chair for several years and set-up the reading for the blind of WI Life. Helen was our Membership Secretary for many years as well as undertaking key roles on the WI Committee. They will be greatly missed.

The members at **Larkfield WI** were saddened to hear of the recent passing of **MAGARET ROWE.** Margaret was an active member until failing health meant she had to go into care. Our thoughts and sympathies are with her family.

Fairfield (Dartford) WI are sad to announce the death of **SANDRA WILTSHIRE** who had been a member since 2010. She was a kind, gentle and very supportive member who enjoyed our regular theatre trips and lunches. She will be sadly missed.

OBITUARIES

Members were shocked to learn of the unexpected death of **Jean Parrott,** past President of **Ravenswood WI,** former secretary of Kent Gate District and compiler of the annual quiz for West Kent. A superb craftswoman, talented artist and had a beautiful contralto voice. Jean will be missed for her sense of humour and her smile.

WHO TO CONTACT

CHAIR:

Amanda Breach
Email: chair@wkwfi.org.uk
Tel: 01892 823813

FEDERATION TREASURER:

Rita King
Email: treasurer@wkwfi.org.uk
01892 354454 Weds or Thurs

CHAIRMAN OF WI ADVISERS:

Beverley Wild
Tel No: 020 8289 3533
Email: wiachair@wkwfi.org.uk

INDEPENDENT FINANCIAL EXAMINER ADMINISTRATOR:

Gillian Neville
Email: gneville@live.co.uk

RESOLUTION COORDINATOR:

To be advised

ACWW: Carol Gupwell
carolagupwell156@hotmail.com
Tel No: 01622 676600

SAFEGUARDING OFFICER:

Jeannette Smith
Email: safeguardingofficer@wkwfi.org.uk

KENT VOLUNTARY EMERGENCY GROUP:

Diane Daniels
Tel No: 01622 674494
Jill Fissenden
Tel No: 01622 758251

WEST KENT NEWS: EDITORS

Linda Wills
Tel No: 01474 834163
Janet Buller
Tel No: 01795 471713
Rita King
Tel No: 01892 354454

ARTICLES—YOUR EVENT

Articles, your events Please no more than 150 words and two photographs. Congratulations and Obituaries (no more than 40 words) . If possible email direct to **westkentnews@wkwfi.org.uk** If not please post to our Ethel Hunt Lodge address see top of page two.

Ticket applications via email:

WI Reps Apply to: **tickets@wkwfi.org.uk** with your WI, Contact Name, Telephone number , event name, number of tickets required, date of event, and venue.

*Tickets are non refundable and non returnable. * Places cannot be guaranteed until after the closing date. If an event is over-subscribed a ballot will take place* The Federation is not liable for additional costs or changes to a programme caused by circumstances beyond its control. Please apply for your tickets promptly, if an event is under subscribed by the closing date, the event may be cancelled.

Postal applications, please complete the form below for **each event** and send to:- Ethel Hunt Lodge, 4 Hawkwell Business Centre, Maidstone Road, Pembury Tunbridge Well TN2 4AG. Postal ticket will be charged an extra £1 for postage.

WI.....Name.....

Email.....Tel:.....

Address & Postcode.....

.....No. of tickets req'd.....

Event.....

Date of event..... Venue.....

Your WI will be invoiced on the monthly account for the number of tickets ordered.